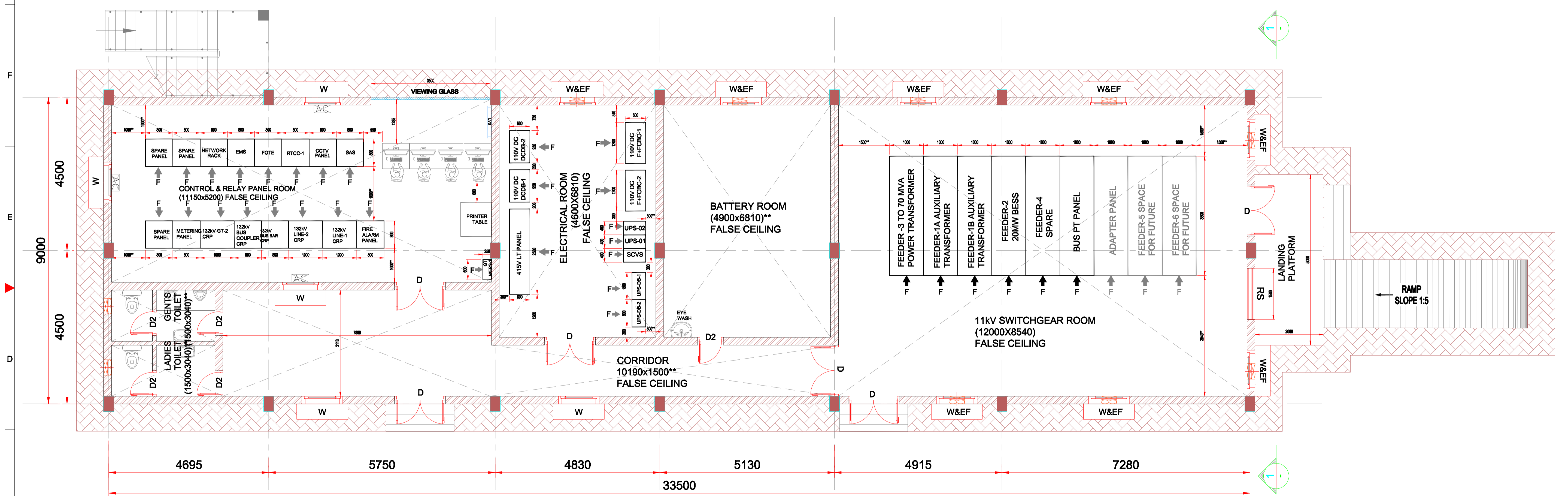
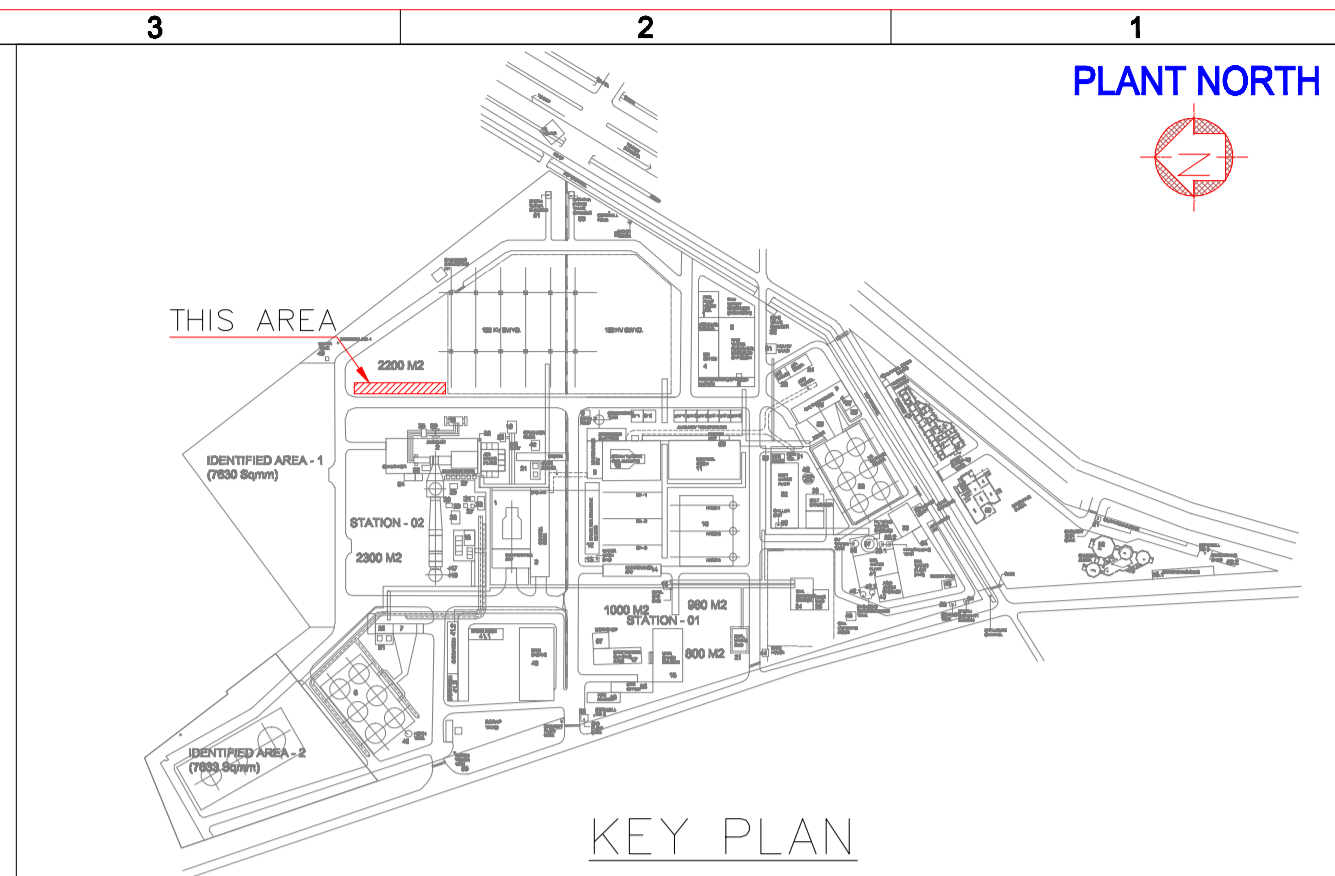


MCR EQUIPMENT LAYOUT



FOR TENDER PURPOSE

ABBREVIATION		ABBREVIATION	
1	EMS ENERGY MANAGEMENT SYSTEM	13	PDB POWER DISTRIBUTION BOARD
2	UPS DB UNINTERRUPTIBLE POWER SUPPLY DISTRIBUTION BOX	14	LDB LIGHT DISTRIBUTION BOARD
3	CRP CONTROL AND RELAY PANEL	15	CCTV CLOSED CIRCUIT TELEVISION
4	UPS UNINTERRUPTIBLE POWER SUPPLY	16	AC AIR CONDITIONER
5	ACDB ALTERNATING CURRENT DISTRIBUTION BOX	17	EF EXHAUST FAN
6	SAS SUBSTATION AUTOMATION SYSTEM	18	D DOOR
7	FOTE FIBER OPTIC TERMINAL EQUIPMENT	19	RS ROLLING SHUTTER
8	NIPPS NITROGEN INJECTION FIRE PREVENTION AND EXTINGUISHING SYSTEM	20	V VENTILATION
9	DCDB DIRECT CURRENT DISTRIBUTION BOX	21	LVS LARGE VISUAL SCREEN
10	F+FCBC FLOAT+FLOAT CLM BOOST CHARGER	22	W WINDOW
11	SCVS SERVO CONTROLLED VOLTAGE STABILIZER	23	F FRONT
12	ELDB EMERGENCY LIGHTING DISTRIBUTION BOARD	24	GT GENERATOR TRANSFORMER
		25	SCADA SUPERVISORY CONTROL AND DATA ACQUISITION
		26	FAP FIRE ALARM PANEL

- NOTES:-**
- ALL DIMENSIONS ARE IN MM, UNLESS OTHERWISE SPECIFIED.
 - ALL PANEL DIMENSIONS ARE TENTATIVE ONLY. FINAL DIMENSIONS SHALL BE UPDATED DURING DETAILED ENGINEERING.
 - THE COLUMN POSITIONS INDICATED ARE TENTATIVE ONLY. FINAL COLUMN POSITIONS SHALL BE AS PER THE CIVIL DRAWING.
 - EXHAUST FAN & AIR CONDITIONER QUANTITY & RATING SHALL BE DECIDED DURING DETAILED ENGINEERING AS PER HVAC CALCULATION.
 - CANOPIES SHALL BE PROVIDED ABOVE EXHAUST FAN OUTS.
 - THE SHOWN MCR LAYOUT IS FOR TENDER PURPOSE ONLY AND THE ROOM DETAILS AS CAPTURED IS TO BE FINALIZED DURING DETAILED ENGINEERING.
 - FOR C&R PANELS, IF ALL EQUIPMENT CANNOT BE ACCOMMODATED IN A SINGLE PANEL, THE SAME SHALL BE ACCOMMODATED IN TWO PANELS.
 - DIMENSIONS OF CLEARANCE INDICATED WITH THE SUFFIX *** SHALL BE CONSIDERED AS MINIMUM REQUIREMENT.
 - THE BATTERY ROOM INTERNAL LAYOUT WILL BE DECIDED DURING DETAILED ENGINEERING.
 - A SPARE PANEL INDICATES PROVISION OF SPACE FOR A FUTURE PANEL INSTALLATION BY THE OWNER.

- LEGENDS:**
- WINDOW
 - EXHAUST FAN
 - BRICK WALL
 - ROLLER SHUTTER (RS)
 - CONCRETE
 - CENTER LINE

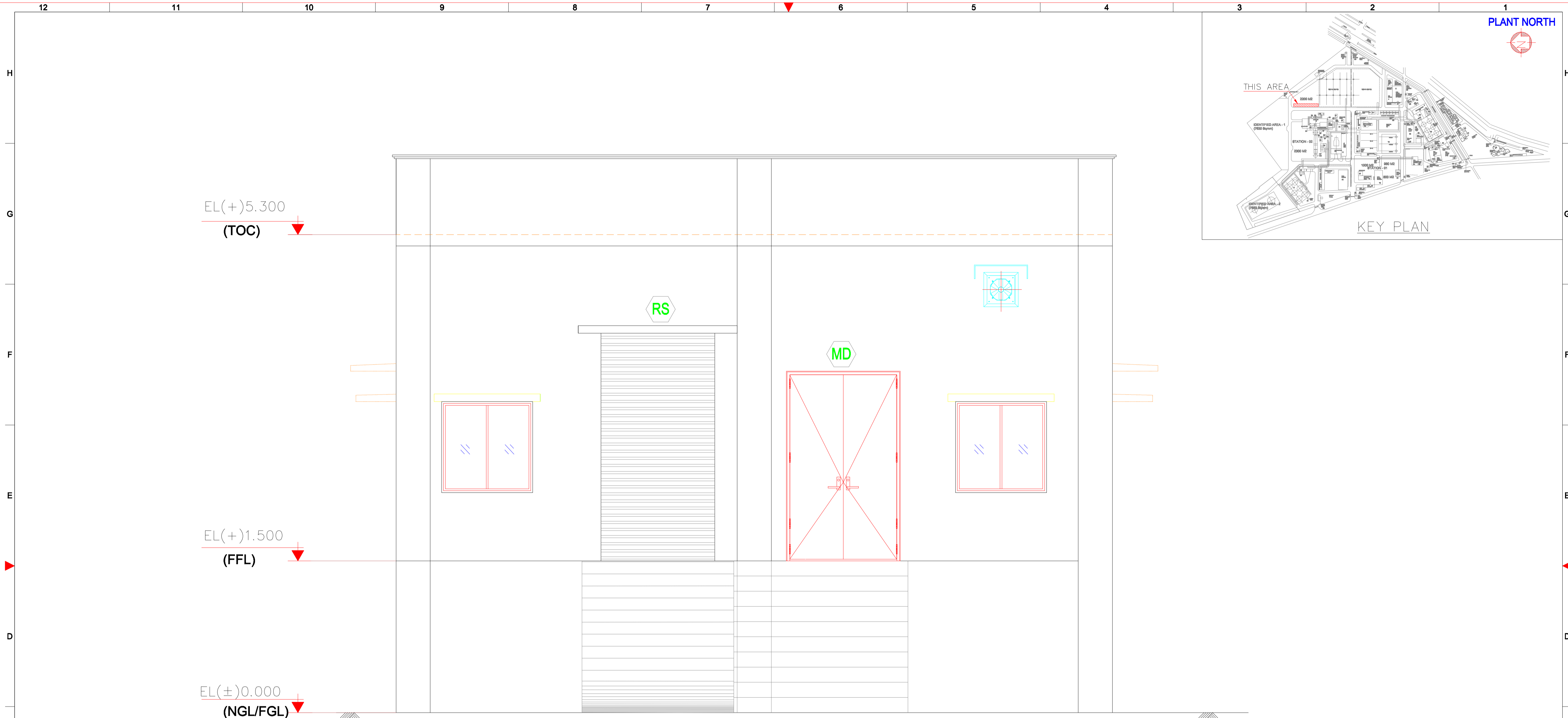
CLIENT: **GUJARAT INDUSTRIES POWER COMPANY LIMITED (M/s GIPCL)**

PROJECT: **DEVELOPMENT OF 20 MW / 20 MWH VFRB PROJECT AT GIPCL VADODARA COMPLEX**

TITLE: **TENDER DRAWING - CONCEPTUAL MCR EQUIPMENT LAYOUT**

DEPT. _____ JOB NO. _____ SCALE: _____ SHEET: 01 OF 02 REV. _____

DWG.NO.: DWG - 04

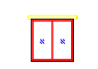




TYPICAL SECTION VIEW

SECTION 1
(SCALE 1:25)

FOR TENDER PURPOSE

- NOTES:-**
1. ALL DIMENSIONS ARE IN MM, UNLESS OTHERWISE SPECIFIED.
 2. THE CABLE TRENCH SECTION SHOWN IS TENTATIVE ONLY.
 3. THE NATURAL GROUND LEVEL(NGL) IS CONSIDERED AS THE FINISHED GROUND LEVEL(FGL).
 4. THE CABLE WILL BE TERMINATED AT 1500MM FROM FGL.
 5. THE FINISHED FLOOR LEVEL(FFL) AND THE HEIGHT OF THE BUILDING SHALL BE FINALIZED DURING DETAILED ENGINEERING WITH RESPECT TO THE OEMs.

- LEGENDS:**
-  - WINDOW
 -  - EXHAUST FAN
 - RS - ROLLING SHUTTER
 - MD - MAIN DOOR

<p>CLIENT:  GUJARAT INDUSTRIES POWER COMPANY LIMITED (M/s GIPCL)</p>			
<p>PROJECT: DEVELOPMENT OF 20 MW /20 MWH VFRB PROJECT AT GIPCL VADODARA COMPLEX</p>			
<p>TITLE: TENDER DRAWING - CONCEPTUAL MCR EQUIPMENT LAYOUT</p>			
DEPT.	JOB NO.	SCALE:	SHEET: 02 OF 02 REV.
<p>DWG.NO.: DWG - 04</p>			