

Gujarat Industries Power Company Limited (GIPCL)

Surat Lignite Power Plant (SLPP)

**At & Post: Nani Naroli, Taluka: Mangrol, District: Surat - 394 110
(Gujarat)**

Phone Nos.: EPABX (02629) 261063 to 261072,

Fax Nos.: (02629) 261112, 261080

Tender Document for:

**Contract for Mechanical execution for Fields Replacements and
Overhauling of remaining ESP Fields during AOHs in Phase-I & II
Boilers (Unit: 1 to 4) at 4 x 125 MW Surat Lignite Power Plant**

Tender Ref. No.: SLPP/MECH/BMD/ESP-FR/2025-26

(n)procure Tender Id: 257130

Contract Period: One (1) year

INDEX

Sr. No.	Particulars	Page No.	
		From	To
(1)	Notice Inviting Tender (NIT)	3	4
(2)	SECTION – A: Instructions to Bidders	5	26
(3)	SECTION– B: Instructions to Bidders for Online e-Tendering	27	28
(4)	SECTION – C: General Conditions of Contract	29	47
(5)	SECTION – D: Special Conditions of Contract	48	80
(6)	SECTION – E: Schedule of Quantities & Price	81	86
(7)	SECTION – F: Annexure and Forms	87	97

NOTE:

All the Bidders shall study entire Tender document carefully & may carry out Plant visit before quoting & submitting their online Bid to understand scope of work and its importance.

NOTICE INVITING TENDER (NIT)

TENDER NO.: SLPP/MECH/BMD/ESP-FR/2025-26

Name of work	Contract for Mechanical execution for Fields Replacements and Overhauling of remaining ESP Fields during AOHs in Phase-I & II Boilers (Unit: 1 to 4) at 4 x 125 MW Surat Lignite Power Plant
Place of work	Surat Lignite Power Plant, Village: Nani Naroli, Taluka: Mangrol, Dist.: Surat- 394 110 (Gujarat).
Quantity	The successful Bidder will be awarded this Contract involving total quantities of various items as mentioned against item descriptions in BOQs.
Contract period	Contract period shall be one (1) year starting from date of Letter of Intent (LoI) / Work Order.
EMD	Rs. 1,02,000/- by RTGS/NEFT/Online mode of payment/Demand Draft (payable at Mosali-Surat/Nani Naroli-Surat/Surat) <u>or</u> Bank Guarantee in favour of GIPCL from approved Banks mentioned in this tender in subsequent clauses.
Cost of Tender Document / Tender Fee	Rs. 2,950/- to be submitted in form of RTGS/NEFT/online mode of payment only.
Availability of online E-Tender document	On (n)procure portal: https://tender.nprocure.com/ On GIPCL's E-Tender portal: http://etender.gipcl.com/ (for viewing and downloading Tender Document)
Last date of online submission of offer	13-01-2026 up to 17:30 hours on (n)procure portal (https://tender.nprocure.com/)
Submission of EMD, Tender fee and other supporting documents for Technical Bid in physical form.	On or before 13-01-2026 up to 17:30 hours at the Office of Surat Lignite Power Plant (SLPP)

NOTES:

1. Amendment / corrigendum of the Tender Document, forms, schedules, etc. may be done any time by the GIPCL during the period of publication of Tender on the website. The Bidders are required to visit the website regularly till the last date & time of Bid submission.
2. GIPCL reserves the right to reject any or all the tenders without assigning any reason thereof.

3. The Bidders are required to quote the rate strictly as per the terms and conditions mentioned in the tender document, adhering to technical specifications as well.
4. The Bidders are required to submit their Bids online only through (n)Procure portal (<https://tender.nprocure.com/>)
5. The EMD, Tender fee & other supporting documents are to be submitted in physical form only at the following address:

Addl. General Manager (O&M) - SLPP

Gujarat Industries Power Company Limited,
Surat Lignite Power Plant,
At Village: Nani Naroli,
Taluka: Mangrol, Dist.: Surat - 394 110, Gujarat.
Phone: (02629) 261063 – 72
E-mail: bggajjar@gipcl.com

SECTION – A

INSTRUCTIONS TO BIDDERS

1. PLANT SYNOPSIS

Gujarat Industries Power Company Limited (GIPCL) (henceforth be named Company/GIPCL), is a Premier Power Utility in the State of Gujarat with an installed capacity of more than 1550 MW comprising of various conventional and renewable projects.

GIPCL commissioned its first power project; a 145 MW gas based combined cycle power plant in 1992 at Vadodara. It expanded its capacity 165 MW Naphtha and gas based Combined Cycle Power Plant at Vadodara in 1997.

Surat Lignite Power Plant (SLPP) with four units of 125 MW capacity each is located at Village: Nani Naroli, Taluka: Mangrol, District: Surat in Gujarat. GIPCL is also operating its own captive Lignite and Lime Stone Mines close to the Power Plant. The Power Plant is based on Circulating Fluidized Bed Combustion (CFBC) technology for the Boilers, where Lignite is burnt along with Lime Stone in the Combustor of the Boiler.

GIPCL commissioned 5 MW solar power station at SLPP in 2012. Also, GIPCL has commissioned 1 MWp Distributed Solar Power Projects at two locations in Gujarat viz. at Village: Amrol, Dist.: Anand and at Village: Vastan, Taluka Mangrol, Dist.: Surat.

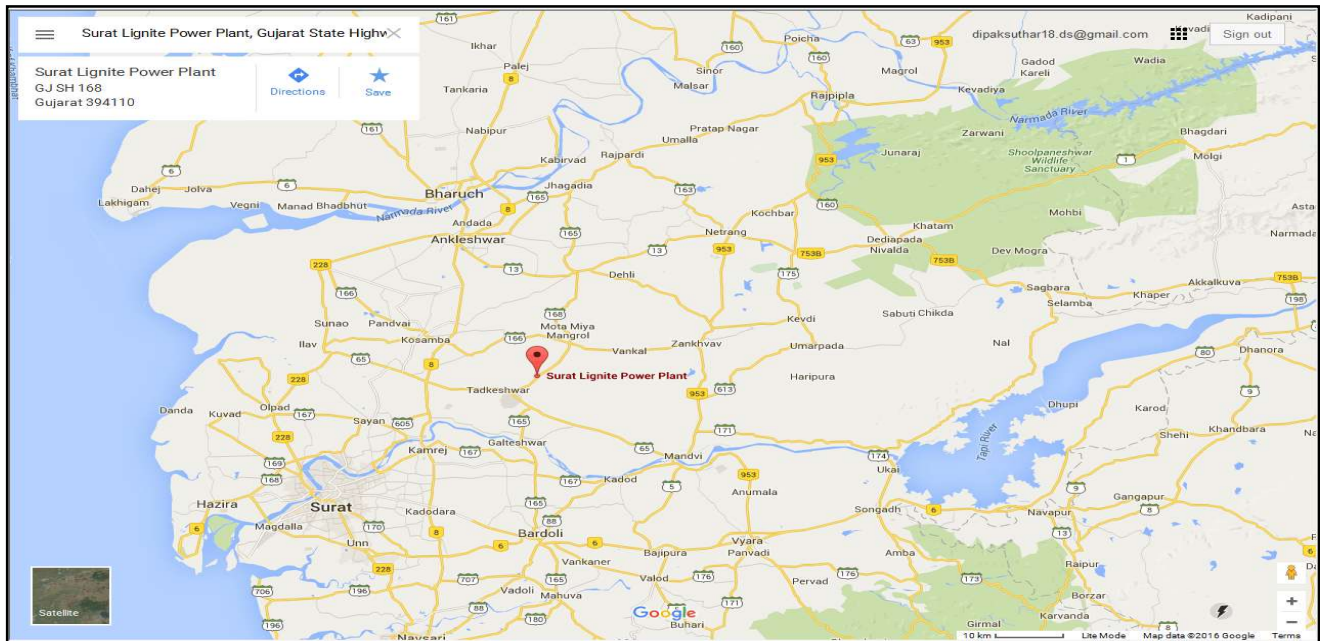
GIPCL has successfully commissioned a 2 x 40 MW Solar Project in 2017 as well as a 75 MW Solar Power Project in 2019 at Gujarat Solar Park, Village Charanka, Dist.: Patan. GIPCL has also successfully commissioned 112.4 MW wind farms at different location of Gujarat. GIPCL has commissioned the 100 MW Solar project at the Raghanesda Solar Park, Banaskantha, Gujarat.

GIPCL is developing 2375 MW Renewable Energy Park at Khavda, Dist: Kutch.

GIPCL is implementing Solar PV Projects of 600 MW + 500 MW (i.e. 1100 MW) and 315 MW part commissioned at the Khavda RE Park. GIPCL has successfully commissioned 75 MW Group Captive Solar Power Plant at Vastan.

Surat Lignite Power Plant (SLPP) is accessible by road from Kim and Kosamba, which are on Mumbai-Ahmadabad highway. From Kosamba, SLPP is around 32 KM, out of which 27 KM is part of the National & State Highway and balance 5 KM is District Road. From Kim, SLPP is around 18 KM, out of which 13 KM is the State Highway and balance 5 KM is District Road.

The nearest Broad-Gauge Railway Line is at Kim, which is around 21 KM from the SLPP. Surat is approximately 50 KM from the SLPP. Location Map for SLPP is as under:



The Company intends to award the contract for Mechanical execution for Fields Replacements and Overhauling of remaining ESP Fields during AOHs in Phase-I & II Boilers (Unit: 1 to 4) at 4 x 125 MW Surat Lignite Power Plant [Contract Period: one (1) year] and is therefore inviting e-Tenders online on (n)Procure portal (<https://tender.nprocure.com/>) from experienced & resourceful Contractors.

2. SCOPE OF WORK

- Detailed scope of work is specified vide Clause No. 1 of Section D: Special Conditions of Contract.
- Brief scope of work is described as follows:

ESP specification for ESPs installed and in operation at Surat Lignite Power Plant (SLPP):

ESP Description	Phase-I: Unit 1 & 2	Phase-II: Unit 3 & 4
Make	BHEL	BHEL
Type of ESP	2xFAA-7x45(45) -126-135-2	2xFAA-7x45(45) - 132-135-2
No of passes	2	2
Number of fields per pass	Seven (7)	Eight (8)
Total No. of fields	14 in each unit, 28 in Phase-1	16 in each unit, 32 in Phase-2

Pitch between Two Collecting Electrode	300 mm (Pitch of some of the fields converted to 400 mm)	400 mm
No of rows for CE	<u>For fields having 300 mm pitch:</u> 43 rows per field, each row comprises of 6 plates <u>For fields where pitch converted to 400 mm:</u> 32 rows per field, each row comprises of 6 plates	34 rows per field, each row comprises of 6 plates
No of rows for EE	<u>For fields having 300 mm pitch:</u> 42 rows per field, each row comprises of 54 electrodes (18 each in 3 tiers) <u>For fields where pitch converted to 400 mm:</u> 31 rows per field, each row comprises of 54 electrodes (18 each in 3 tiers)	33 rows per field, each row comprises of 54 electrodes (18 each in 3 tiers)

➤ **Scope broadly covers the following parts and the same are detailed in Section-D:**

Schedule B1	Mechanical execution of erection and commissioning for field replacement of all working internals with Pitch Conversion and overhauling/repair of balance ESP fields in <u>Phase-1: Unit-1 & 2</u> during annual overhauling (AOH)
Schedule B2	Mechanical execution of erection and commissioning for field replacement of all working internals and overhauling/repair of balance ESP fields in <u>Phase-2: Unit-3 & 4</u> during annual overhauling (AOH)

- **Schedule B1: ESP Fields Replacement with Pitch Conversion & Overhauling in Phase-I ESPs** – It comprises of mainly all the activities to be executed for ESP fields internals replacement along with pitch conversion of Phase-I (i.e. Units-1 & 2) that constitutes dismantling of old/damaged working internals in all respect (up to scrap transportation to its designated scrap-yard), installation of collecting electrodes suspension frames (CESS) & its support arrangement, installation/modification of emitting electrodes suspension frames/bars (EESS) along with vertical support boxes/beams and its associated vertical & diagonal stays, installation of collecting electrodes (plates) & emitting electrodes (springs), installation/repair of the CE & EE rapping mechanisms in all respect, which comprises of shafts, plain bearings, inner arms, outer arms (hammers) etc. and affixing/erection of shock bars, shock pads, shock bar guides etc. and box-up of the inner & outer roofs (including complete welding of roofs) till commissioning of the field i.e. successful field charging after internals replacement. Schedule B1 also includes the overhauling and repairs of the balance ESP fields for the ESP of Phase-I Unit(s) under annual overhauling (AOH).

- **Schedule B2: ESP Fields Replacement & Overhauling in Phase-2 ESPs** – It comprises of mainly all the activities to be executed for ESP fields internals replacement in Phase-II (i.e. Units-3 & 4) that constitutes dismantling of old/damaged working internals in all respect (up to scrap transportation to its designated scrap-yard), repair of collecting electrodes suspension frames (CESS) & its support arrangement, installation/repair of emitting electrodes suspension frames/bars (EESS) along with vertical support boxes/beams and its associated vertical & diagonal stays, installation of collecting electrodes (plates) & emitting electrodes (springs), installation/repair of the CE & EE rapping mechanisms in all respect which comprises of shafts, plain bearings, inner arms, outer arms (hammers) etc. and affixing/erection of shock bars, shock pads, shock bar guides etc. and box-up of the inner & outer roofs (including complete welding of roofs) till commissioning of the field i.e. successful field charging after internals replacement. Schedule B2 also includes the overhauling and repairs of the balance ESP fields for the ESP of Phase-II Unit(s) under annual overhauling (AOH).

- 2.1 The Bid submitted by the Bidder not covering the total scope of work and services as detailed out in the tender document shall be liable for rejection.
- 2.2 Quantum of job mentioned against all items in the Price bid are indicative only & may vary as per site requirement & not to be construed as maximum or guaranteed quantity. The quantities shown in the price bid are approximate quantities for the contract period and they may vary as per job requirements.
- 2.3 All the miscellaneous activities pertaining to specific work to be executed for satisfactory performance is in the scope of Contractor in his quoted rates.
- 2.4 Servicing/ Repairing of above ESP and its' auxiliaries - equipment shall be done as per best practices & checklist provided by GIPCL if required.
- 2.5 The scope also includes all works necessary, which are not specifically mentioned here but required, for effective execution of entire work in all respect within time bound period and are deemed to be included in the scope of the Contractor. All works shall confirm to the specifications, safety norms, legal & statutory requirements.
- 2.6 Permit to work system (including the LOTO system, as applicable) in vogue shall be followed strictly and accordingly, workers of contractor shall start any work only after all the necessary isolations, issuance of PTW and clearance / instructions including daily safety briefing (Tool Box Talk) to the contractual workers.

3. GENERAL INSTRUCTIONS

- 3.1 The Bidders who are interested in participating in the Tender must read and comply with the instructions and the Terms & Conditions contained in the Tender Document.
- 3.2 The Bids shall be filled in by the Bidders clearly, neatly and accurately. Any alteration, erasures or overwriting shall be liable to make the tender invalid unless the same is neatly carried out and attested over the full signature of Bidder. The decision of the

Company to interpret the information and rates filled in by the Bidder shall be final and binding on the Bidder.

- 3.3 The Bidders are requested to make themselves fully conversant with the General Conditions of Contract, Special Conditions of Contract, Technical Specifications, Site conditions, Safety & Health Aspects and Norms to be observed etc. before submitting their bids so that no ambiguity arises in these respects subsequent to submission of the Bids.
- 3.4 Before quoting the rates, the Bidder should go through the specifications, scope of work etc. and get himself fully conversant with them. The Bid should include cost of mobilization and cost to adhere to all Safety Norms as described in the Tender. No relaxation or request for revision of quoted / accepted rates shall be entertained subsequent to the opening of Bid on account of mobilization or Safety costs.
- 3.5 Bidder has to submit all the information as per required Bid document. Failure to furnish all the information as per required Bid documents or submission of a Bid containing deviations from the contractual terms and conditions, specifications and requirements, shall be rejected.
- 3.6 The Bids shall be submitted within the time frames set out in the Notice Inviting Tender ('NIT') and Bids submitted thereafter shall not be accepted and considered.
- 3.7 The Tender Document shall not be transferable.
- 3.8 The Bidders are expected to examine all instructions, forms, terms & specifications in the Bid documents and to get fully acquainted themselves with all the conditions and matters which may affect the subject matter of the work/tender or the cost thereof. If any Bidder finds any discrepancies or omissions in the specifications and documents or any doubt in true meaning or interpretation of any part, he shall seek necessary clarifications in writing if required.
- 3.9 Conditional offers shall not be considered and liable to be rejected.
- 3.10 The Company reserves the right to extend the deadlines for submission of the Bids by giving amendments.
- 3.11 During evaluation of Bids the Company may, at its discretion ask the Bidder(s) for clarification of their Bid. The request for clarification and the response shall be in writing and no change in prices or substance of the Bid shall be sought, offered or permitted.
- 3.12 The Company reserves the right to amend / modify the Bidding documents at any time prior to the deadline for submission of Bids, either at its own discretion or in response to the clarification requested by a prospective Bidder. In such case, the Company may in its discretion extend the deadline for submission of Bids in order to facilitate the prospective Bidders for incorporating the effect of the amendment in their Bids.
- 3.13 The Bidders shall bear all costs and expenses associated with the preparation and submission of their respective Bids, to attend meetings or conferences, if any, including any pre-award discussion with the successful Bidder, technical and other presentations etc. and the Company shall not be liable for any expense thereof.

- 3.14 If the successful Bidder is a joint venture, formed of two or more companies, the Bidder along with the partners shall accept joint and several responsibilities and liabilities for all obligations under the Contract.
- 3.15 Timely and satisfactory completion of the work and strict adherence to the allotted time frames for jobs shall be the essence of the contract.
- 3.16 The Company reserves the right to qualify/disqualify any applicant without assigning any reason.
- 3.17 The Bidder shall be disqualified if any untrue statement or misrepresentation is made in the Bid forms, attachments and other supporting documents submitted by the Bidder.

4. PLANT VISIT

It is perquisite and advisable for all interested bidders to visit the site/plant after downloading the tender copy to understand the actual working conditions, compliance related to labour, safety etc. before submitting their offer. Failing which, any consequential liabilities arising will be to bidder's account. The bidders shall examine the site of works and its surroundings at his own responsibility. The bidders shall collect information that may be necessary for preparing the bid and entering into a contract. All costs and liabilities arising out of the site visit shall be at bidder's account.

The bidder is deemed to have examined and understood the tender document, obtained his own information in all matters whatsoever that might affect the carrying out the works expressly mentioned or works which may have to be carried out to fulfill his contractual obligation within the scheduled rates and to have satisfied himself to the sufficiency for his offer.

The submission of tender by a contractor implies that he has visited the site and read these instructions, conditions of the contract etc. and has himself aware of the scope, nature of works & specifications of the works to be done, General & Special Terms and Condition. GIPCL will not, therefore after acceptance of contractor's rate, pay any extra charges for any other reason in case the contractor is found later on to have misjudged the site conditions.

Any error in description or quantity or omission in the contract document shall not vitiate the contract or release the contractor from executing the work comprised in the contract according to scope of works, magnitude of the works, requirement of materials, equipment, tools & tackles, labour, etc. Contractor has to complete the work in accordance with the contract documents irrespective of any defects, omissions or errors that may be found in the contract documents.

Bidder shall inspect the site, examine and obtain all information required and satisfy himself regarding matters such as access to site, communication, transport, working condition including constraint of work place, confined area, quantum of dusting, running equipment, importance of work, round the clock working conditions, safety requirements, temperature of fresh drained hot bed material and associated risks, right of way, high flood level in River, flow of water during monsoon/dry season in the River/Nullah, the type and number of equipment and facilities required for the satisfactory completion of work, the quantity of various items of the work, the availability of local labour, availability and rates of material, local working conditions, uncertainties of weather, obstructions and hindrances that may arise, etc which may affect the work or cost thereof, before submission of his Bid. Ignorance of site conditions shall not be accepted by the GIPCL as basis for any claim for compensation. The submission of a Bid by the Bidder will be construed as evidence that such an examination was made. Any later claims / disputes in regard to rates quoted shall not be entertained or considered by the GIPCL.

The rates quoted by Bidder shall be based on his own knowledge and judgment of the conditions and hazards involved and shall not be based on any representations of the Engineer.

5. ELIGIBILITY CRITERIA

The following criteria shall be adopted for qualifying the Bidders for further proceeding:

5.1 Bidder should possess minimum **Three (03) years** of experience **out of last seven (07) years** (as per following Clause No. 5.2) in **mechanical execution in BHEL Make ESP or equivalent ESP, connected to boilers of minimum 100 MW power plants or boilers (with minimum 400 TPH capacity) of any other industry for following scope:**

(A) ESP Field internals Replacements **OR** Erection and Commissioning of ESP fields up to successful charging.

AND

(B) Overhauling / Repair of ESP Fields

Bidder shall enclose the proof of the same. Bidder shall submit necessary evidence for the same like attested copies of work orders along with work completion certificates from clients. The work completion certificate shall comprise of order value & executed value. Bidders should have executed the work directly. The work executed as a sub-contractor or subletting agency shall not be taken in to consideration.

Note: For evaluation of the bid, the executed value mentioned in the work completion certificate will be considered.

- 5.2 Bidder should produce evidence of having experience of successfully executed similar works as defined hereunder during **Three (03) years out of last Seven (07) years** ending last day of the month previous to the one in which tender is invited, satisfactory progress of ongoing works etc. secured from clients along with certified copies of documentary evidence preferably photo copies of work experience. The experience should be either of the following:
- a. **One similar completed / executed work each costing not less than the amount equal to Rs. 95.82 Lakh (with GST) OR**
 - b. **Two similar completed / executed works each costing not less than the amount equal to Rs. 63.88 Lakh (with GST) OR**
 - c. **Three similar completed / executed works each costing not less than the amount equal to Rs. 47.91 Lakh (with GST)**

Bidder should specifically mention fulfilling of above criteria in his offer along with details of work orders & work completion certificates issued by clients.

- 5.3 Tender fee: The tender fee shall be accompanied in form of RTGS/NEFT/any other online mode of payment only.
- 5.4 EMD: The EMD shall be accompanied in the form of Demand Draft/RTGS/NEFT/any other online mode of payment or Bank Guarantee issued by banks as described in subsequent Clause no. 7 of this section.
- 5.5 Bidder should have separate Employees Provident Fund code number towards registration of firm with RPF commissioner.
- 5.6 Attested copies of relevant documents duly signed & seal on each & every page shall be submitted. The above documents will be analyzed and after satisfaction, the Price Bid will be open. GIPCL may verify the documents, experience certificates issued by concern authority. After opening of technical Bid, if any required attested documents found missing in the technical Bid submitted by the Bidder, the tender inviting authority may inform to that Bidder only once by E-mail to submit the missing required documents within stipulated time limit. If Bidder/Bidders fail to submit within stipulated time, their Bid will be declared technically disqualified and no further correspondence will be entertained.
- 5.7 Bidder should have minimum average annual turnover of **Rs. 47.91 Lakh** for last three financial years **i.e. FYs 2022-23, 2023-24 & 2024-25**. Bidder shall furnish annual audited financial statement duly certified by Chartered Accountant for the last three financial years to demonstrate the financial healthiness of the company. The balance Sheet must be in the name of the company. Any type of MOU for this purpose will not be entertained.

Note: In case, the annual turnover is less than the statutory guideline which does not require audit, the bidder shall submit the turnover certificate from Chartered Accountant.

- 5.8 The Bidder has to submit Income Tax Permanent Account Number (PAN) and GST Registration No. Copies of the same shall be submitted.
- 5.9 The net worth of the bidder should be positive as evidenced from audited accounts of last financial year **i.e. FY 2024-25**.
- 5.10 In case Bidder is a Consortium/Joint deed of undertaking of company, the above requirements/credential of consortium leader/bidder shall be considered unless otherwise specifically mentioned in the tender.
- 5.11 If Bidder or its Partner(s) or Director(s) is/are/was Black Listed/Deregistered/ Stopped or banned from dealing in the past by any Govt, of Gujarat Undertakings / Depts./ Authorities and Govt. of Gujarat supported companies / undertakings / organizations, bid of that party may be liable to be rejected. Bidder agrees and undertakes to accept decision of GIPCL in this regard as final and binding on the Bidder without any demur and that no further correspondence shall be done in this regard at any stage. Bidder shall have to submit "Declaration for Contractual Litigations" enclosed as Annexure-D in Section-F of this tender document.
- 5.12 Bidder shall have to submit the "Declaration-cum-Undertaking for Compliance of Safety Laws and Regulations" enclosed as Annexure-D in Section-F of this tender document.
 - If any major violation of any safety law(s)/rule(s) is/are found during the preceding three (3) years, bid of that Bidder will be liable to be rejected. Bidder agrees and undertakes to accept decision of GIPCL in this regard as final and binding on the Bidder without any demur and that no further correspondence shall be done in this regard at any stage.
 - If any of the details submitted in the prescribed Annexure / Form to the Bid is/are found to be false, incorrect at any time in future, then the Contract awarded to that Bidder/Contractor shall be liable to be terminated forthwith without any notice/ correspondence and Bidder agrees and undertakes to accept decision of GIPCL in this regards as final and binding on the Bidder without any demur and that no further correspondence shall be done in this regard at any stage. Further, Performance/ Security Deposit will also be liable to be forfeited. Any dues to GIPCL from the Bidder/Contractor shall be recovered from the pending bills or any other dues payable to the Bidder/Contractor, if any or otherwise through any other recourse available under the Laws.

The Bidder shall submit all the evidences, documents, attested copies of work orders & work completion certificates etc. as a proof with EMD & Tender Fee and also provide the requisite details online for meeting the pre-qualification requirements. GIPCL will verify the experience,

performance, capability & strength of Bidders, independently for executing the job. GIPCL may visit the site & consult the owner of the industry/property where similar job is executed by the Bidder. GIPCL reserves the right to accept/cancel/reject any/all Bids without assigning any reason thereof. The tenders of qualified Bidder/Bidders shall only be considered for further evaluation.

Notwithstanding anything stated above, GIPCL reserves the right to verify all statements/information submitted by Bidders to confirm the Bidder's claim on experience and to assess the Bidder's capability and capacity to perform the contract. GIPCL will do performance evaluation and necessary due diligence of the Bidders and reserves the right to reject the bid based on feedback including Owner/user feedback of completed works & ongoing works. GIPCL's decision in this regard shall be final and binding to the Bidder without any demur.

6. LANGUAGE OF BID

The Bid prepared by the Bidder, and all correspondence and documents relating to the Bid exchanged by the Bidder and the Company, shall be written in the English language. Any printed literature furnished by the Bidder, written in another language shall be accompanied by an English translation for the purpose of interpretation of the Bid.

7. EARNEST MONEY DEPOSIT (EMD) and TENDER FEE

- 7.1 An **EMD** of **Rs. 1,02,000/-** and Non-refundable **Tender fee** of **Rs. 2,950/-** shall accompany with Bid. The Tender fee shall be submitted in the form of a RTGS/NEFT/online mode of payment only (account details as specified below).
- 7.2 The EMD shall be submitted in the form of DD/irrevocable Bank Guarantee in favour of Gujarat Industries Power Company Limited from any Schedule Public Sector Bank or Schedule Private Sector Bank such as All Nationalized Banks, Axis Bank, ICICI Bank, HDFC Bank, Kotak Mahindra Bank, IndusInd Bank, Federal Bank, Bandhan Bank, IDBI Bank and Karur Vysya Bank. Proforma of BG enclosed (Annexure-B in Section-F) with this tender.

Alternatively, the EMD also may be submitted through RTGS/NEFT/online mode of payment by Bidders as per the account details provided below:

Bank Name: State Bank of India
Branch: Nani Naroli
IFSC: SBIN0013423
Beneficiary Name: Gujarat Industries Power Company Limited
Account No.: 33514692834

- 7.3 In case EMD is paid in the form of BG, the same shall be valid for a period of 180 days after the due date for submission of the Bid.
- 7.4 The EMD of the successful Bidder will be returned after payment of Security Deposit by successful Bidder.
- 7.5 The EMD will be refunded to the unsuccessful Bidder as soon as the Tender is finalized and after award of Lol / Work Order.
- 7.6 Any bid not accompanied with EMD and Tender fee will be rejected. Tender Fees and EMD should be submitted in physical form directly to GIPCL.
- 7.7 No interest shall be payable on EMD.
- 7.8 The EMD will be forfeited if the Bidder (i) withdraws his Tender after acceptance or (ii) withdraws his Tender before the validity date of the tender.

7.9 SCHEDULE OF EMD & TENDER FEES:

EMD, Tender fee and other documents duly signed to be submitted in physical form on or before due date of closing of tender.	Address for Submission: Addl. General Manager (O&M) - SLPP, Gujarat Industries Power Co. Ltd. - Surat Lignite Power Plant, Village – Nani Naroli, Taluka – Mangrol, District – Surat 394 110, Gujarat. Phone: 02629-261063 (10 lines)
---	--

8. SUBMISSION OF BIDS

A. MODE OF SUBMISSION

The Bids shall be submitted online on (n)Procure portal <https://tender.nprocure.com/> within the dates specified in the NIT along with the details of Tender Fees, EMD in two parts as under:

- (a) Pre-qualification and Techno-commercial Bid without price.
- (b) Price Bid.

(a) Pre-qualification and Techno-commercial Bid without price:

The Tender document duly signed in all pages without price bid along with techno-commercial deviations, if any, shall accompany the Bid. The following information also to be provided in the techno commercial bid:

1. Qualification and Experience of Site In-charge, Supervisors/Engineers.
2. Schedule of deviation (Annexure-E in Section-F) Technical as well as commercial, if any.

The following supporting documents shall also be submitted along with EMD & Tender Fee in physical form:

1. The Tender Document duly signed in all pages without price bid along with Techno-commercial deviations, if any.
2. Proof of experience meeting the minimum Eligibility Criteria as mentioned in this Tender document.
3. Performance certificate issued by clients.
4. Previous Work Order copies.
5. Details of present Work Order (if any).
6. Average annual turnover for the last three financial years i.e. i.e. FYs 2022-23, 2023-24 & 2024-25, audited annual accounts / financial statements i.e. Profit and Loss account and Balance Sheet duly certified by a practising CA will be required.
7. P.F Number and Allotment Letter.
8. PAN Number.
9. GST registration number/certificate.

(b) Price Bid:

1. Price Bid (including 18% GST) shall be submitted **online only** through (n)Procure portal <https://tender.nprocure.com/>.

Note: The estimate includes cost of all manpower, equipments, vehicles, consumables, fuel, tools & tackles, transportation, safety statutory compliance, mobilization etc.

2. Bidder shall have to quote the rates **in the form of percentage (%)** i.e.

AT the Estimated Contract value OR

_____ % BELOW the Estimated Contract value OR

_____ % ABOVE the Estimated Contract value

3. Goods & Service tax shall be paid, at actual, as per prevailing rates as declared by Central Government on submission of documentary evidence.
4. The quantities shown in **Section-E: Schedule of Quantities and Price** are approximate for the contract period and may vary as per job requirement.
5. The Bidder shall fill the Bid documents with utmost care in consonance with the instructions contained in the Bid documents.

B. METHOD OF TENDERING / SIGNATURE ON BIDS

- (i) The Bid must contain the postal address like name, residence and place of business of the person or persons submitting the Bid and must be signed and sealed by the Bidder with his usual signature. The name of all persons signing the documents shall also be typed or printed below the signature on each page.
- (ii) Bid by a joint venture/partnership firm must be furnished with full names of all partners and be signed with the partnership name, followed by the signature and designation of one of the authorized partners or other authorized representative(s). A certified copy of the power of attorney authorizing such partner or representative shall also be submitted.
- (iii) Bids by a Corporation/Company must be signed with the legal name of the Corporation/Company i.e. by the President/Managing Director/Secretary or other person or persons authorized to Bid on behalf of such Corporation/Company. A certified copy of the board resolution/power of attorney authorizing such partner or representative shall also be submitted.
- (iv) The Bidder's name stated on the proposal shall be the exact legal name of the firm.
- (v) Erasures or other changes in the Bid Documents shall be initialed by the person signing the Bid.
- (vi) Bids not conforming to the above requirements of signing shall be disqualified.

9. MODIFICATION AND WITHDRAWAL OF BIDS

- a. The Bidder may modify or withdraw the bid prior to the deadline prescribed for submission of bids.
- b. No Bid shall be modified subsequent to the deadline for submission of Bids.
- c. No Bid shall be withdrawn in the interval between the deadline for submission of Bids and the expiration of the period of bid validity.

10. POLICY FOR BIDS UNDER CONSIDERATION

- a. Bid shall be deemed to be under consideration immediately after opening of the Bid and till official intimation of award / rejection made by the Company to the Bidders.
- b. While the Bids are under consideration, Bidders and / or their representative or other interested parties are advised to refrain from contacting by any means, the Company. The Engineer, if necessary, will obtain clarifications on the Bids by requesting for such information from any or all the Bidders, in writing as may be necessary. The Bidder will not be permitted to change the price or substance of the Bid after the Bid has been opened.

11. EFFECT AND VALIDITY OF THE BID

- a. The Bid should be kept valid for acceptance for a period of one hundred and eighty (180) calendar days from the last date of submission of Bids.
- b. The submission of any Bid along with the required documents and specifications shall constitute an agreement that the Bidder shall have no cause of action or claim, against the Company for rejection of his Bid. The Company shall always be at liberty to reject or accept any Bid or Bids at his sole discretion and any action will not be called into question and the Bidder shall have no claim in that regard against the GIPCL.

12. OPENING OF BIDS

1. GIPCL will open the Pre-qualification / Technical Bid / Price Bid, as the case may be, in presence of Bidder's representatives whenever such a procedure has been specified. Otherwise the tender will be opened by the authorized officers of GIPCL.

2. Preliminary Examination:

12.2.1 The Company will examine the Bids for any computational errors, for sureties furnished by Bidder, for authentication of documents submitted and completeness of the Bids.

12.2.2 Arithmetical errors will be rectified on the following basis:

- (a) If there is a discrepancy between the unit price and the total price that is obtained by multiplying the unit price and quantity, the unit price shall prevail and the total price will be corrected & will be binding to the bidders.
- (b) If there is a discrepancy between the Total Bid Amount and the sum of total prices, the sum of total prices shall prevail and the Total Bid Amount will be corrected & will be binding to the Bidders.

13. EVALUATION & COMPARISON OF BIDS

1. GIPCL shall evaluate the Bids received and accepted by it to ascertain the lowest evaluated Bid in conformity with the specifications of the tender document. **The overall lowest bidder for all the sections of Section-E schedule for quantities & price after considering GST will be treated as L1 bidder post e-reverse auction.**
2. The Technical Bids will be examined for minor matters regarding qualification of bids. Subsequent to correspondence with the respective bidders, the decision of Tender Committee will be final.
3. All responses to requests for clarifications shall be in writing and shall be presented to the Company through e-mail or in a sealed envelope on or before the given date

requested by the Company. If the Technical clarifications sought by the Company do not reach the Company on or before due date, the Bid will be rejected.

4. The comparison of all the Bids shall be carried out with reference to the scope of work as per the technical specification. Any deviation / omission shall be evaluated at highest quoted price of the deviation / omission quoted by any of the Bidder. In case a separate price (for omission) is not given by any other Bidder, a reasonable price of the same shall be taken & the same shall be binding to the Bidders.
5. The commercial deviation, if any, shall be loaded to bring all the Bids at par. The loading shall be carried out at an interest rate of 2% above PLR of SBI.
6. A Bid to be substantially responsive shall be one which on evaluation confirms to all the terms, conditions and specifications of the Bid documents without any material deviation or reservation.
7. For the above referred purpose, a 'material deviation' shall be one:
 - (a) Which affects in any substantial way the Scope, Quality or performance of the Contract, or
 - (b) Which limits in any substantial way and in a manner inconsistent with the Bid documents, GIPCL's right or the Bidder's obligations, under the contract, or
 - (c) Whose rectification of it would affect unfairly the competitive position of other Bidders presenting substantially responsive Bids.

14. RIGHT OF REJECTION OF TENDERS

1. GIPCL reserves the right to accept or reject any Bid or to cancel the Bidding process and reject all Bids at any time prior to award of Contract, without thereby incurring any liability to the affected Bidder or Bidders or any obligation to inform the affected Bidder or Bidders regarding the same.
2. Any Tender without EMD and Tender Fee will be treated as non-responsive and shall be rejected at the outset & no further correspondence shall be entertained regarding this.
3. GIPCL reserves the right to debar any Bidder from participation in future Bids if such Bidder has quoted an abnormally low rate in the Bid document/Price Bid.
4. The bidders worked at GIPCL-SLPP in the past but performance of work not found satisfactory or failed to perform as per scope of work and terms and conditions of work order including delay in mobilization, delay in execution of work, statutory compliance etc. then in such case GIPCL reserves the right to reject the bid and such bidders shall not be allowed to participate in the bidding process. Decision of GIPCL would be final for deciding about poor performance in execution of such past contract.

15. AWARD OF CONTRACT

1. GIPCL will award the Contract to that Bidder whose quotation has been determined to be substantially responsive and evaluated as the lowest quotation post e-reverse auction in conformity with the requirements of the specifications and documents contained herein, provided further that the bidder is determined and evaluated to be qualified to perform the contract satisfactorily.
2. The successful bidder shall be intimated of his selection through the Letter of Intent or Letter of Award/ Work Order which shall be sent to him through registered e-mail, courier or fax.
3. GIPCL reserves the right to cancel/short close the contract during the contract period without assigning any reason.
4. GIPCL reserves the right to split the contract quantity between vendors.

16. CONTRACT PERIOD

- a) The contract will be valid for a period of **Twelve (12) Months** from the date of work order.
- b) GIPCL reserves the right to extend the Contract Period up to **three (3) months** on the same rates and terms and conditions without any price escalation and entering into any new contract.
- c) The said Contract Period can be extended if mutually agreed upon by both the parties up to **twelve (12) Months** and in such a case a revised work order shall be issued at the same rates and terms & condition or at negotiated rates acceptable by both parties i.e. the Company & the Contractor.

17. COMPLETION SCHEDULE:

Schedule for completion of job is as below:

- a) The basic considerations and the essence of the 'contract' shall be the strict adherence to the time schedule for performing the specified 'works'. Contractor has to mobilize required number of manpower along with necessary tools, tackles, PPEs.
- b) Completion schedule for the ESP field internals replacement in respective Units shall be intimated by GIPCL during pre-shutdown meeting depending upon the overall schedule of Unit AOH.
- c) Work shall be completed as per the completion schedule decided as specified above. Actual completion time shall be considered from the date of handing over the front to contractor up to the date of ESP field test charging offered by contractor after completion of work in all respects in line with the scope of work. Any delay in prescribed completion schedule will attract liquidated damages (LD) as per Clause No. 26 – Liquidated Damages (LD).

- d) The pre-shutdown activity period is excluded from above prescribed completion schedule for calculation of LD.
- e) Any observations/corrections required as per air load test or field test charging shall be attended as per instructions of EIC.
- f) Contractor has to arrange sufficient manpower to carry out work on round-the-clock basis (in 2 shifts of 12 hours).
- g) The said work shall be carried out in Unit-1 and Unit-4 boiler during annual overhaul planned tentatively in between the month of June 2026 to December 2026. However, unit number and AOH schedule may differ depending upon actual requirement of site.
- h) In case of delay in executing the contract by contractor, GIPCL reserves the right to engage another contractor and complete the balance job at the risk and cost of the contractor along with 10% overhead charges.

18. ASSIGNMENT AND SUB-LETTING

The Contractor shall not directly or indirectly assign or sub-let total/any part of the contract to any other party or agency.

19. CONTRACTOR'S OBLIGATIONS

A. Deployment and Responsibility of Manpower

- (i) The Contractor shall deploy suitably qualified and sufficient manpower for timely & satisfactorily execution of the works under the contract.
- (ii) The Contractor shall deploy sufficient skilled, semi-skilled and Un-skilled manpower separately to properly complete the job in given/scheduled time.
- (iii) The Contractor shall depute its own workmen/labor with proper identification to enter the plant premises after ensuring that the jobs are scheduled.
- (iv) At the time of deploying manpower, the Contractor shall strictly comply all the applicable labor laws/Acts norms including but not restricted to the age of the workers, women workers and shall also ensure that a police verification and security check for all the workmen/labor engaged at the GIPCL site is done and necessary documents regarding the same shall be submitted to the GIPCL's authorized representative/officer-in-charge. Any default in complying with the same or any misrepresentation regarding compliance of the same shall compel GIPCL to initiate appropriate civil or criminal proceedings regarding the same.
- (v) The Contractor shall also comply with the safety requirements and provide his workmen / labour with safety equipments like helmets, masks, gum boots, a uniform (minimum 3 pairs for AMC/ARC) and other necessary PPEs for properly undertaking the operations involved under this contract. Following are also to be issued by contractor:

- (a) Safety shoes
- (b) Goggles / Face shield
- (c) Ear plug / Ear muff
- (d) Hand gloves like electrical hand gloves / cotton hand gloves / chemical hand gloves
- (vi) Contractor shall nominate / authorize senior experienced person in writing as Site In-charge to co-ordinate with GIPCL Engineer and who shall bear overall responsibility for performance of the contract. Such person shall remain always available at site or site office allotted to the contractor at SLPP site. Contractor has to submit the authority letter and documentary proof for the same.
- (vii) The Contractor shall appoint a supervisor who shall co-ordinate with GIPCL Engineer In-charge for daily entrusted job. They have to maintain daily records duly signed for the works carried out and duly certified by Engineer-In-Charge. The Contractor in co-ordination with the Engineer-In-Charge shall ensure the availability of adequate manpower to carry out the job satisfactorily on a daily basis. As per the instruction of Engineer-In-Charge they have to allot the work and execute the same in specified time limit.
- (viii) During execution of the works, one or more jobs may be required to be done simultaneously and the Contractor shall mobilize additional resources accordingly.
- (ix) During emergency or similar situations, the Contractor shall be required to mobilize additional resources as per need within the period of 24 hours as directed by GIPCL. If the contractor fails to mobilize sufficient manpower to complete the job in time, GIPCL will execute the job through other agency at the risk and cost of the contractor with 10% overhead charges plus applicable GST as per extant GST laws & the same will be recovered from the Contractor's bill.
- (x) During working in high risk area like hot lines of steam/ water/ oil the workman must wear a suitable safety apron, safety belt, safety hand gloves and goggles. It is the contractors/contractor's supervisor's responsibility to ensure it without fail.
- (xi) During unit overhauling, the contractor has to enhance the site manpower as per the requirement to ensure the timely completion of work (During overhauling period quantum of work increases substantially). For this, enhanced work shall be completed by deploying additional manpower with separate supervisor. Payment will be made on item rate basis only. The work during the overhauling period is to be carried out round the clock. Contractor should mobilize sufficient number of manpower and execute the work in all shifts with independent manpower. Contractor should not continue the same manpower for more than 12 hours/day (i.e. manpower to be engaged in two shifts of 12 hours each).

B. Tools & Tackles:

- (i) All tools and tackles required to execute the contract are in the scope of the contractor. The contractor should ensure that tools and tackles are in healthy &

working condition. All consumable items i.e. cloth, cotton waste, kerosene oil, gases (Oxygen, D/A, Argon), welding machine, lifting tools, winch machine, grinding machine, welding electrode, anti-corrosive / bituminous paint, wire brushes, water pump with flexible pipes etc. would be in the scope of the contractor. The welding electrode should be of approved make i.e. Advani, Oerlikon, ESAB, D&H and L&T.

Note: If work is suffered due to want of sufficient manpower, tools & tackles, vehicles, equipments and/or required consumables then 25% of the total job cost plus applicable GST as per extant GST laws will be levied as a penalty for each and every instance.

- (ii) The Contractor shall be required to shift spares, material etc in required quantity duly approved by GIPCL's Engineer In-charge whenever necessary from GIPCL store/warehouse to site or site store as per the instructions of Engineer In-charge. Contractor shall be required to arrange transportation for above. The cost of transportation will be on contractor's account. The contractor shall be responsible for safe transportation, handling and storage. If equipment fails due to improper material shifting / handling, cost of such damages shall be recovered from contractor's bills. It is the responsibility of contractor to keep various materials separately to avoid intermixing. The failure/defects of equipment due to improper method of work, equipment assembly due to contractor negligence, and the losses will be recovered from contractor's bills.
- (iii) In case of breakdown of equipment, the contractor should work round the clock for putting back the area in service immediately within minimum time. In case of any emergency arising during night hours the contractor should be in a position to mobilize the manpower immediately within minimum time.
- (iv) Arrangement for lighting at the work spot has to be made by the contractor. He has to arrange all lighting equipment such as power cable, hand lamps. The contractor has to take prior approval for taking electrical power supply. The contractor should keep hand lamps of 24 volt for confined space and sufficient quantity of 240 volt and halogen lamp for other area ensuring safety at work place.
- (v) Pin sockets of IS standards should be used for all connections. For any accident take place & any damage to the equipment and/or injury to human due to carelessness in loose connection, contractors will be held responsible & liable for any recovery/actions.
- (vi) The Contractor must ensure that all the generated scrap materials are removed from the site immediately and he must ensure cleaning of the site. Further, these items should be disposed off to the scrap yard or any other designated place as instructed by Engineer In-charge. In case of heavy weight items, if required transportation may be arranged by the GIPCL at the discretion of the Engineer In-charge on chargeable basis. If the scrap removal is not done within the stipulated time given by GIPCL

Engineer, the scrap will be removed by GIPCL at the Contractor's cost with penalty and it will be deducted in the bill.

- (vii) It is the responsibility of Site In-charge to segregate and remove the scrap from site. Work will be certified by Engineer In-charge only after removal of scrap to the scrap yard.
- (viii) If any equipment or part are found damaged due to negligence / fault of contractor, the cost of such damages shall be recovered from the contractors' bill.
- (ix) The decision of the Engineer In-charge shall be final and binding on the contractor for defining the terms and condition included in this contract.
- (x) Inspection of work will be done by Engineer In-charge or his authorized representative, if the work is not found satisfactory, Engineer In-charge reserves the right to take suitable action.

20. CLARIFICATION OF BIDDING DOCUMENTS

If any Bidder requires any further information or clarification in the Bidding Documents, may notify the Company before one week of last date of submission of online Bid, in writing or by E-mail at the GIPCL's mailing address bggaijar@gipcl.com as indicated in the Invitation to Bids. The GIPCL's response (including an explanation of the query) will be sent in writing or by E-mail to all prospective Bidders who have received the Bidding Documents.

21. TIME SCHEDULE

The basic considerations and the essence of the 'Contract' shall be the strict adherence to the time schedule for performing the specified 'Works'.

22. UNDERSTANDING & CLARIFICATION ON DOCUMENTS & SPECIFICATION

The Bidder is required to carefully examine the specifications and documents, all the conditions and matters work wise & cost wise. If any Bidder finds any discrepancies or omissions in the specifications and documents or is in doubt for any meaning of any part, he shall request in writing for an interpretation/ clarification to the GIPCL.

All such interpretations and clarifications shall form a part of the Bid documents.

23. PAYMENTS

All the payments against the work order shall be in Indian currency and payable through cheque / RTGS only.

24. POINTS TO BE CONSIDERED DURING QUOTING ONLINE PRICE BID

- a. Section-E: Schedule of Quantities and Price shall be read in conjunction with Instructions to Bidders, General Conditions of Contract, Special Conditions of Contract and Technical specifications.
- b. The quantities given in the Section-E: Schedule of Quantities and Price are estimated and will be made as per actual work carried out as per the rates of Work Order.
- c. The method of measurement of completed work for payment shall be in accordance with the method of measurement specified in the Tender document.
- d. No separate amount shall be payable for use of auxiliary equipment incidental to or in day to day operation in the course of fulfillment of contractual obligation of the supplier.

25. QUANTITIES

The quantities specified are estimated and for tendering purpose only. Payment will be made, based on actual work done as certified by Engineer In-charge of GIPCL.

Quantities of individual items may be revised during the course of Contract period based on site requirement. Contractor shall not be entitled for any compensation on ground of such alteration in scope of work. GIPCL reserves the right to operate or increase / decrease quantities in each item or omit any item included in Schedule of Quantity at his discretion. Contractor shall have no claim, whatsoever, on grounds of loss of anticipated profit etc. on account of the same.

After commencement of the work, GIPCL, for any reason may not require to be carried out the whole/part of the work as specified in the tender, the Engineer In-charge shall inform the fact for thereof to the Contractor and the Contractor shall have no claim for any payment or compensation whatsoever on account of any profit or advantage which he might have derived from the execution of the work in full but which he did not derive in consequence of the full amount of the work not having been carried out nor shall he have any claim for compensation by reason of any change having been made in the original specifications and instructions which shall involve any curtailment of the work as originally contemplated.

26. LIQUIDATED DAMAGES (LD)

- a. In the event of contractor fails to complete the entire job as indicated in the scope of work, LD @ 0.5% of Executed work value (Including GST) for each day delayed beyond the prescribed time schedule will be deducted from the contractor's bills. LD shall be levied separately for each ESP work.
- b. However, the total amount of penalty/LD shall not exceed 10% of the contract value.

c. CROSS FALL BREACH CLAUSE:

Notwithstanding the execution of Contract for Mechanical execution for ESP fields replacements and overhauling of balance ESP fields in Phase-I & II Boilers during AOHs, Bidder shall be solely responsible for successful completion of the entire work covered in these contracts and performance of the systems as per the Contracts and accordingly the overall responsibility for the successful completion shall rest with bidder. It is expressly understood and agreed by bidder that any breach under any one of these contracts shall automatically be deemed as a breach under all the other contracts and vice-versa. Any breach or occurrence giving GIPCL the right to terminate any one contract and/or recover damages there under shall also give GIPCL the right, at their sole discretion, to terminate the other contracts and/or recover damages and/or get the work done under the breached contracts from alternate sources at bidder's costs and responsibilities. However, any such breach in any one of these contracts shall not automatically relieve bidder of any of their obligations under the other contracts.

SECTION - B

INSTRUCTIONS TO BIDDERS FOR ONLINE TENDERING

1. Tender documents are available only in electronic format and same can be downloaded from the website <https://tender.nprocure.com/> and it can also be viewed from company's website www.gipcl.com.
2. All Bids i.e. pre-qualification/techno-commercial bid (Part-1) and price bid (Part-2) should be submitted online through the website <https://tender.nprocure.com/> only. **No physical submission of Price Bid will be entertained as it should be submitted online only on (n)procure portal.** Also, no fax, e-mail, letters will be entertained for the same.
3. Following should be submitted 'off-line' in sealed covers separately during dates & time set in 'NIT' at our office at Village: Nani Naroli, Taluka: Mangrol, Dist.: Surat - 394 110, Gujarat:
 - Tender Fee,
 - EMD,
 - Supporting Documents for Technical Bid
4. Bidders who wish to participate in online tenders will have to procure / should have legally valid Digital Certificate (Class III) as per Information Technology Act-2000, using which they can sign their electronic bids. Bidders can procure the same from any of the license certifying Authority of India or can contact (n)code solutions- a division of GNFC Limited, who are licensed Certifying Authority by Government of India.
5. All bids should be digitally signed. The bidders are required to contact at the below mentioned address for detailed training on online tendering and also for any other requirement:

(n) Code Solutions - A division of GNFC Ltd.
403, GNFC Infotower, S.G Road,
Bodakdev, Ahmedabad- 380 054 (Gujarat, India)

Toll Free: 1-800-419-4632 / 1-800-233-1010,
Tel: 079-26857315 / 316 / 317
E-mail: nprocure@gnvfc.net
Website: www.nprocure.com

Note: Interested Bidders are requested to submit the online tender at least two days in advance from the due date set for online submission of bid in order to avoid non-participation in e-tender due to probable technical problem in (n)procure portal.

e-Reverse Auction:

1. GIPCL reserves the right to conduct e-reverse auction through (n)procure portal.
2. e-Reverse Auction shall be conducted amongst the lowest 50% eligible bidders (rounded to the next higher whole number) from the total bids received OR Minimum three (3) lowest bidders; whichever is higher, shall be invited for participation in e-Reverse Auction through E-reverse auction platform.
3. Lowest landed cost among all the bids shall be base price / opening price for reverse auction. Opening Price, Decremental value and duration for the e-Reverse Auction shall be informed to the qualified bidders before start of e-Reverse Auction.
4. After e-reverse auction process, L1 bidder shall be decided on lowest total contract price. Post e-Reverse auction, Reduction in prices will be distributed proportionately on price schedule of each line item.
5. To participate in e-Reverse Auction, Bidders have to create e-Auction user Id on <https://e-auction.nprocure.com>, so that the bidder shall be allowed to participate the e- reverse auction.
6. In case of any further information regarding online bidding or if Bidder needs any assistance in accessing / submission of online bid / clarification or if training is required for participating in online e-reverse auction, the Bidder can contact the following office for assistance or training:

(n)Procure cell,
(n) Code Solutions - A division of GNFC Ltd.
403, GNFC Info Tower, S.G. Road,
Bodakdev, Ahmedabad- 380 054 (Gujarat, India)
Toll Free: 1-800-419-4632 / 1-800-233-1010,
Tel: 079-26857315 / 316 / 317
Fax: 079-26857321 / 40007533
E-mail: nprocure@gnvfc.net
Website: <https://tender.nprocure.com/>

Bidder may visit <https://tender.nprocure.com/support> for information regarding e-tendering registration process.

SECTION - C

GENERAL CONDITIONS OF CONTRACT

1. CONTRACT SECURITY DEPOSIT/ PERFORMANCE BANK GUARANTEE

As a Contract Security/Performance Bank Guarantee, the successful Bidder, to whom the work is awarded, shall be required to furnish a **Performance Bank Guarantee (PBG)/Contract security deposit (SD)** in favour of Gujarat Industries Power Company Limited of an equivalent amount to ten percent (**10%**) of the total contract price excluding taxes and duties from any of Schedule Public Sector Bank or Schedule Private Sector Bank such as All Nationalized Banks, Axis Bank, ICICI Bank, HDFC Bank, Kotak Mahindra Bank, IndusInd Bank, Federal Bank, Bandhan Bank, IDBI Bank and Karur Vysya Bank in the prescribed format attached as per Annexure-A in Section-F, and it shall guarantee the faithful performance of the 'Contract' in accordance with the terms and conditions specified in these documents and specifications. Contract security deposit/PBG shall be submitted strictly within twenty-one (21) days from the date of Lol or Work Order, whichever is earlier. The entire PBG/Security Deposit shall be valid up to **twelve months (12) months** after the completion of contract period. SD / PBG shall be payable to the Company in Bidder's home currency without any condition whatsoever.

GIPCL reserves the right to forfeit Performance Bank Guarantee (PBG)/Contract Security Deposit.

The Performance Bank Guarantee / Contract Security Deposit will be returned to the Contractor, without any interest, after twelve (12) months of completion of total work under this contract and on fulfilling contractual obligations throughout the defect liability period as specified vide Clause No. 2.4 Defect Liability Period of Section-D Special Conditions of Contract. However, any delay in submission of SD will result in equivalent late release of entire SD after guarantee period.

Bid security/EMD shall be refunded to the successful bidder on receipt of PBG/SD. Bid security/EMD shall be refunded to other Bidders after completion of tendering process and award of LOI / WO to successful bidder.

2. PENALTY AND RECOVERY:

- (i) In the event the Contractor causes undue delay in performance or the performance is unsatisfactory causing harm to the plant and property of GIPCL, then in such a case, GIPCL (Engineer In-charge) shall be entitled to levy a penalty on the Contractor at the rate of 1.5 times of the item rate up to a maximum of 10% of the contract value plus

applicable GST as per extant GST laws. The said penalty amount may be recovered either from the monthly invoices or the Security deposit.

- (ii) In addition to and without prejudice to the above, GIPCL shall also have the right to get the affected work completed by a third party or agency at the risk and cost of the Contractor/and the Contractor shall be liable for any differential amount in the Contract price.
- (iii) In case of any damage of equipment/machinery due to negligence of contractor or any other reasons attributed to contractor the decision of Engineer In-charge regarding the amount of recovery shall be final and binding subject to a maximum of 10% of contract value plus applicable GST as per extant GST laws. Recovery will be affected from the monthly bills and/or retention money/security deposit.
- (iv) If the contractor fails to execute the work as per directions of Engineer In-charge within the time frame given in work order and as per day to day instructions by Engineer In-charge, GIPCL shall get the work done by third party at the risk & cost of the contractor with GIPCL's 10% additional overhead charges plus applicable GST as per extant GST laws.
- (v) The ascertainment of the cause of the damage shall be done by the GM (SLPP) and his decision in this regard shall be final.
- (vi) The decision of the Engineer In-charge as regard the amount of damages to be recovered from the Contractor shall be final.
- (vii) The aforesaid amounts of penalty and damages shall be recoverable from the monthly invoices of the Contractor *or* the Security deposit. If the amount of damages recoverable from the Contractor exceeds the total of invoices and/or Security deposit amount, then the Contractor shall become liable to pay the same to GIPCL and GIPCL shall be entitled to initiate appropriate proceedings against the Contractor for the same.

3. DEDUCTIONS FROM CONTRACT PRICE

All costs, charges or expenses that GIPCL may have paid, for which, under the Contract the Contractor is liable, shall be recovered by the GIPCL. The Contractor shall pay all such claims within 15 days of claim failing which the same shall be deducted from the bills of Contractor.

4. TERMINATION OF CONTRACT BY GIPCL

Contractor shall be responsible to complete the jobs within agreed time schedule and in case Contractor fail to complete the job, GIPCL shall recover from his bill, Security Deposit and / or whatsoever for expenses incurred to complete the job with additional 10% overhead charges plus applicable GST as per extant GST laws.

In case if contractor's services are not found satisfactory with respect to mobilization, time bound completion of work, workmanship & safety (OHSAS policy of GIPCL) etc. then GIPCL has right to terminate the contract at any time by giving you 15 days advance notice without assigning any reason and will make the alternate arrangement at the risk & cost of contractor.

GIPCL may terminate the contract after due recoveries of pending jobs / damages after giving 15 days advance notice to the Contractor if any of the following events occur:

- i. Contractor is adjudged as insolvent.
- ii. Contractor has abandoned the contract.
- iii. Contractor fails to proceed with the work with due diligence as per requirements of the contract.
- iv. Contractor has neglected or failed persistently to observe or perform any of the acts, matters or things, which as per the contract are to be observed and performed by the Contractor.
- v. Contractor repetitively violating the safety norms for more than three incidents.
- vi. Any major contradiction of applicable labour laws.
- vii. Any major deviations from contractual terms and conditions including quality of job.
- viii. GIPCL reserves the right to terminate the contract without giving any reason whatsoever and forfeit the PBG.

5. FAILURE & TERMINATION

If the Contractor after receipt of written notice from the GIPCL/Engineer In-charge requiring compliance, with such further drawings and/or the GIPCL/Engineer In-charge's instructions fails within seven days to comply with the same, the GIPCL/Engineer In-charge may employ and pay other agencies to execute any such work whatsoever as may be necessary to give effect thereto and all costs incurred in connection therewith shall be recoverable from the Contractor by the GIPCL on a certificate by the GIPCL / Engineer In-charge as a debt or may be deducted by him from any money due or to become due to the Contractor.

If the Contractor fails to execute the work or fails to mobilize the resources and equipments as per directions of GIPCL / Engineer In-charge within the time frame given and/or violating the GIPCL's safety rules & regulations, GIPCL / Engineer In-charge shall get the work done by third party at the risk & cost of the Contractor with additional 10% overhead charges plus applicable GST as per extant GST laws and all costs incurred in connection therewith shall be recoverable from the Contractor by the GIPCL / Engineer In-charge as a debt or may be deducted by him from any money due or to become due to the Contractor.

6. SETTLEMENT OF DISPUTES

- a. Any disputes or difference of opinion between parties arising out of the contract to the extent possible shall be settled amicably between the parties. If amicable settlement cannot be reached all the disputed issues shall be resolved through arbitration before a Sole Arbitrator appointed by Managing Director, GIPCL according to the provisions of The Arbitration & Conciliation (Amendment) Act-2019, as amended from time to time. The place of arbitration shall be at Vadodara/ Surat or any other place within state of Gujarat.
- b. Work under the contract shall be continued by the contractor during arbitration proceedings unless GIPCL shall order suspension thereof or any part thereof in writing or unless the matter in such work cannot possibly be continued unless the decision of the Arbitration proceedings is obtained.

7. INTERPRETATION OF CLAUSE

In case of disputes as regards interpretation of any of the clauses or specification, the decision of Addl. General Manager (O&M) - SLPP will be final and binding on the Contractor.

8. EMPLOYEE'S COMPENSATION INSURANCE

Contractor shall take all risk Insurance Policy to cover all his workmen/employees, staff applicable under the Employee Compensation Act 1923 or any amendment thereof as also insurance cover for third party liability. The Contractor shall keep the GIPCL indemnified from all liabilities arising out of his action in pursuance of this contract. The E.C. Policy should be obtained from Surat jurisdiction and shall be assigned to GIPCL. E.C. Policy should cover the specified contract period.

Contractor shall also obtain additional Off-duty coverage insurance policy for all his workmen.

9. STATUTORY REQUIREMENTS

A. COMPLIANCE OF LABOUR LAWS

The contractor shall at his own cost comply with the provision of labour laws, rules, orders and notifications whether central or state or local as applicable to him or to this contract from time to time. These Acts/Rules include without limitation of the followings:

1. Contractor shall be solely responsible and shall fully comply with all the provisions of all the labour laws applicable such as the Minimum Wages Act, 1948, Contract Labor (Regulation & Abolition) Act 1970, Factories Act, 1948, Payment of Bonus Act 1965,

Employees Provident Fund and Miscellaneous Provision Act 1952, Industrial Dispute Act 1947, Workmen Compensation Act 1923, Payment of Gratuity 1972, Interstate Migrant Workmen Act 1979, Equal Remuneration Act with Rules, Order and Notifications issued/made there under from time to time.

2. All other Acts, Rules/Bye-Laws, Orders, Notifications etc. present or future applicable to the contractor from time to time for performing the contract job.

- 2.1. The Contractor shall provide and be responsible for payment of Wages, Salaries, Bonus, Social charges, Insurance, Food, Accommodation, Transport, Medical and Canteen facilities and other statutory privileges and facilities to his personnel as per law/rules/regulations and orders of the Central Government, State Government, Local Authorities or other authorities as are in force from time to time. All employees of the Contractor shall be employee of the Contractor.
- 2.2. The contractor shall have a valid license obtained from Licensing Authority under the Contract Labor (Regulation & Abolition) Act-1970 at the time of execution of the contract covering all his employees working at SLPP site and furnish the same failing which GIPCL may terminate the contract at its sole discretion.
- 2.3. The Contractor shall at the time of execution of the contract have EPF Code Number obtained from the Authorities concerned under the Employees Provident & Miscellaneous Provisions Act, 1972 and remit contributions in respect of the employees employed by him at SLPP Site to the P.F office concerned every month failing which GIPCL will recover from the outstanding payment to the contractor from GIPCL.PF code of Gujarat region should be taken.
- 2.4. The Contractor shall maintain all records/registers required to be maintained by him under various labor laws mentioned above and produce the same before the Statutory Authorities whenever required.
- 2.5. The Contractor shall also submit periodical reports / returns to the various statutory authorities such as the Contract Labour (Regulation & Abolition) Act- 1970, Employees Provident Fund Act etc. under intimation to HR&A dept.
- 2.6. The Contractor shall not pay less than the Minimum Wages notified by the Government from time to time to his employees of corresponding categories.
- 2.7. The Contractor shall be responsible for payment of overtime wages to his workmen, if any, in case they are required to work beyond the prescribed hours under law as per applicable rates.
- 2.8. The contractor shall take Workmen Compensation Insurance Policy for all his employees working at GIPCL. The contractor shall indemnify the company against any liability due to any work injury or accident to any of its employees.
- 2.9. The Contractor shall in the event any of his workmen / employee sustains any injury or disablement due to an accident arising out of and in the course of his employment, provide necessary medical treatment and pay compensation as applicable, required under the Workmen's Compensation Act, 1923.

- 2.10. If any of the persons engaged by the Contractor misbehave with any of the officials or the Company or commit any misconduct with regard to the property of the Company or suffer from any serious communicable disease, the Contractor shall replace them immediately.
- 2.11. The Contractor shall not engage / employ persons below the age of 18 years. Employment of women shall be strictly according to applicable laws.
- 2.12. GIPCL will have right to deduct and disburse the claims of the individual / parties being a principal employer on any account whatsoever in relation to their employment with the contractor. The Security deposit will be released to the contractor at the end of the contractual tenure subject to an undertaking by the contractor that in the event any of his workmen or the heirs of workmen puts up a claim for recovery of money due to him from the contractor before the appropriate authority under the I. D. Act 1947 or under any other labour laws or for compensation under the Workmen's Compensation Act, 1923 and the appropriate authority has given a direction for making payment the contractor will meet the same or indemnify GIPCL if in the event GIPCL pays it as Principal Employer.
- 2.13. The contractor shall make payment of wages to his employees on fixed date within the period specified under the applicable law, in presence of representative of the company. He will submit a true copy of wage sheet, attendance register and P.F. remitted challan on monthly basis to HR&A dept. for verification and record.
- 2.14. The Contractor shall provide Safety items / kits to his employees such as safety shoes, goggles, ear plugs, hand gloves, safety belts etc. if any, required under the law.
- 2.15. The contractor shall conduct pre-induction and periodic medical checkup of his workmen as per applicable laws.
- 2.16. The contractor shall be solely responsible for any accident caused to his workers and should adhere to all rules / regulations as per labour laws of Government and other statutory laws as applicable.
- 2.17. The contractor should register himself under the Contract Labour Act, Employee Compensation Act and PF Act (Code no. to be mentioned) and submit the copy of registration certificate and should possess the same from the date of commencement of work, failing which the contract is liable to be cancelled. The E.C. Policy copy should be submitted to the GIPCL before commencement of the work and Labour License should be obtained within one week from the date of issue of Form-V. Contractor should apply for Form-V immediately after receipt of LOI. A copy of Labour License shall be submitted to GIPCL, HR&A department.
- 2.18. Contractor shall have to insure his workmen / supervisors etc. under Group Insurance scheme.
- 2.19. The Contractor shall be responsible for compliance of all statutory rules, regulation, act enforced from time framed by the government such as Factory Act, Employee Compensation Act, payment of 'Wages Act', Minimum Wages Act', Provident Fund Act, All Labour Laws Act in respect of employees engaged by him for the work and

shall have to maintain necessary records. In case any amount becomes due to be payable by him to his employees or to the Government under the above rules, regulation, Acts, GIPCL reserves the right to recover the same from the running bill of the contract.

- 2.20. Documentary evidence of deposit of PF paid shall have to be produced by the contractor along with the next bill.
- 2.21. Records as per the provisions of various statutory Acts will have to be maintained by the contractor and submitted as and when required.
- 2.22. All employees of contractor should maintain due discipline and respect local sentiments. GIPCL reserves the right to direct the contractor to remove any such person who does not comply with it.
- 2.23. The list is indicative in nature and not an exhaustive one. Any amendment/alteration/notifications or addition to the existing law or a new statute shall automatically and immediately become applicable.
- 2.24. Annual Health Check Up: As per statutory requirement, Contractor has to inform workmen deployed at site for annual health check up as per schedule prepared by HR&A department.

B. LEGAL ASPECTS

1. Contractor shall maintain all register required under the Labour Laws and make the payment as per the Minimum Wages Act to the workers employed by him.
2. Contractor shall obtain requisite license to carry out this contract under the provisions of Contract Labour Act, 1970 and maintain necessary records and registers under the said Act.
3. Contractor shall submit a copy of each of the registration certificates with respect to Employees Provident Fund and Employee Compensation Act within one-week time, from the date of award of this contract.
4. Contractor's employees, agent or sub-agent shall not smoke or light anything within the premises of the GIPCL and carry match box / lighter or any other explosive and /or inflammable material inside the plant.
5. Contractor shall abide by all the statutory rules and regulations like P.F., Labour Laws etc.
6. Contractor shall issue an appointment order to each casual workman stating therein the nature of job to be performed by him and fix time for which the concerned workmen are likely to be deployed. Contractor shall also issue a temporary identity card specifying the period for which the workmen has been deployed.
7. Contractor is fully liable for the persons engaged by him for above work; however, GIPCL reserves the right to deduct any amount legally justified towards any liability not fulfilled.

8. Contractor shall indemnify GIPCL from any liabilities arising out of the employment of the manpower.
9. If the Contractor fails to complete the allocated job within specified time frame, GIPCL shall get the work done by third party at the risk and cost of Contractor.

10. PAYMENT OF WAGES

Contractor shall be responsible for compliance of all statutory rules, regulation, act enforced from time framed by the government such as Factory Act, Employee Compensation Act, payment of 'Wages Act', Minimum Wages Act', Provident Fund Act, Payment of Bonus Act, Labour Law Act, maternity benefit act in respect of employees engaged by him for the work and shall have to maintain necessary records. In case any amount becomes due to be payable by him to his employees or to the Government under the above rules, regulation, Acts.

11. ACCIDENT TO WORKMEN

Contractor shall be fully responsible for injury or death of any of your or third-party workmen due to any act omission / indiscretion on your part while undertaking the work and Contractor shall fully abide by the statutory requirements of the employee's compensation act. GIPCL shall not be liable for any compensation due to accident, death or injury to any of Contractor's workmen or any third party due to negligence, act or omission on your part.

12. LIGHTING

Power supply for necessary illumination at works area will be provided by GIPCL. White LED lights, as per requirement, shall be mobilized by Contractor.

13. NIGHT/SUNDAY/HOLIDAY SHIFT

The Contractor shall depute qualified and adequate resources for working in night shifts, Sundays, holidays etc. for any emergency job.

14. SAFETY ASPECT

Contractor shall observe all the safety and security rules and regulation of the GIPCL which are at present in force and which may come into force during the pendency of the contract. Any violation of any rules and regulations will entail immediate termination of the contract.

When contractor moves his lifting tools and tackles to the plant area, required test certificates as per the Factory Act 1948 and the state factories rules has to be submitted to Safety dept. Safety dept. will check the certificates and if found okay, then only materials will be allowed

to enter inside the plant. Material inward gate pass will be made only after certification from Safety dept. Security dept. will inform to Safety dept., as & when such tools and tackles brought at the gate for making entry in the maintenance site.

The contractor has to submit the list of required safety gears along with safety equipments available with him to Safety dept. Safety dept. will check for quantity and quality of the safety gears and then allowed permission of work. Poor quality material will not be allowed to take inside the Plant. If quantity of required safety equipments is not satisfactory, contractor will not be allowed to carry out the work using such safety gears inside the Plant for the work.

15. GENERAL SAFETY CLAUSES

1. The Contractor shall observe and comply, with regard to his workmen working at the SLPP site, the safety norms as per the safety operating standards.
2. The Contractor shall ensure that his workmen are informed and trained regarding the safety standards to be adopted while operating within the SLPP Plant & Mines premises and the Contractor shall brief them regarding the same and use of the Personal Protective Equipment ('PPE').
3. The Contractor shall issue safety shoes and safety helmet of IS standard to all his workmen immediately on execution of the work and the contractor shall ensure that his workmen wears the protective equipment at all times during the work operation. Contractor shall issue safety shoes every year. Brand name for safety shoe & safety helmet shall be suggested by safety representative of SLPP site such as:

Helmet:

Sr. No.	Model	Company	Specifications
1	Tough Hat, HP-TH	Sure Safety	IS: 2925 – 1984, ANSI / ISEA Z89.1-2009
2	V-Gard	MSA	
3	PN 521 - Sheltmet	Karam	

Safety shoes:

Sr. No.	Model	Company
1	Acme Fabrik Plast Co.	SSTEELE (Strom) – Double Density
2		TRIMAX (Adjacent) – Double Density
3	Favourite Safety Products	Waves Nile D/D
4		FSP Nile DD

4. Other safety gears like ear plug, dust mask, hand gloves, safety goggles, gum boots, full body safety uniform and belts, safety net etc. shall be issued and used as per the job requirements. Safety helmet shall be of Yellow colour only. Contractor will procure safety shoes & safety helmet from a reputed company with at least 12 months' guarantee and shall produce the guarantee certificate and IS standard certificate to the safety department. Contractor should purchase safety shoes of reputed brands. Safety shoes will be issued every year. IS certificate and guarantee certificate must be obtained from the vendor and submitted to the Safety department. Safety shoes should be heat, water, oil and chemical resistant, having an anti-slippery sole of 15298- 2002 make.
5. It is the duty of contractor to ensure that his workmen are wearing required PPEs as per work requirement. Contractor should ensure that their workers are wearing Safety helmet, safety shoes, dust mask, goggles, ear plug etc. at all times when they are at work throughout the contract period. The contractor has to maintain the PPE issue register with signature of workmen.
6. Contractor will reissue these PPEs in case of damage or misplacement of the same. Replacement shall be made immediately. PPEs shall be available for all the persons and all the persons shall be using the same always.
7. The contractor shall be responsible for providing first aid or emergency medical help and treatment to his workmen in the event of any accident or injury.
8. If it is observed that contractor is not issuing required PPEs timely and that of required quality, GIPCL will issue the required PPEs to contract workers and back charge the same with 25% overhead charges of GIPCL.
9. All lifting tools and tackles shall be duly certified by competent person in conformity with the statutory requirements and certificate in form no. 10 as per rule 60 of Gujarat Factories Rules, 1963 and section 29 of the Factories Act, 1948 shall be submitted every year before using such tools and tackles. In case of purchase of new lifting tools and tackles, form no. 10 as per the said rules shall be submitted before they are taken into use. All lifting tools and tackles shall be of reputed make having International manufacturing standard and shall be maintained in proper and workable condition. All lifting tools & tackles and equipment shall be tested as per statutory requirements and valid test certificates are available. Winches, hoists and cranes shall be operated by experienced persons only.
10. The Contractor shall nominate one Safety Officer with required qualification for supervising the daily job/shutdown jobs for observing and maintaining the safety aspects at site. He is solely responsible for any safety measures during maintenance work. He has to ensure that all the workmen working at site are equipped with essential PPE's and proper safety arrangement is made at the SLPP site.
11. After mobilization of any tools & tackles to site, which includes chain pulley blocks, D-shackles, wire ropes, winch machines, Mobile crane, Hydra etc. shall be offered for inspection with all above statutory test certificate before using at site for any work. They

- should use all tools and tackles only after certification by GIPCL representative/safety officer.
12. When working at height, working on ceiling or roof covered with fragile materials, full body harness safety belt, ladders and crawling boards shall be used to prevent accident. Further, during working on height, proper scaffolding of still pipes, safety net, full body safety belt, fall arrestor system etc. shall be utilized by Contractor. Advice and instructions of Engineer In-charge/ Safety In-charge shall be strictly complied with in this regard. All necessary safety precautions shall be taken by the contractor to prevent accident and personnel injuries while working on height.
 13. All scaffolding pipes, clamps, jallies and associated parts shall be in good condition and safe for usage.
 14. Flash back arrestors made of reputed manufacturer shall be provided on cutting torch, on DA cylinders and on O2 cylinder. All gas cutting sets shall be equipped with flash back arresters at both end of the hose pipe of DA and oxygen. All gas cylinders heads are covered with caps and the same shall be required for handling the cylinders at height area. Gas cylinders shall be transferred through gas cylinder trolley only with cylinder cap and stored up right (vertical) position only. All gas cylinders shall be hydro tested / certified as per gas cylinder rules 2004. Gas cylinders shall be stored, handled as per gas cylinder rules 2004.
 15. All grinding and cutting machines are equipped with guard.
 16. All vehicles shall be operated by licensed drivers only. All vehicles' PUC to be tested as per Government approved RTO guidelines. All Vehicles must be parked in Parking space designated by GIPCL. If any vehicle is found inside the plant premises other than the parking area such vehicles shall be handed over to Security dept. and their entry shall be cancelled for movement inside the plant premises with immediate effect.
 17. All electrical equipment shall be in good condition, safe for usage and free from any defect. Electrical tools & equipment i.e. welding machine, grinding and drill machine etc. may be checked by the electrical engineer of the contractors regularly, every six months at least and report to be submitted to concerned HOD and safety depts.
 18. All welding machines, hand lamp, grinding machine, extension boards etc. are fitted with ELCB or RCCB and in working condition to prevent electrical shock. ELCB / RCCB shall be provided with rating of 9-30 milli amperes on welding machines and all portable power tools and ELCB/RCCB shall be checked regularly.
 19. 24V AC lighting to be used for portable lighting / hand lamp.
 20. Extension boards shall be standard industrial boards with male / female sockets.
 21. All cables, wires shall be in good conditions and without joints and cut marks and shall be terminated with plugs and applicable insert pins.
 22. Electrical related work shall be carried out through qualified & experienced electrician only.

23. During hot work, contractor will use fire curtains like asbestos sheets or fire blankets to prevent falling and spreading of sparks and hot material on and around the work area. Contractor will procure and use such items.
24. The contractor shall fill – up Incident notification form (S-I), Incident Investigation form (S-II) and near miss report within time limit as specified in forms, if any accident, Incident, near miss occurred while working at SLPP site.
25. Contractor shall appoint/nominate one qualified safety officer and he shall be responsible for addressing all the safety related aspects of execution of contract jobs and he will in close co-ordination with safety officer of SLPP and attend all safety related meeting such as safety committee, on job safety training etc. Where the contractual man power is less than 50, the site in charge of the contractor will act as a safety officer and he will perform all the duties of safety officer as mentioned above.
26. No loose connection / joints allowed in electrical cables during performance of any kind of job.
27. Safety shoes to be issued to female employees also.
28. All the vehicles shall be fit as per RTO guidelines and valid fitness certificate is required as per RTO guidelines.
29. The Contractor's nominated safety officer shall be imparted regular on-job safety training like tool-box talk etc. and submit a record of such training in safety dept, respective dept and HR&A dept.
30. Qualified and experienced safety supervisor and electricians, as applicable, shall be available round the clock.
31. The Contractor shall comply all the new requirements related with safety as informed by the HOD / Safety department from time to time.
32. Penalty to be imposed for Violation of safety norms is proposed as follows:

The Contractor & Contract workmen shall strictly adhere to Safety standards / Guidelines as per practices. The list provided below is an indicative list to explain the principles behind safety practice. If the contract workmen fail to comply with safety standards as per category A, B & C below, penalty shall be levied on the contractor as per the table mentioned below:

Category	Classification	Examples / Cases	Penalty
A	PPEs Related	Working without helmet, shoes, safety belts, gloves etc.	Rs. 100/- per instance.
B	WI Related	Failure to adhere to HSE guidelines / plans, careless attitude in material handling, Machine being used with damaged machine guard unsafe electrical work - workout plug top/improper electrical	<ul style="list-style-type: none"> • Rs. 500 /- per instant. • After three incidences, per incidence Rs. 2,500/-

		joints/cables lying on ground, electrical equipment working without proper earthing, machine being used without machine guard, Welding machine without ELCB / RCCB of proper rating, Gas cylinder without test certificate, Cylinder cap, NRV / Flash back arrester, Cylinder trolley etc.	<ul style="list-style-type: none"> • Continuous unsafe acts will disqualify the Contractor from further participation in tender of GIPCL-SLPP.
		Unsafe working practices at height more than 3 meters.	
		Working without permit or non-compliance with permit conditions like hot work, height work etc. as applicable, lifting tools and tackles being used without third party inspection certificates in form no. 9/10 as per Factory Act – 1948 etc.	
C	Unsafe Practices	Breach of safe practices by a particular person repeatedly for three times	<ul style="list-style-type: none"> • Suspend the entry gate pass for one week. • After two suspensions his gate pass will be cancelled.

Penalty so levied against the contractors and company employees will be used during the observation of National Safety Day.

The contractor, workmen following good safety practices in their work area continuously will be rewarded / honored on National safety day.

16. REJECTION OF WORK:

If, as a result of inspection, examination or testing, the GIPCL's representative/Engineer In-charge decides that any materials, work or workmanship is defective or otherwise not in accordance with the Contract, GIPCL/Engineer/GIPCL's representative may reject such plant, materials, work or workmanship and shall notify the Contractor promptly, stating his reasons. The Contractor shall then promptly make good the defect and ensure that the rejected item complies with the Contract. If Contractor failed to rectify the rejected work or workmanship, GIPCL/Engineer reserves the right to deduct or withhold amount against rejected work or Workmanship. Contractor shall not entitle for any claim or release of hold payment until rectify the defect up to satisfactory of GIPCL. If Contractor failed to rectify any such defective work or workmanship, GIPCL reserve the right to rectify at risk and cost of the Contractor and deducted by the GIPCL from any amount due, or to become due, to the Contractor's dues.

If the GIPCL/Engineer/GIPCL's representative requires such materials, work or workmanship to be retested, the tests shall be repeated under the same terms and conditions. If such rejection and retesting cause the GIPCL additional costs for the traveling and lodging costs of GIPCL/Engineer's personal for attending the retest, such costs shall be recoverable from the Contractor by the GIPCL and may be deducted by the GIPCL from any amount due, or to become due, to the Contractor.

17. GENERAL TERMS AND CONDITIONS:

- a. All tools & tackles, labour, equipments, machinery etc. to execute the contract are in the scope of the Contractor. The Contractor should ensure that tools & equipments are in healthy condition.
- b. The decision of the Engineer In-charge shall be final and binding on the Contractor for defining the terms and condition included in this contract.
- c. If the work is not found satisfactory, Engineer In-charge reserves the right to take suitable action.
- d. Contractor shall depute full time independent experienced Site In-charge / Supervisors at site. They shall co-ordinate with GIPCL Engineer In-charge and shall bear overall responsibility of contract including supervision, inspection, billing etc. Such person shall function from site office of contractor at SLPP.
- e. Contractor shall also nominate one safety supervisor at site and shall submit nomination of safety supervisor in writing before commencement of contract. Safety supervisor shall arrange small safety talk on every day morning or whenever required with all workers working under this contract. He shall coordinate with concern department's Engineer In-charge on daily basis and report daily observations, tool-box talk records etc. The work shall not be allowed without deploying safety supervisor and a penalty equal to Rs. 1,000/- per day absent of safety supervisor shall be levied from Contractor.
- f. Contractor shall strictly follow the existing work permit system of GIPCL and any future revisions.
- g. The Contractor has to take EC insurance policy / Off-duty insurance coverage for their workmen. The Contractor has to submit labour license and PF account number to the Engineer-in-charge before start the work.
- h. The Contractor has to do the job timely. GIPCL shall not compromise in delay. In case of delay of work without any valid reason, the GIPCL reserves the rights to carry out the work by deploying other agencies at the risk & cost of Contractor with additional 10% overhead charges plus applicable GST as per extant GST laws.
- i. Contractor shall mobilize the resources within maximum seven (7) days from GIPCL's intimation. If the Contractor fails to mobilize sufficient resources to complete the job in time, GIPCL will execute the job through other agency at the risk and cost of the Contractor with additional 10% overhead charges plus applicable GST as per extant GST laws.

- j. The prices / item rates quoted shall remain firm till completion of the contract and any agreed extensions thereafter and shall not be subject to any escalation, idle charges for labour, machinery, overhead expenses etc. due to any reason whatsoever. No price escalation/idle charges shall be entertained due to delay in work on unavailability of work front, unavailability of Contractor's supervisor, violation of safety rules, and unsafe act by any of Contractor's worker, negligence & ignorance of safety & quality instructions of GIPCL Engineer In-charge or any other reason whatsoever.
- k. Contractor must fulfill all the safety regulations and to take safety measures to avoid hazards. Contractor shall arrange all standard adequate healthy safety PPEs like but not limited to approved quality safety shoes & safety helmets, standard dust masks, safety goggles, etc. as required and shall use exclusively under this contract for all the time during working at specified locations failing which, the Engineer In-charge may hold the work and will take necessary action including penalty as decided. If the Contractor repeatedly violates safety rules/regulations (more than three successive incidents), Engineer In-charge may take necessary action against the Contractor, including appropriate financial penalty and/or termination of contract.
- l. One or more jobs may be required to be done simultaneously and Contractor shall mobilize additional resources accordingly.
- m. Timely completion of all jobs and works shall be the essence of this Contract. Contractor should closely monitor each activity and complete the jobs as per the time given by and under the supervision of the Engineer In-charge and shall ensure that sufficient manpower is deployed for the same.
- n. The contractor has to complete the works as per the planning schedule and their respective supervisor has to interact with Engineer In-charge for PTW (Permit to work), work instruction, return of permit etc.
- o. The contractor has to submit daily reports showing work carried out with details of available manpower etc.
- p. Any job other than the listed jobs in work order shall be executed by the Contractor on instruction from GIPCL and payment shall be made to the Contractor on respective item rate only.
- q. The Government of India has enacted the Micro, Small and Medium Enterprises Development Act, 2006 (the "Act") and the Act has come into force from October 2, 2006. The Bidder shall confirm whether your organization is registered under the Micro, Small and Medium Enterprises Development Act, 2006. If your organization is registered under the Act, please specify the category i.e., Micro Enterprise, Small Enterprise or Medium Enterprise under which it is registered and kindly attach a copy of your registration certificate.
- r. The Bidder shall provide details of registration along with copy of the registration certificate issued by the District Industries Centre/Department of Industries, etc of the respective State Government. It is to be noted that large scale industries and trading firms have been excluded from the purview of the Act.

- s. GIPCL is an ISO 9001, ISO 14001, OHSAS 18001 & ISO 50001:2011 (EnMS) certified company, and GIPCL gives extreme importance to maintain these global standards. Contractor shall be required to observe these standards while working with GIPCL. Contractor should ensure that his workmen/labour work in accordance with them.
- t. All laws, rules, regulations, notifications, etc. stated in this tender document, as amended from time to time shall be applicable. Where applicable self-certified true copies of the required documents to be furnished, unless stated otherwise explicitly.

18. CONTRACTOR'S SUPERVISION

The Contractor shall, during the whole time the work is in progress, employ a qualified experienced Site In-charge of the works with adequate experience in handling of jobs of this nature and with the prior approval of the GIPCL / Engineer In-charge. Such Site In-charge shall be constantly in attendance at the site during working hours. During Contractor's Supervisor's absence during working hours, if unavoidable, and also beyond working hours, when it may be necessary to give directions, orders may be given by the GIPCL / Engineer In-charge and shall be received and obeyed by the Contractor's superintendent who may have charge of the particular part of the work in reference to which orders are given. If requested to do so, the Engineer In-charge / GIPCL shall confirm such orders in writing. Any directions, instructions or notices given by the Engineer In-charge / GIPCL to him, shall be deemed to have been given to the Contractor. The representative of the Contractor shall have all necessary powers to receive materials from the GIPCL, issue valid receipts for the same, engage labour or purchase materials and proceed with the work as required for speedy execution.

None of the Contractor's Superintendents, Supervisors or workmen should be withdrawn from the work without due notice being given to the GIPCL / Engineer In-charge; further no such withdrawals shall be made if in the opinion of the GIPCL / Engineer In-charge such withdrawals will jeopardize the required pace of progress / successful completion of the work.

The Contractor shall employ in or about execution of the work only such persons as area careful, skilled and experienced in their respective trades, and the GIPCL shall be at liberty to object to and require the Contractor to remove any person employed by the Contractor in or about execution of works who in the opinion of the Engineer misconducts himself or is incompetent or negligent in the proper performance of his duties and all such persons shall not again be employed upon the works without the prior permission of the GIPCL.

Neither the Contractor nor the Engineer shall hire or employ any employee of any other party except by mutual consent.

19. CONTRACTOR TO REMOVE ALL OFFENSIVE MATTER IMMEDIATELY AND CLEAN-UP:

All loose materials, wastage, packing materials, cut pieces or other matter of an offensive nature shall not be deposited on the surface, but shall at once be carted away by the Contractor to some pit or place provided by him away from the site of work and approved by local authorities.

As a part of the work included in this contract, the Contractor shall completely remove and satisfactorily dispose of all temporary works to the extent directed. He shall tear down and dispose of all temporary works, shall remove or grade, to the extent directed, all plant and equipment, shall satisfactorily dispose off all rubbish resulting from the operations under this contract and shall do all work necessary to restore the territory embraced within the site of his operations to at least as good order and conditions as at the beginning of the work under this contract.

20. FACILITIES TO BE PROVIDED BY GIPCL:

A. The company shall provide the following facilities to the Contractor at the site:

- a. Electricity & water at nearest available one point shall be provided. Further distribution to be done by contractor at their cost.
- b. Quarter(s) on chargeable basis in GIPCL township shall be provided for Contractor's supervisors / engineers only, if available, and at sole discretion of GIPCL.
- c. Hydra for loading, unloading and shifting of materials, equipment, machinery etc. shall be provided on chargeable basis (based on availability). If GIPCL's Hydra is not available, contractor has to arrange on their own as the material shifting as per requirement from GIPCL warehouse up to work site is in contractor's scope.
- d. Workshop facility as available at site only. However, Contractor may visit the workshop to ensure the existing facility. For the facilities other than available, contractor has to carry out the job outside at their own cost.
- e. Site office shall be provided at site.
- f. First aid facilities as available on chargeable basis.

Apart from the above, no other facilities shall be provided by GIPCL.

B. GIPCL shall also conduct an orientation program appraising the workmen regarding the safety norms and measures to be observed during work operations at the plant site.

21. WORK MEASUREMENT / CERTIFICATION

- a. The work to be performed being a specialized nature, the contractor should be fully

conversant with modern practices and should be able to carry out works independently of large thermal power plant. The contractor shall therefore be required to engage qualified / experienced personnel to undertake the work as per specifications and requirement.

- b. Contractor should maintain one computer with printer for keeping daily records and maintain the data.
- c. All the work measurements shall be jointly recorded in a measurement sheet/register/relevant documents by the contractor / authorized representative of the contractor and the Engineer In-charge. The measurements shall be clearly written indicating date of measurement, location, reference to drawings, if any, and jointly signed.
- d. The Contractor shall be required to furnish satisfactory job completion report to GIPCL. The submission of report should be on daily basis, the monthly bill payment shall be released based on the certified reports of the works.
- e. Inspection of work will be done by Engineer In-charge or his authorized representative. If the work is not found satisfactory engineer in charge reserves the right to take suitable action and shall be binding to the Contractor.

22. PUBLIC HOLIDAYS:

The Contractor shall be responsible for giving benefit to all his employees, employed in whatsoever capacity, nine (9) public / paid holidays and the same shall be notified in advance and due communication thereof shall be made to the management.

23. BENEFIT PAYABLE IN CASE OF ACCIDENT OUTSIDE PREMISES OR NOT DURING THE COURSE OF EMPLOYMENT (OFF DUTY COVERAGE):

The Contractor shall provide an insurance coverage (medical + death benefit) for sum of Rs. 1 Lakh to all his workmen/labour deployed at GIPCL-SLPP site for the accident taking place anywhere outside the Company premises or at any place when the workman is not in course of his employment.

24. FORCE MAJEURE

The performance of the obligations herein contemplated may be suspended without incurring the penalty in the event of the subsistence of Force Majeure conditions.

If a Force Majeure situation arises, the affected Party shall promptly notify the other Party in writing of such conditions and the performance shall be suspended as per mutual agreement.

For the purposes of this clause, 'Force Majeure' means an event beyond the control of the Party and not foreseeable by the Party and shall include events of floods, explosions, riots, wars, hurricane, epidemics, any other Act of God, quarantine restrictions, terrorism, government actions and provided always that such acts result in the impossibility of the further performance of the contract.

25. INDEMNITY

The Contractor shall indemnify and keep harmless GIPCL from and against all actions, proceedings, claims, demands, losses, costs, damages and expenses whatsoever which may be brought against or suffered by GIPCL which it may sustain, pay or incur as a result of or in connection with the performance / purported performance / non-performance of the contract by the Contractor.

In case, in any litigation pertaining to labour employed through Contractor if any direction or order is issued by court at any point of time the Contractor shall comply with and implement such direction or order whether passed at the time of award of contract or during the pendency of contract. Further, the Contractor shall indemnify the GIPCL against all consequences arising and affecting GIPCL owing to the compliance of the orders by the Contractor.

26. GOVERNING LAW AND JURISDICTION

This tender document and contract shall be governed by the laws of India and the Courts at Baroda / Surat shall have jurisdiction regarding the same.

27. Where any portion of the General Condition of Contract is repugnant to or at variance with any provisions of the Special Condition of Contract, then unless a different intention appears, the provision of the Special Conditions of Contract shall prevail to the extent of such repugnancy of variance.

SECTION - D

SPECIAL CONDITIONS OF CONTRACT

1. DETAILED SCOPE OF WORK

The technical details of ESPs of Phase-I & Phase-II is tabulated in Section-A, Clause No. 2: Brief Scope of Work.

Technical details of ESP internals and General Scope of Work is described hereunder.

▪ **Collecting electrode suspension system:**

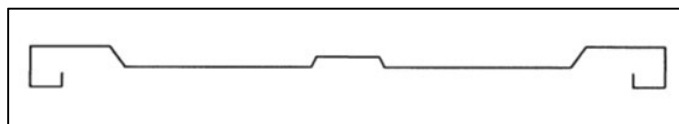
The collecting plates are made of 1.2 mm Corten steel Grade A and shaped in one piece by roll forming. The collecting electrode has unique profile designed to give rigidity and to contain the dust in a quiescent zone free from re – entertainment. Collecting electrodes are provided with slots, which are engaged on the hooks welded on the suspension angles. All the collecting electrodes in a row are held in position by a shock bar at the bottom. The shock bars are spaced by guides.

Contractor shall dismantle old parts, erect, position, perform alignment and welding/bolting/fixing/clamping collecting electrode suspension angles, collecting electrodes, U clamps, G clamp, shock bars, shock bar angle, U clamp guide, connecting strips, box beam, washer plates, fasteners, shock pad, shock bar guide along with attachment and ridge support with standard erection procedure and gap/distance or other quality parameter or critical dimension considering operation and / or erection of ESP will be maintain as per standard practice.

The technical specifications for collecting electrodes [for ESP type FAA-6 X 45 (45)-132-135-2] are as specified below:

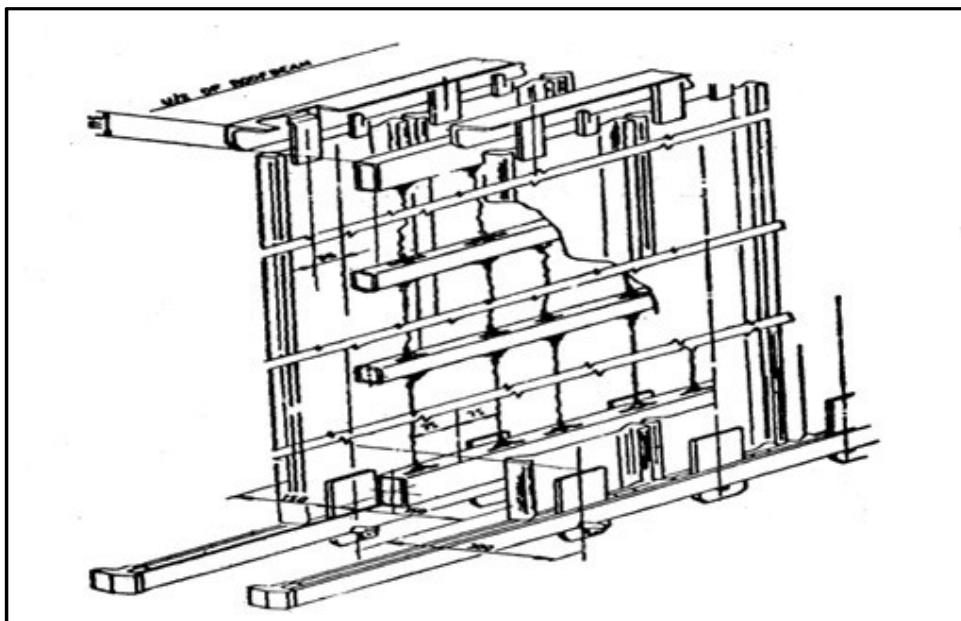
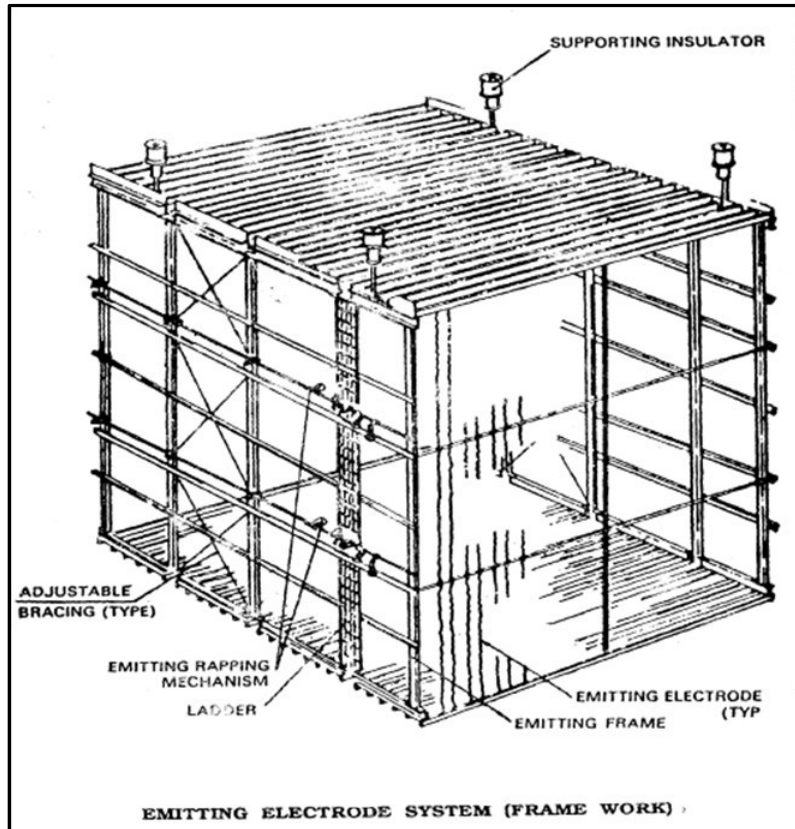
- Nominal height of Collecting electrode plate: 13,560 mm
- Nominal width of collecting electrode: 750 mm
- Material of Construction: Corten steel Grade A as per latest BHEL standard for collecting electrode
- Collecting electrode thickness: 1.2 mm (+/- 0.02)

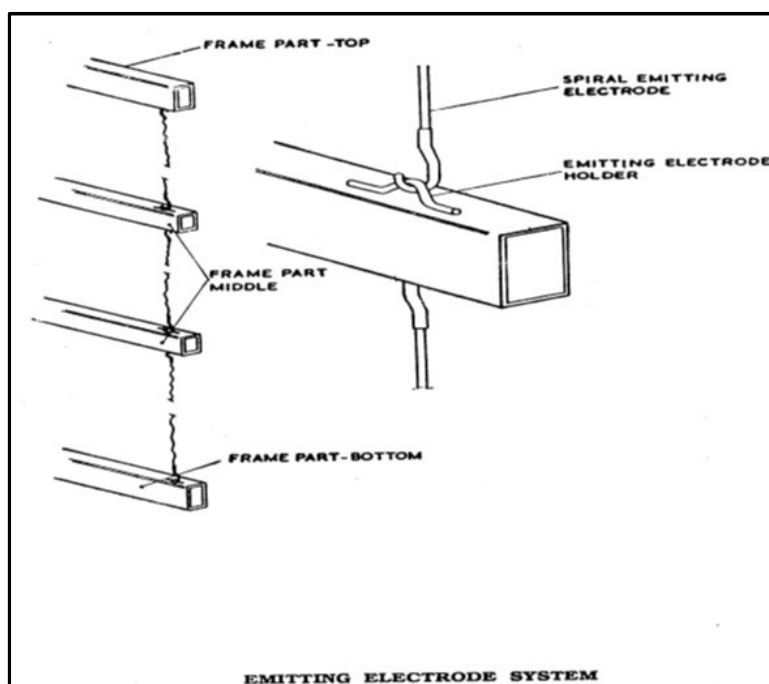
Cross sectional shape for collecting electrode as displayed in figure below:



▪ **Emitting electrode suspension system:**

The most essential part of precipitator is emitting electrode system. This is supported by four insulators. The frames for holding the emitting electrodes are located centrally between collecting electrode curtains. The entire discharge frames are welded to form a rigid box like structure and the emitting electrodes are affixed between the frames as displayed in following figures:





Contractor shall erect, position, perform alignment and welding/bolting/fixing/clamping of the emitting electrode frame work system as shown in figures above with standard erection procedure and gap/distance or other quality parameter or critical dimension considering operation and or erection of ESP will be maintaining as per standard practice.

The technical specifications of emitting electrodes [for ESP TYPE FAA-6 X 45 (45)-132-135-2] are as specified below:

- Emitting electrode type: Spiral with hooks
- Emitting electrode size: 2.7 mm dia.
- Emitting electrode material: Stainless steel confirming to UHB 904 L

▪ **Rapping systems:**

Rapping systems are provided for collecting and emitting electrodes (CERMs & EERMs). Geared motors drive these rappers. The hammers are positioned at an angular displacement of 210 degree / 195 degree for collecting rapping mechanisms of 300 mm pitch / 400 mm pitch respectively. For the emitting electrode the same is positioned at 240 degree. The rapping system employs tumbling hammers, which are mounted on a horizontal shaft. As the shaft rotates slowly the hammers tumble on to the shock bar/shock beam which transmits the blow to the electrodes. One complete revolution of the rapping shaft will clean the entire field. The rapper programmer decides the frequency of rapping. Rapping frequency chart is given in this manual. The tumbling hammer disposition and the periodicity of rapping are selected in such a way that less than 2 % of the collecting area is rapped at any instance. This avoids re-entertainment of dust and puffing at the stack. The rapping shaft of emitting

electrode system is electrically isolated from the geared motor drive by a shaft insulator. The space around the shaft insulator is continuously heated to avoid condensation.

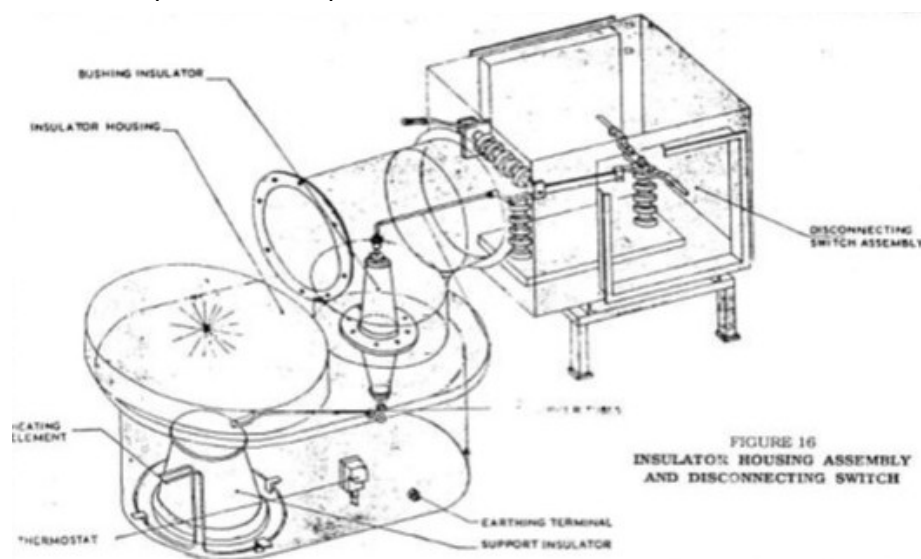
Contractor needs to erect, position, perform alignment and welding/bolting/fixing/clamping rapping shafts, sleeves, hammers, fasteners, plain bearings/fixed bearings, bearing supports, shims, pin-wheels, thrust bearing, vertical shaft bearing, set rings, CERM/EERM geared motors, pinions, couplings, clutches, shaft end connections, carbon bush, structures like bracket assemblies, bearings' cantilever support and required support along with all connected accessories with standard erection procedure and gap/distance or other quality parameter or critical dimension considering operation and or erection of ESP will be maintain as per standard practice.

Support Insulators & Insulator housings:

The support insulators, supporting the emitting electrode system are housed in insulator housing. The HV DC connection is taken through a bushing insulator mounted on the insulator-housing wall.

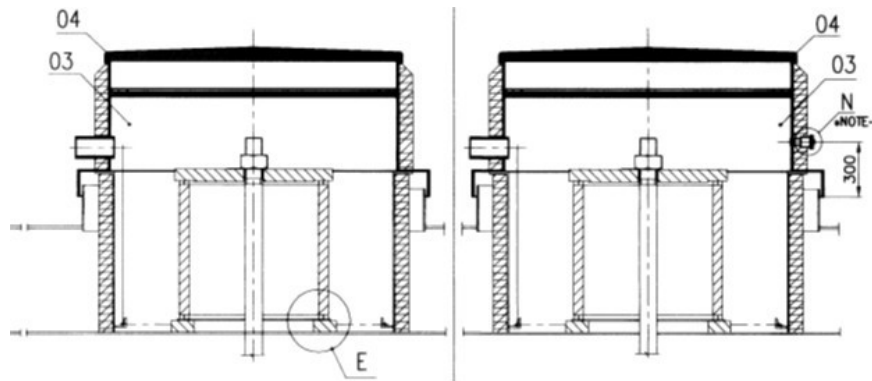
In order to avoid the condensation on the support insulators, each insulator is provided with one electrical heating element. Heating elements of one pass are controlled by one Thermostat.

Contractor needs to erect, position, perform alignment and welding/bolting/fixing/clamping parts mentioned in the drawing below with standard erection procedure and gap/distance or other quality parameter or critical dimension considering operation and or erection of ESP will be maintained as per standard practice:



Also for all four support insulators, erect, position, alignment and welding/bolting/fixing/clamping support insulator with duct along with auxiliaries like supporting flange, supporting

bracket, screen tube, locking washer, adjustment screw with rope and other CAF sealing membrane parts and suspension rod along with other all other accessories, round door, seal door with interlock to be erect and commission with standard erection procedure and gap/distance or other quality parameter or critical dimension considering operation and/or erection of ESP will be maintain as per standard practice.



The broad scope of work mainly covers following:

- [A]** Mobilization of manpower and resources for ESP Fields Replacements and overhauling works.
- [B]** Pre-Shut down activities
- [C]** Execution of Mechanical work during Shutdown
 - (i) **Schedule B1** - ESP Fields Replacement with Pitch Conversion & Overhauling in Phase-I ESPs
 - (ii) **Schedule B2** - ESP Fields Replacement & Overhauling in Phase-2 ESPs

Detailed description of above scope of work is as under.

[A] Mobilization of manpower and resources for ESP Fields Replacements and overhauling works:

The scope includes mobilization of necessary manpower (includes skilled/unskilled workmen, skilled technicians, riggers, execution supervisors, site in-charge etc.) along with necessary tools, tackles etc. to carry out the ESP field replacement work. Mobilization of manpower and resources shall be done within seven (7) days of written intimation given by GIPCL's Engineer In-charge. It also includes mobilization of all materials, consumables (such as welding electrodes, cutting gases, cotton waste etc.), special tools necessary for ESP fields erection/alignment (such as J-bolts, support insulator nut spanners, emitting electrode stretching tools, penthouse sheets fasteners/tools etc.) equipment, tools & tackles, machineries (includes welding machines, gas cutting sets, cutting torches, heating torch etc.), pulley blocks, winch machines, standard industrial safety PPEs etc. It also consists skilled supervisor, skilled technicians, skilled riggers, welders, gas cutters and helper in sufficient quantity to

complete the work within given time schedule. It includes telescopic crane of suitable load bearing capacity, suitable boom length and suitable radius as per site requirement (if necessary). The route for travelling of crane within plant shall be predefined and corrective action to clear the path shall be carry out by contractor.

Mobilization shall be done separately for each unit. Tentative mobilization schedule is as tabulated below:

Sr. No.	Description	Tender Conditions
1	Mobilization schedule of manpower	Mobilization of manpower and resources shall be done within seven (7) days of written intimation given by GIPCL's Engineer In-charge . The same consists of skilled supervisors, skilled technicians, skilled riggers, welders, gas cutters and helpers in adequate quantity, to complete the work within given time schedule, along with the mobilization of all materials, consumables (such as welding electrodes, cutting gases, cotton waste etc.), special tools necessary for ESP fields erection/alignment (such as J-bolts, support insulator nut spanners, emitting electrode stretching tools, penthouse sheets fasteners/tools etc.) equipment, tools & tackles, machineries (includes welding machines, gas cutting sets, cutting torches, heating torch etc.), pulley blocks, winch machines, standard industrial safety PPEs etc.
2	Mobilization of Manpower for Pre-shutdown Activity	For pre-shutdown activities, contractor shall mobilize following minimum manpower at site at least ten (10) days before the date of commencement of AOH for pre-shutdown activities as per intimation given by GIPCL: Site In charge / Site Supervisor - 1 No. Safety Supervisor -1 No. Total minimum manpower (workmen) to be mobilized for pre-shutdown activity - 15 Nos. that shall comprise of adequate foremen, technicians, mechanical fitters, riggers, gas-cutters, welders, helpers etc.
3	Mobilization of manpower during shutdown (includes pre-shutdown activity manpower already mobilized at site)	Contractor shall timely mobilize following minimum manpower with requisite skill, experience and knowledge of the work. Deployment of manpower shall be within two days after commencement of shutdown as per intimation given by GIPCL. Site In charge - 1 No. (In day shift)

Sr. No.	Description	Tender Conditions
		<p>Site Supervisor - 2 for each shift = 4 Nos. (2 x 12 hours shift) Safety Supervisor - 1 for each shift = 2 Nos. (2 x 12 hours shift) Store-keeper cum administrative work - 1 No. (In day shift) Total administrative staff: 7 Nos. as above</p> <p>Total workmen of suitable skill set to be mobilized per Unit: 80 Nos. that shall comprise of adequate foremen, technicians, mechanical fitters, riggers, gas-cutters, welders, helpers etc.</p> <p>The schedule of manpower deployment shall be decided jointly after award of work order and contractor has to ensure manpower deployment as per agreed schedule.</p> <p>Important Note:</p> <ol style="list-style-type: none"> 1. The above figure of total workmen is purely tentative and minimum, which shall be mobilized at site for round the clock work execution (2 shifts each of 12-hours). It is to be noted that deputation of above referred manpower does not relieve contractor from their responsibility of completing the work within prescribed time schedule in all respects. If actual work progress as well as deputed manpower is not adequate to match the schedule, then in such case, contractor has to augment additional required manpower so as to complete the work within prescribed schedule without any delay. 2. GIPCL reserves the right to take suitable actions in line with terms and conditions of tender / work order in case contractor fails to take necessary actions to make up the delay OR not responding to GIPCL's instruction in this regard. This will be treated as failure of contractor to perform and GIPCL reserves right to get the balance work done with other available agency at the risk and cost of contractors as per terms and condition of this tender.
4	Accommodation for manpower	Accommodation of contractor's manpower is not allowed in the plant premises. Contractor has to make his own arrangement for the accommodation and conveyance of their manpower.

Penalty in case of inadequate mobilization of manpower & resources:

Contractor shall mobilize adequate manpower and resources within seven (7) days of verbal or written intimation given by GIPCL's Engineer In-charge. However, in case of delay in the mobilization of adequate manpower & resources beyond seven (7) days in line with the intimation by GIPCL/as decided during pre-shut down meetings, considering the job requirement for timely completion of work in stipulated AOH period, then penalty of **Rs. 1,000/- per day per workmen** and **Rs. 2,500/- per day per Supervisor** shall be deducted from the RA bill of respective Unit.

[B] Pre-Shut down activities:

It broadly includes making necessary arrangements for shifting, lifting, dismantling, removal and replacement of collecting electrode of ESP fields. For this, the top shed of ESP (penthouse sheets) needs to be dismantled above working area. Planning for material handling i.e. making derrick for inserting new collecting electrodes (plates) on ESP top roof, shifting of new collecting electrodes (CE) to place, from where vertical shifting of bundle of CE initiated. Shifting of CE from ground to ESP roof plate, stacking CE to roof properly. Fixing of U clamp on CE plates. It also includes preparation of CE straightening frame for verification if required. Contractor should specify the minimum time required to carry out pre-shutdown activity with necessary tools and tackles along with techno commercial bid without price bid. Contractor must depute their Site In-charge/supervisor well in advance after intimation by GIPCL (at least 15 to 20 days prior to shutdown) for pre-shutdown meeting to plan Pre-shutdown activities and timely commencement of preparation work at site.

[C] Execution of Mechanical work during Shutdown:

This part covers cleaning, washing, inspection, dismantling of old ESP internals as per requirement, replacement of collecting electrodes and emitting electrodes, replacement / repair of other parts as per requirement, pitch conversion (applicable for Phase-1 ESP) overhauling of remaining fields, testing and commissioning of fields.

The work covered under this part is divided in phase-wise Schedules as under:

- (i) **Schedule B1** - ESP Fields Replacement with Pitch Conversion & Overhauling in **Phase-1** ESPs (Clause No. B1-1 to B1-35)
- (ii) **Schedule B2** - ESP Fields Replacement & Overhauling in **Phase-2** ESPs (Clause No. B2-1 to B2-33)

Clause-wise detailed scope of work covered under activities of Schedule B1 and Schedule B2 is given as under:

➤ **Clause No. B1-1 - ESP Fields Replacement with Pitch Conversion in Phase-I**

ESP fields replacement with Pitch conversion in Phase-I Units (i.e. 300 mm existing pitch converted to 400 mm modified pitch) shall comprise of following scope/points also along with the ESP field internals replacement scope defined above:

- Permit to Work (PTW) for ESP fields internals replacement work shall be provided by GIPCL.
- Ensure the mechanical and electrical isolation of ESP fields.
- Assist pressurizing test to identify leakage of casing.
- Open all manhole door and earth all the ESP fields.
- Carry out the water washing of ESP fields & Hoppers (Pass wise) including inlet and outlet funnel of both passes.
- Inspect casing including funnel/funnel corner for any leakage/air ingress and submit detail report after inspection of casing through mail clearly mention the leakage detail.
- Comprehensive cleaning/scraping of ESP casings from inside for both CERM side casing and NCERM side casing need to be carried out wherever required.
- Cut the ESP top roof plates (both inner & outer roof) as per requirement of appropriate size for insertion of ESP field internals. It shall include the removal of wool from inner roof & scrap wool disposal at mines as specified in this tender document.
- Remove existing TR set from ESP top floor, shift the same to vacant area in vicinity. All associated cable/cable tray, earthing flats etc. of transformer that are fouling at the outer roof shall be temporarily removed and re-installed to its original state after field internals replacement work completion and inner & outer roof box-up work.
- Lock the emitting electrode suspension system (EESS) of ESP field temporarily by J-bolts.
- Before fixed locking of EESS, frame should be checked vertical, Horizontal, diagonal & also level of EE frame Top, bottom by water level and others.
- Dismantle the recti-former sets, emitting electrode rapping mechanism (EERM) gearboxes as applicable.
- All the existing measurements should be taken and note down on separate page & kept safely.
- All emitting electrodes (EE) to be removed from the ESP fields and to be shifted to scrapyards immediately. Well grousing required all joint dismantling point to re-fixing on its new spare.
- All collecting electrodes (CE) including shock bars to be dismantled from the ESP fields and to be shifted to scrapyards immediately.

- Install collecting electrode suspension frame and weld the same as per standard ESP erection procedure. Check and verify the pitch of affected collecting electrode suspension frame (hook to hook). If found defective, same to be rectified.
- CE Suspension System (CESS): CE Suspension angle assemblies dismantling and installation with upgraded design with verified diagonal along with removal of old transverse CE suspension support beams and re-installation of new CESS support beams. An earthing strip should be welded with collecting hanger on one side of casing plate.

Note: Critical dimension i.e. CE suspension Hanger Plane to TOS of EE rectangle sub frame at top to be maintained in modified design.

- Replace all old horizontal rectangle sub frames (size 40 x 60 x 2.5 mm) and vertical stays (25 NB round tubes) of Emitting Electrode Suspension Systems (EESS) with new.
- Inspect and replacement/repair the damaged EESS vertical beam(s)/box(s) of size 80 x 80 x 2.5 mm.
- Affix the new collecting electrodes (plates) in position. Affix the existing or new shock bars. Affix the collecting electrodes (plates) in each row in U-clamp & G-clamp. Tighten the fasteners between shock bar & collecting plate by torque wrench and tack weld its nut with bolts.
- Erect scaffolding in both the hopper of field for approaching the shock bar, shock bar guide. If required for replacement of internals (Scaffolding material will be in the scope of contractor). Size of hoppers being 6.8 m x 6.6 m at top and 0.4 m x 0.4 m of conical shape and height being 8 m.
- Shock bar: Total replacement with existing design with HSG (High strength friction grip) fasteners system.
- Shock bar Guide Rapping + Non-Rapping Assembly: Replacement with modified design.
- Shock bar Guide top angle: Replacement with modified design.
- CE + Washer Plate + U clamp + G clamp: Total Replacement with Existing Design with HSFG (High strength friction grip) fasteners system.
- Collecting Electrode Rapping Mechanism (CERM): Clutch + Coupling + CERM shaft including end shaft + Inner Arm (IA) + Outer Arm (OA) + Bearings along with its bracket + set rings need to be replaced as complete assembly. All hammer should be fixing as per required phase angle (degrees).

Note: Alignment of new CERM system must also matched with existing hitting point / shock bar elevation. Critical dimension to be maintain as per modified design: All 3 side (Trans) + (Vertical) + Z (Linear).

- Emitting Electrodes rapping Mechanism (EERM): Horizontal shafts i.e. middle + bottom along with its pin-wheels (2 Nos.) to IA+OA + All Bearings along with its brackets needs to be replaced as complete assembly.
- CERM & EERM - Rapping shafts trial run by manual and should be run freely.

➤ Following optional replacements / modifications as directed by Engineer In-charge may need to be executed along with:

- (a) Bearing support brackets of CERM.
- (b) EERM: Grip coupling (Both) to Thrust bearing (1-Bottom most) of vertical shaft system planned for replacement including & Bush bearing.

➤ Following system needs to retained (as directed by Engineer In-charge and subject to joint inspections):

- (a) Support Bracket Boxes of CERM system.
- (b) TR Beams (1 + 1) + LR Beam (1)
- (c) CE suspension Support Beams (3+3) in linear direction.
- (d) CERM Geared Motor Outside ESP casing.
- (e) EERM Geared motor Outside ESP casing.
- (f) Support Insulator and all associated members including suspension bolts + Support Insulators + Washer Plates + Nuts + Check Nuts.
- (g) EE Suspension Arrangement including Insulator Housings & Heaters.

Note-1: Distance from Casing to retained EE Suspension arrangement (EESA) need to be maintained above critical distance for 400mm pitch design ($155 \times 1.5 = 235$ mm) throughout the EESA periphery throughout the field.

Note-2: Distance from CE / CE system to retained EE Suspension arrangement (EESA) need to be maintained above critical distance for 400 mm pitch design ($155 \times 1.5 = 235$ mm) throughout the EESA periphery throughout the field except collection/working area.

- Affix the new emitting electrodes (springs) by stretching tool - total Replacement with Existing Design. Erection of the EEs from middle side thoroughly with the back value minimum 450 mm by stretching device.
- Erect, position, alignment and welding/bolting/fixing/clamping/installation of collecting shaft, inner arms, outer arms, plain bearings & fixed bearings etc. to be completed in all respect.
- Erect, position, alignment and welding/bolting/fixing/clamping/installation of emitting electrodes rapping horizontal shaft (at two elevations), inner arms, outer arms, plain bearings & fixed bearings etc. to be completed in all respect.
- Check emitting electrode vertical shaft arrangement, bearings, thrust bearings, screen tube, shaft insulator, grip coupling, carbon bush etc. and repair/ replace the damaged parts if required (in case of replacement, and if applicable, the same shall be payable against separate execution/billing as per relevant clauses of Section-E). Erect, position, alignment and welding/bolting/fixing/clamping/installation of emitting electrodes

rapping vertical shafts arrangement, bearings, thrust bearings, screen tubes, shaft insulator, grip coupling, carbon bush etc.

- Check the emitting electrode frames/sub frames/vertical beams (box) & repair the damages if any. Erect, position, alignment and welding/bolting/fixing/clamping/installation/checking of the emitting electrode frames/sub-frames.
- After complete replacement of emitting electrodes & collecting plates, perform alignment of field for gap. Ensure that the gap between collecting plates and emitting electrodes for each row should be equal to critical dimension allowed by the Go/No go gauge.
- Removed the fixed locking from EESS frame.
- Clean the shaft insulators & support insulators. Replace the same if required. Erect, position, alignment and welding/bolting/fixing/clamping/installation of shaft insulators & support insulators. The lifting tool required for support insulator removal is in contractor's scope.
- Joint inspection shall be carried out for checking gaps between CEs & EEs at all points of the field. If defect observed regarding critical gap between CEs & EEs, the same shall be rectified immediately.
- Close all manhole doors opened earlier.
- Normalize the ESP top roofs (both inner and outer along with the insulation affixing on inner roof). Weld the weld joints by E 7018 A1 grade electrodes. Welding at all areas of ESP fields shall be done by certified welders or approved welder by GIPCL only. As the verification of quality of welding, DP test need to be carried out for 5% of length of weld randomly. If found unsatisfactory corrective action need to be taken by contractor. DPT kit to be arranged by contractor.
- Replace the ceramic ropes of manhole doors of CERM, EERM, penthouse & hopper.
- Remove the foreign material/scrap/debris etc. accumulated in hopper after ESP fields internals replacement and fields overhauling related work.
- Clean & complete the housekeeping of the area. Remove all the accumulated scrap & transport it to the scrap yard as per instructions of Engineer In-charge. Hydra/tractor/any other vehicle arrangement for the same shall be in contractor's scope.
- Air load test: After completion of all repairing / replacement work all fields of Unit to be charges. At the time of charging all fields to be set at charge ratio 1 and all field need to generate maximum possible Secondary Voltage (KV) @ maximum/rated Secondary current (mA) with minimum spark per minute. Air may charge through respective pass by running ID fan to check conformity of low spark with air charge. If maximum Secondary current not reached due to sparking. Field need to re-inspect and corrective action need to be taken by contractor.
- Assist for fields test charging & ensure that all the fields develop required voltage (kV) & amperes (mA) after repair/replacement/rectification.
- Normalize the top shed (penthouse sheets) of ESP. Fastener and other related auxiliaries like nuts/graphite washers shall be arranged by the contractor.

- Scaffolding is needed to be erected for opening and closing of Hopper manhole doors (MHDs) for Phase-I Units, as directed by Engineer In-charge. Scaffolding shall also be erected at hopper outside for insulation removal & window opening cutting for damaged ESP internals dismantling. The window opened shall be restored with new plate along with full welding and affixing insulation.
- Any other activity which is not listed above but required for replacement of ESP fields internals with pitch conversion shall also be part of scope of work without any cost implication to GIPCL.

➤ **Clause No. B2-1: ESP Fields Replacement in Phase-2 ESPs**

- Permit to Work (PTW) for ESP fields internals replacement work shall be provided by GIPCL.
- Ensure the mechanical and electrical isolation of ESP fields.
- Assist pressurizing test to identify leakage of casing.
- Open all manhole door and earth all the ESP fields.
- Carry out the water washing of ESP fields & Hoppers (Pass wise) including inlet and outlet funnel of both passes.
- Inspect casing including funnel/funnel corner for any leakage/air ingress and submit detail report after inspection of casing through mail clearly mention the leakage detail.
- Comprehensive cleaning/scraping of ESP casings from inside for both CERM side casing and NCERM side casing need to be carried out wherever required.
- Cut the ESP top roof plates (both inner & outer roof) as per requirement of appropriate size for insertion of ESP field internals. It shall include the removal of wool from inner roof & scrap wool disposal at mines as specified in this tender document.
- If applicable & required, remove existing TR set from ESP top floor, shift the same to vacant area in vicinity. All associated cable/cable tray, earthing flats etc. of transformer that are fouling at the outer roof shall be temporarily removed and re-installed to its original state after field internals replacement work completion and inner & outer roof box-up work.
- Lock the emitting electrode suspension system (EESS) of ESP field temporarily by J-bolts.
- Dismantle the recti-former sets, emitting electrode rapping mechanism (EERM) gearboxes as applicable.
- All emitting electrodes (EE) to be removed from the ESP fields and to be shifted to scrapyard immediately.
- All collecting electrodes (CE) including shock bars to be dismantled from the ESP fields and to be shifted to scrapyard immediately.
- Inspect and replacement/repair the damaged EESS vertical beam(s)/box(s) of size 80 x 80 x 2.5 mm.

- Replace all damaged horizontal rectangle sub frames (size 40 x 60 x 2.5 mm) and vertical stays (round tubes) of Emitting Electrode Suspension Systems (EESS). Erect, position, alignment and welding/bolting/fixing/clamping/installation/checking of the emitting electrode frames/sub-frames (in case of replacement, the same shall be payable against separate execution/billing as per relevant clauses of Section-E).
- Affix the new collecting electrodes (plates) in position. Affix the existing or new shock bars. Affix the collecting electrodes (plates) in each row in U-clamp & G-clamp. Tighten the fasteners between shock bar & collecting plate by torque wrench and tack weld its nut with bolts.
- Erect scaffolding in both the hopper of field for approaching the shock bar, shock bar guide. If required for replacement of internals (Scaffolding material will be in the scope of contractor). Size of hoppers being 6.8 m x 6.6 m at top and 0.4 m x 0.4 m of conical shape and height being 8 m.
- Shock bar: Total replacement with existing design with HSG (High strength friction grip) fasteners system.
- Shock bar Guide Rapping + Non-Rapping Assembly and Shock bar Guide top angle to be replaced (in case of replacement, the same shall be payable against separate execution/billing as per relevant clauses of Section-E).
- CE + Washer Plate + U clamp + G clamp: Total Replacement with Existing Design with HSFG (High strength friction grip) fasteners system.
- Check collecting electrode rapping mechanism (CERM) shaft, inner arms, outer arms, plain and fixed bearings etc. and repair/replace the damaged parts if required (in case of replacement, the same shall be payable against separate execution/billing as per relevant clauses of Section-E). Erect, position, alignment and welding/bolting/fixing/clamping/installation of collecting shaft, inner arms, outer arms, plain bearings & fixed bearings etc.
- Check emitting electrode horizontal shafts (at two elevation), inner arms, outer arms plain & fixed bearings etc. and repair/replace the damaged parts if required (in case of replacement, the same shall be payable against separate execution/billing as per relevant clauses of Section-E). Erect, position, alignment and welding/bolting/fixing/clamping/installation of emitting electrodes rapping horizontal shaft (at two elevations), inner arms, outer arms, plain bearings & fixed bearings etc.
- Check emitting electrode vertical shaft arrangement, pin wheel-1, pin wheel-2, bearings, thrust bearings, screen tube, shaft insulator, grip coupling, carbon bush etc. and repair/replace the damaged parts if required (in case of replacement, the same shall be payable against separate execution/billing as per relevant clauses of Section-E). Erect, position, alignment and welding/bolting/fixing/clamping/installation of emitting electrodes rapping vertical shafts arrangement, pin wheel-1, pin wheel-2, bearings, thrust bearings, screen tubes, shaft insulator, grip coupling, carbon bush etc.
- Affix the new emitting electrodes (springs) by stretching tool - total Replacement with Existing Design.

- After complete replacement of emitting electrodes & collecting plates, perform alignment of field for gap. Ensure that the gap between collecting plates and emitting electrodes for each row should be equal to critical dimension allowed by the Go/No go gauge.
- Removed the fixed locking from EESS frame.
- Clean the shaft insulators & support insulators. Replace the same if required. Erect, position, alignment and welding/bolting/fixing/clamping/installation of shaft insulators & support insulators. The lifting tool required for support insulator removal is in contractor's scope.
- Joint inspection shall be carried out for checking gaps between CEs & EEs at all points of the field. If defect observed regarding critical gap between CEs & EEs, the same shall be rectified immediately.
- Close all manhole doors opened earlier.
- Normalize the ESP top roofs (both inner and outer along with the insulation affixing on inner roof). Weld the weld joints by E 7018 A1 grade electrodes. Welding at all areas of ESP fields shall be done by certified welders or approved welder by GIPCL only. As the verification of quality of welding, DP test need to be carried out for 5% of length of weld randomly. If found unsatisfactory corrective action need to be taken by contractor. DPT kit to be arranged by contractor.
- Replace the ceramic ropes of manhole doors of CERM, EERM, penthouse & hopper.
- Remove the foreign material/scrap/debris etc. accumulated in hopper after ESP fields internals replacement and fields overhauling related work.
- Clean & complete the housekeeping of the area. Remove all the accumulated scrap & transport it to the scrap yard as per instructions of Engineer In-charge. Hydra/tractor/any other vehicle arrangement for the same shall be in contractor's scope.
- Air load test: After completion of all repairing / replacement work all fields of Unit to be charges. At the time of charging all fields to be set at charge ratio 1 and all field need to generate maximum possible Secondary Voltage (KV) @ maximum/rated Secondary current (mA) with minimum spark per minute. Air may charge through respective pass by running ID fan to check conformity of low spark with air charge. If maximum Secondary current not reached due to sparking. Field need to re-inspect and corrective action need to be taken by contractor.
- Assist for fields test charging & ensure that all the fields develop required voltage (kV) & amperes (mA) after repair/replacement/rectification.
- Normalize the top shed (penthouse sheets) of ESP. Fastener and other related auxiliaries like nuts/graphite washers shall be arranged by the contractor.
- Scaffolding shall be erected at hopper outside for insulation removal & window opening cutting for damaged ESP internals dismantling. The window opened shall be restored with new plate along with full welding and affixing insulation.
- Any other activity which is not listed above but required for replacement of ESP fields internals shall also be part of scope of work without any cost implication to GIPCL.

In case partial replacements of ESP fields internals replacement carried out for Phase-I & Phase-II ESPs, following table will govern for billing:

Phase-I		
Scope executed	Billing to be certified	Remarks
If 11 rows or less than 11 rows of CEs are replaced	33% of <u>Clause 1 of Section-E: Schedule of Quantities & Price</u> shall be certified for exact 11 rows replacement. Proportional if less than 11 rows replaced.	Balance items shall be needed to be installed/replaced as per actual scope of work as detailed above for ESP fields internals replacement work
If greater than 11 rows but equal to or less than 21 rows of CEs are replaced	58% of <u>Clause 1 of Section-E: Schedule of Quantities & Price</u> shall be certified for exact 21 rows replacement. Proportional if less than 21 rows & greater than 12 rows are replaced.	
If greater than 21 rows but equal to or less than 33 rows of CEs are replaced	90% of <u>Clause 1 of Section-E: Schedule of Quantities & Price</u> shall be certified for exact 33 rows replacement. Proportional if less than 33 rows & greater than 22 rows are replaced.	
If greater than 33 rows but equal or less than 43 rows of CEs are replaced	100% of <u>Clause 1 of Section-E: Schedule of Quantities & Price</u> shall be certified for exact 33 rows replacement. Proportional if less than 43 rows & greater than 34 rows are replaced.	

Phase-II		
Scope executed	Billing to be certified	Remarks
If 9 rows or less than 9 rows of CEs are replaced	33% of <u>Clause 2 of Section-E: Schedule of Quantities & Price</u> shall be certified for exact 9 rows replacement. Proportional if less than 9 rows replaced.	Balance items will be needed to be installed/replaced as per actual scope of work as per Clause 2 of Section-E: Schedule of Quantities & Price
If greater than 9 rows but equal to or less than 17 rows of CEs are replaced	58% of <u>Clause 2 of Section-E: Schedule of Quantities & Price</u> shall be certified for exact 17 rows replacement. Proportional if less than 17 rows & greater than 10 rows are replaced.	
If greater than 17 rows but equal to or less than 26 rows of CEs are replaced	90% of <u>Clause 2 of Section-E: Schedule of Quantities & Price</u> shall be certified for exact 26 rows replacement. Proportional if less than 26 rows & greater than 18 rows are replaced.	
If greater than 34 rows but equal or less than 26 rows of CEs are replaced	100% of <u>Clause 2 of Section-E: Schedule of Quantities & Price</u> shall be certified for exact 34 rows replacement. Proportional if less than 34 rows & greater than 27 rows are replaced.	

➤ **Clause No. B1-2 & B2-2: Inner roof replacement work (complete inner roof replacement of 1 ESP field; approx. dimensions of field 13 m x 6.5 m) - including removal & re-fixing of outer roof & affixing of new insulation wool on inner roof**

The outer roof shall be cut and shifted. Old Insulation to be removed from inner roof (the same to be lowered to ground and disposed to mines through tractors as directed by Engineer In-charge). The old inner roof including stiffeners & insulation rods/retainers to be cut and removed. New plate & material for stiffeners shall be issued to contractor for pre-fabrication of new inner roof. Installation of stiffener and its welding with plate shall be in line with BHEL's standard/ drawing as recommended by GIPCL Engineer In-charge. The shifting of new plate & stiffener materials from warehouse shall be in contractor's scope. The new pre-fabricated inner roof (with stiffeners) shall be lifted (from ground) to workplace by suitable lifting arrangement. Prepare pre-assembly with minimum welding and cutting of new pre-fabricated inner roof. New inner roof shall be properly welded to the adjacent existing plates. As the verification of quality of welding, DP test need to be carried out for 5% of length of weld randomly. If found unsatisfactory corrective action need to be taken by contractor. DPT kit to be arranged by contractor. Insulation retainers & rods to be welded to new inner roof. New insulation wool to be affixed. Outer roof to be re-affixed and total welding as described to be completed.

➤ **Clause No. B1-3 & B2-3: Field internals detailed inspection including inspection for fields alignment, rapping mechanisms & flue gas related air ingress**

- Check all the rows of CEs, shock bars, pads and shock bar guides, CERM shafts, inner arms, outer arms, plain & fixed bearings etc. and repair/replace the damaged parts if required (in case of replacement, the same shall be payable against separate execution/billing as per relevant clauses of Section-E).
- Check all the rows of EEs (all three tiers), suspension frames/bars, vertical & diagonal stays, EERM horizontal shafts (at two elevation), inner arms, outer arms, plain & fixed bearings etc. and repair/replace the damaged parts if required (in case of replacement, the same shall be payable against separate execution/billing as per relevant clauses of Section-E).
- Check the EERM vertical shaft arrangement, pin wheel-1, pin wheel-2, bearings, thrust bearings, screen tubes, shaft insulators, grip couplings, carbon bushes etc. and repair/replace the damaged parts if required (in case of replacement, the same shall be payable against separate execution/billing as per relevant clauses of Section-E).
- Collect readings of each and every parameter representing field alignment and submit the same to GIPCL for condition monitoring of existing condition of field. The field alignment where observed disturbed, shall be rectified for healthiness of the respective field.

- Shaft Alignment i.e. alignment of shock pads/EE frames with respect to hammer while CERM/EERM are in operation, shall be verified for any misalignment.
- Shaft / Support Insulators to be inspected & cleaned with petrol.
- GD screen / Ridge Plate / Dust Guard Plate to be inspected for any damage.

➤ **Clause No. B1-4 & B2-4: Complete washing and cleaning of total internals of ESPs of Units - 1,2,3 or 4 (lump-sum activity)**

Ensure the mechanical and electrical isolation of ESP field. Open all manhole doors and earth all the fields locally. There are (i) two flue gas passes in each ESP & (ii) seven (7) and eight (8) ESP fields per Pass for Phase-I & Phase-II Units' respectively. Scope here includes complete water washing of all ESP field internally, GD screen, inlet funnel & outlet funnel, collecting electrodes, emitting electrodes etc. The water washing includes cleaning of ash from collecting plate, emitting electrodes, support beams, structures & hoppers of the field. For this all the manhole doors of ESP viz. collecting rapping manhole doors, emitting rapping manhole doors, hopper manhole doors, penthouse manhole doors and GD rapping manhole doors needs to be opened. GIPCL will indicate the source point of water from nearby location. Hose pipe, other connection & nozzles required for water washing and piping from water point end to application end should be arranged by Contractor. Cleaning of shafts and support insulators are also included.

➤ **Clause No. B1-5 & B2-5: Replacement of new emitting electrode**

Check the stiffness of emitting electrodes (EE) i.e. springs at top, middle & bottom elevations in each field randomly. Remove defective emitting electrodes and replace with new electrodes. The stretching & fixing of electrodes has to be done through stretching tool only which has to be arranged by contractor. In case of old EE removed, but EE not fitted in that location, 40 % of execution shall be considered for billing.

➤ **Clause No. B1-6 & B2-6: Re-alignment of ESP field from top support insulator**

After inspection of field internals and critical dimension measurement, if observed that the whole EE frame is mis-aligned with reference to CE frame, the same is needed to be rectified by adjusting the support insulator's locking nut (situated at top at all four corners of the field in support insulator housing assembly) and / or diagonal stays in the EESS. All special tools viz. J-bolts, spanners etc. required for this correction is in the scope of contractor. Skilled execution technician shall be required to supervise the process of re-alignment. Contractor shall submit initial & final readings of all critical dimensions post field re-alignment.

➤ **Clause No. B1-7 & B2-7: Repair / Replacement of shock pad**

Identify damaged / mis-aligned shock pads. In case of replacement, remove bolts and washers of shock pad and affix new shock pad along with nut-bolting of the same. Tack welding of nut with bolts is to be done and alignment of the shock pad with reference to the hammer needs to be ensured. In case of only mis-alignment, rectify the same and re-align shock pad with respective hammer.

➤ **Clause No. B1-8 & B2-8: Repair / Replacement of shock bar or shock bar angle (ISA)**

Shock bar or angle (ISA) needs to be identified for repair/replacement if found bend and/or damaged during initial inspection. In case of heavy damage, existing shock bar needs to be detached from collecting electrodes and removed from inspection door. Replace with new one and connect the new shock bar with existing collecting electrodes. In case of slight bending of shock bar, it needs to be repaired by heating, cutting & welding. Maintain critical allowed gap between affected two rows of CEs/EEs. Measure vertical clearance between the shock bar and guide assembly and carry out necessary modifications to maintain the required gap. Ensure that alignment of each hammer is in hitting position with respective shock bars/pads. In case of damaged/old shock bar removed, from CERM MHD or Hopper MHD, but new shock bar not fitted in that location, 30% of execution shall be considered for billing.

➤ **Clause No. B1-9 & B2-9: Repair of shock bar guide rapping or non-rapping side**

Check that all the shock bar guides are aligned with shock bars. If found mis-aligned, the same needs to be rectified. If rectification is not possible, replacement of the same shall be planned. If required provide 'U' clamp and ensure that shock bars are being guided properly. If shock bar guide is detached from any end out of two ends, the same needs to be welded again with casing.

➤ **Clause No. B1-10 & B2-10: Repair/replacement of attachment ISA 75 (including strip) for shock bar guides**

Check that shock bar top angles are aligned and the pitch is being maintained between shock bars. If not found in order, correct it either by cutting some length of shock bar top angles (ISA) or welding a spool of shock bar top angle (ISA). If major worn out observed, the shock bar top angle (ISA) needs to be replaced.

➤ **Clause No. B1-11 & B2-11: Replacement/Re-erection of detached shock bar guide (rapping or non-rapping side)**

Check that both the shock bar bottom guides are aligned with shock bars. If found mis-aligned, rectify it. If rectification is not possible, replace the same as per safe & standard procedure.

In case of damaged/old shock bar bottom guide is removed, from CERM MHD or Hopper MHD, but new shock bar bottom guide is not fitted in that location, 30% of execution shall be considered for billing.

➤ **Clause No. B1-12 & B2-12: Scaffolding for ESP fields inside (both Phases), repair/replacement of GD screens (only Phase-I) & opening closing of Phase-I ESP hoppers MHDs (only Phase-I)**

For replacement/repair of shock bar guides/shock bars/shock bar angles (ISA), scaffolding needs to be erected inside ESP hoppers. Scaffolding material shall be arranged by Contractor. Erection of scaffolding involves shifting scaffolding material through hopper manhole door and installing the same as per requirement through standard practice of erection of scaffolding. Measurement of scaffolding shall be in m³ in close cubicle irrespective of length of pipes utilized. Similarly scaffolding as per requirement shall be erected for ESP fields inside work, for replacement of Gas Distributor (GD) screens and for opening of Hopper manhole doors in Phase-I Units' ESPs.

➤ **Clause No. B1-13 & B2-13: Repair/replacement of clamp bolt**

Remove hammers clamp bolts if found damaged. Tack welding needs to be done after replacement. If bolts are not observed damaged, confirm if tack welding is detached or not. If tack welding is detached, just rectify the same. If required, replace clamp bolts connected to shock bars/collecting electrodes and tack weld it if found defected.

➤ **Clause No. B1-14/B1-15 & B2-14/B2-15: Repair/replacement of screen tubes of Shaft insulators and Support Insulators**

During field inspection, if screen tube arrangement found damaged/worn-out, the whole assembly of screen tube needs to be replaced. It shall involve removal of damaged screen tubes safely without damaging other parts by cutting /grousing. Replace the assembly with new one.

➤ **Clause No. B1-16 & B2-16: Replacement of plain/fixed bearings of horizontal shafts & thrust bearings, support bearings of vertical shaft of rapping mechanisms**

This includes checking and replacement of all type of bearings, if found damaged. After replacement of bearings, tighten its bolts, tack weld the nuts and apply grease on both sides of bearing portion.

➤ **Clause No. B1-17 & B2-17: Identification of defected inner arm & outer arms (hammers) and repair/replacement of both inner arms & outer arms of either of both rapping shafts**

The hammers of outer arms of either of rapping shafts needs to be checked for play in bush and for pin looseness. Remove the damaged hammers, position the new hammer with full tightening of nuts after fitting of washer, tack weld the nuts and check the hammer for freeness and alignment with respect to the shock bar/pad. Check the hammer bolts for erosion and repair or replace it as required.

➤ **Clause No. B1-18 & B2-18: Identification and Replacement of complete assemblies of (i) emitting rapping horizontal shafts or vertical shafts (ii) gas distribution rapping shafts or (iii) collecting rapping shafts**

The emitting/collecting electrodes rapping mechanism including all its bearings, inner arms, outer arms, bearing assemblies of plain bearing are to be thoroughly inspected. Necessary repairing, modification and tack welding of clamp bolts and fixing of missing fasteners are to be done as per the instructions of Engineer In-charge. Straightness of both the shafts (horizontal & vertical) of EERM needs to be checked. Check alignment of pin-wheels arrangement, and rectify the same if required. Replace the pin-wheel(s) if required. The old damaged complete rapping shaft assembly shall be dismantled from position and shall be replaced by new shaft assembly, along with the plain bearings, inner arms, outer arms (hammers) etc. This includes joining & setting of shaft parts and fitting of new hammers with tack welding of clamp bolts. Check the freeness of shaft and all hammers and rectify the same if required. In case of partial replacement of complete assemblies of shaft(s), the proportional length of shaft shall be considered for billing.

➤ **Clause No. B1-19 & B2-19: Identification and Repair/replacement of outer arm assembly (along with hammers):**

The outer arms of either of rapping shafts for play in bush and looseness of pin at joint. Remove the damaged outer arm, position the new outer arm with full tightening of nuts after fitting of washer, tack weld the nuts and check the hammer for freeness and alignment with respect to the shock bar/pad. Check the hammer bolts for erosion and repair or replace it as required (as per above clause). Rapping shaft rotation needs to be checked and ensured that every hammer is hitting at position with the respective shock bars/pads.

➤ **Clause No. B1-20 & B2-20: Identification and Servicing/replacement of pin-wheel(s) set arrangement**

During field inspection, pin-wheel(s) arrangement if found damaged/worn-out, the assembly of pin-wheels needs to be replaced as per standard procedure. It involves removal of both pin-wheels safely by cutting /grousing and without damaging the main shafts and replace them with new assemblies and fix them.

➤ **Clause No. B1-21 & B2-21: Dismantling & removing of full-length damaged collecting electrodes from the fields (through MHD) and corresponding emitting electrodes**

Check all the collecting electrodes (plates) for detachment from shock bars at bottom portion. If collecting plates is found badly damaged at bottom & it cannot be locked, as per instructions/joint inspection with Engineer In-charge remove the complete collecting plates by cutting. Before cutting, ensure that collecting plate is secured in U clamp at top. If required, erect scaffolding for the same. Remaining collecting plates of that row should be properly locked with shock bar as per instructions of Engineer In-charge. Removal of individual collecting electrode from the field through MHD also includes removal/re-installation of affected emitting electrode.

➤ **Clause No. B1-22 & B2-22: Dismantling & removing of full-length damaged collecting electrodes (CE) rows (1 row = 6 CEs) from the fields (through roof) including removal of corresponding emitting electrodes & shock bar:**

During joint inspection of field internals, if any bundle of row(s) (or part of row) of collecting electrodes found damaged, then as per instruction of Engineer In-charge following work needs to be executed:

- Cut the outer roof of suitable size and remove insulation from top of inner roof.
- Cut the inner roof of suitable size for removal of row(s) of collecting electrode.
- Install proper/customize lifting arrangement for removal of bunch of CEs.
- Detach affected CEs from shock bar.
- Remove the bunch of CEs from the field.
- As instructed by GIPCL Engineer In-charge, replace with new collecting electrodes at these locations (in line with separate relevant clause for the same as per Section-E for replacement).
- Affix new CEs to the shock bars and verify freeness of the same. Else rectify the concerned shock bar accordingly.
- Check and verify the pitch of affected collecting electrodes suspension frames (hook to hook). If found defective, rectify the same.
- On completion of installation of CEs, maintain the standard pitch of CE to CE and CE to EE.
- Re-erect inner roof, complete the welding, affix insulation wool and re-erect the outer roof.
- Complete all the weld joints by E 7018 A1 grade electrode.
- Removal of row(s) of collecting electrodes from the ESP field(s) through roof also includes removal/re-installation of affected emitting electrodes and shock bars.
- Clear the site for all scrap generated out of work executed.
- In case partial removal for any row. Payment shall be made proportionately.

- **Clause No. B1-23 & B2-23: Installation (through roof) of full-length collecting electrodes (CE) row (1 row = 6 CEs) in the fields including installation of respective emitting electrodes (shall be considered for ESP fields other than the fields whose internals are being replaced)**

During joint inspection of field internals, if any bundle of row(s) (or part of row) of collecting electrodes found damaged, then as per instruction of Engineer In-charge following work needs to be executed:

- Cut the outer roof of suitable size and remove insulation from top of inner roof.
- Cut the inner roof of suitable size for removal of row(s) of collecting electrode.
- Install proper/customize lifting arrangement for removal of bunch of CEs.
- Transfer the bundle of CEs from the ground and place it to nearby roof area.
- Affix new collecting electrodes at the said rows identified during inspection.
- Affix new CEs to the shock bars and verify freeness of the same.
- Check and verify the pitch of affected collecting electrodes suspension frames (hook to hook). If found defective, rectify the same.
- On completion of installation of CEs, maintain the standard pitch of CE to CE and CE to EE.
- Re-erect inner roof, complete the welding, affix insulation wool and re-erect the outer roof.
- Complete all the weld joints by E 7018 A1 grade electrode.
- Installation of rows of collecting electrodes in the ESP fields also includes re-installation of affected emitting electrodes/shock bars.
- Clear the site for all scrap generated out of work executed.

- **Clause No. B1-24 & B2-24: Collecting electrodes straightening**

During joint inspection of field internals, if any individual CEs are observed bent (that may affect the field performance), then these collecting electrodes need to be rectified and straightened to the extent possible. The special tools & tackles (if applicable) required for the said rectification needs to be arranged by Contractor. Post rectification, the same to be inspected jointly.

- **Clause No. B1-25 & B2-25: Replacement of emitting electrodes rectangular sub frame(s) [of approx. size 60 mm x 40 mm x 2.5 mm thick & length 5050 mm]**

During joint inspection of field internals, if any emitting electrode sub frames is observed damaged, the same needs to be replaced with new sub frame and following works need to be carried out:

- Affected EE needs to be removed from the existing frame.
- Dismantle and remove existing frame from CERM MHD.
- Install new sub frame, align it properly with remaining part of the frame and finally weld it.
- Re-install all EEs in the sub frame(s) again.
- Clear the site for all scrap generated out of work executed.

➤ **Clause No. B1-26 & B2-26: Identification of defect and replacement of support insulator**

Support insulators, if found damaged, are to be replaced. The job involves checking of the cracked insulator, replacement of support insulator gasket if required. While replacement, the suspension bolt gaps needs to be maintained. Alignment of the field needs to be carried out by J-bolts if required (J-bolts to be arranged by Contractor). Ensure that the support insulator housing is completely cleaned and support bracket connected to the electrical bushing. Support Insulator flange cover pockets to be properly mounted with nut-bolts and gasket only and required repair to be carried out by contractor (at GIPCL workshop facility).

➤ **Clause No. B1-27 & B2-27: Identification of defect and replacement of shaft insulator**

Shaft insulator(s) if found damaged, the same needs to be replaced. Remove the EERM geared motor assembly. Clean the shaft insulators' surrounding area. Remove damaged insulator. Clean shaft insulator end (with shaft) by emery paper and affix new insulator and re-fit its locking pins. Check the alignment of the insulator with emitting rapping shaft end.

➤ **Clause No. B1-28 & B2-28: U clamp correction of CE (only re-clamping)**

During joint inspection of field internals, if any collecting electrode is observed dislocated from U clamp, the same shall be re-locked to the respective clamp.

➤ **Clause No. B1-29: Replacement/Repair of inlet GD screens (1 No. = 1 screen sheet of total approx. length 11000 mm) – for Phase-I only**

All around approach scaffolding for inlet GD screens (of both passes) shall be erected and scaffolding shall also be erected for inspection & repair between two screens also at inlet funnel area. Joint inspection of inlet GD screens (of both passes) at the start of AOH shall be carried out. Diagrammatic chart/report comprising of existing set up of dummy plate / divergent plate and its relative location and regarding damaged screen including divergent & dummy plate to be submitted. As per joint inspection and as directed by Engineer In-charge, contractor shall augment manpower and resources for dismantling of old/damaged inlet GD screen elements, shift the new inlet GD screen elements up to inside ESP casing, replace the same with the old/damaged inlet GD screen elements, complete the fit-up and requisite

welding, ensure alignment of new inlet GD screen elements with existing GD rapping mechanism, dismantle and remove the scaffolding.

- **Clause No. B1-30: Replacement/Repair of outlet GD screen (1 No. = 1 screen sheet of total approx. length 9500 mm) – for Phase-I only**

All around approach scaffolding for outlet GD screens (of both passes) shall be erected. Joint inspection of outlet GD screens (of both passes) at the start of AOH shall be carried out. As per joint inspection and as directed by Engineer In-charge, contractor shall augment manpower and resources for dismantling of old/damaged outlet GD screen elements, shift the new outlet GD screen elements up to inside ESP casing, replace the same with the old/damaged outlet GD screen elements, complete the fit-up and requisite welding, ensure alignment of new outlet GD screen elements, dismantle and remove the scaffolding.

- **Clause No. B1-31 & B1-32: Installation/replacement/repair of divergent & dummy plates of inlet GD screens**

All around approach scaffolding for inlet GD screens (of both passes) and between two screens shall already been erected for inspection at inlet funnel area. As per the joint inspection and diagrammatic chart/report of existing set up of dummy plate / divergent plate and its relative location and regarding damaged/missing divergent & dummy plate submitted by contractor, they shall execute and proceed for installation/replacement of new/existing divergent & dummy plates.

- **Clause No. B1-31 & B2-29 Replacement of deflector plates/dust guards/side sealings;**
- **Clause No. B1-32 & B2-30 Replacement of ridge plate (200 mm width) along with respective ridge**
- **Clause No. B1-33 & B2-31: Replacement of ridge plate (400 mm width) along with respective ridge**

As per joint inspection and as directed by Engineer In-charge, contractor shall augment manpower and resources for dismantling of old/damaged dust guards/side sealings/ridges plates/lateral ridges and installation/replacement (whichever applicable) of dust guards/side sealings/ridges plate of 200 mm width/ridge plate of 400 mm width/lateral ridges shall be executed.

- **Obligations of contractor:**
- **Entire work of execution of ESP fields internals replacement shall be carried out under the supervision of service engineer of supply agency and GIPCL Engineer In-charge. Contractor shall have to work as per instructions of service engineer of supply agency**

and GIPCL Engineer In-charge so as to fulfill all technical requirements and execute the work with desired quality and prudent engineering standards / practices.

- Contractor shall be ready for parallel working that shall be executed between two agencies. i.e. the ESP field internals replacement work during annual overhauling of boilers will be under execution along with the flue gas ducts / ESP casings – both CERM side and NCERM side air ingress attending work by plate patch-up which shall being carried out by another agency during the same AOH for the same ESP/ducts.
- Contractor shall be prepared for any minor modifications that needs to be done for the fitment of spares which are provided by GIPCL, pertaining to execution of fields internals replacement without incurring any cost implication to GIPCL. As per requirement, the provided spares to Contractor to be modified at site for proper fitting before final installation. Post installation, the site to be cleared for all scrap generated out of work executed. Balance un-used material shall be returned to warehouse be deploying adequate resources.
- Shifting / transportation of all the spares / other materials (including bundles of CEs shifting), required to repair/replace the ESP fields internals, from GIPCL ware house to respective ESP site and from ESP site up to the point of installation inside ESP casing shall be in contractor's scope.
- After joint inspection of each field, work shall be started after due clearance from GIPCL Engineer In charge for each field separately.
- Contractor shall submit intermittent work progress, field internal inspection report, issued spare consumption report, man power resource report, tools tackles report etc. from time to time as demanded by GIPCL Engineer In-charge. Submit final inspection micro level & macro level report unit wise/station wise.
- **Air load test:** After completion of all repairing / replacement work all fields of Unit to be charges. At the time of charging all fields to be set at charge ratio 1 and all field need to generate maximum possible Secondary Voltage (KV) @ maximum/rated Secondary current (mA) with minimum spark per minute. Air may charge through respective pass by running ID fan to check conformity of low spark with air charge. If maximum Secondary current not reached due to sparking. Field need to re-inspect and corrective action need to be taken by contractor.
- Contractor shall cover the guarantee for complete execution workmanship pertaining to the field's erection & commissioning for complete scope of execution i.e. four (4) ESP fields and satisfactory performance of the ESP fields as per standard and rated parameters.

➤ **Procedure for Air Load Test:**

Air load test is an important commissioning activity. This test gives the diagnosis of the following:

- Proper erection and alignment of field internals as well as the healthiness of attended renovated field.
- Presence of any left-out debris/hanging pieces, which may limit the voltage or short the electrodes.
- Healthiness of insulators.
- Healthiness of transformers and electronic controllers.
- Preparations:
 - Remove all temporary earth connections made with discharge rods.
 - Close all insulator housing, disconnecting switch and inspection doors adopting the interlock sequence and return the key to the electronic controller.
 - Check the IR value of individual fields using 1 KV megger. Megger shall be done between earth and emitting system at disconnecting switch keeping the moving blade in between the two fixed contacts.
- Procedure:
 - Make supply available to ACPs and ECs. Ensure switching on of all heaters 4 hours prior to taking up of air load test.
 - Switch on all rapping motors on continuous mode.
 - Keep Intermittent Charge Ratio =1:1 and Im=100% in BAPCON.
 - Switch on EC and slowly raise the current by increasing Is. Note the meter readings for each interval of 50 mA. Raise up to rated current. Look for flashover if any and record.
 - The rapping motors are to be changed to intermittent rapping mode after taking the voltage & current readings.
 - Keep all the fields energized for a period of 8 hours.
 - Switch off the ECs, ACPs and LT board.
 - If the fields are properly erected and aligned, they can be loaded up to the rated current without sparks.

GIPCL have made a genuine attempt to furnish the complete details pertaining to required services for the erection & commissioning of ESP fields to the extent possible. Bidder to note that Section-D: Special Conditions of Contract (specified above) and Section-E: Schedule of Quantities & Price shall not be treated as exhaustive list. While quoting, Bidder shall also take in to consideration, the execution of services pertaining to the ESP fields internals replacement & overhauling that may be necessary to execute the work, but may not be listed therein shall be part of scope of work under this contract.

2.1 FAILURE DURING EMERGENCY

During any emergencies, contractor shall have to carry out the work by deploying additional force within seven (7) days from intimation of GIPCL's Engineer In-charge, failing which GIPCL

reserves the right to carry out this work by engaging other party. For the expenditure occurred due to such situation, the Contractor will be held responsible & the same will be recovered from the Contractor's monthly bill / any other pending bills along with 10% overhead charges plus applicable GST as per extant GST laws.

For repetitive failure of such work for more than two incidents, GIPCL reserve the right to terminate the entire contract by forfeiting all pending dues, Security Deposit & other retention money, if any, after giving 15 days notice to the contractor & this will be binding to the contractor.

2.2 SCOPE OF CONTRACTOR

1. All tools & tackles, equipments, machinery etc. to execute the contract will be in the scope of the contractor. The contractor should ensure for healthiness / working conditions of tools & tackles, equipments, machinery etc.
2. All consumable items like cloth, cotton waste, kerosene, cutting gases, welding electrodes, grinding & cutting wheels, emery papers, lighting appliances, diesel, lubricants, etc. will be in the scope of the contractor.
3. All safety/PPEs required during work at site are to be arranged by the contractor.
4. The Contractor shall have to provide necessary facilities including accommodation for their labour at their own cost outside plant premises.
5. The contractor has to arrange vehicles, machineries, equipments etc. for lifting/shifting of the materials of their own.
6. Contractor has to depute experienced Site In-charge & Supervisors for work execution as per specification and for day to day work planning & coordination with Engineer In-charge of GIPCL, to obtain day to day work permits, to get daily thorough work supervision, to record joint work done reports/measurements, to prepare bills, to prepare & apply manpower gate pass, to maintain statutory & legal compliance records etc.

2.3 TO REMEDY DEFECTIVE WORK

If the work or any portion thereof shall be damaged in any way excepting by the acts of the GIPCL, or if defects not readily detected by proper inspection shall develop before the final completion and acceptance of the whole work, the Contractor shall forthwith make good, without compensation, such damage or defects in a manner satisfactory to the Engineer In-charge / GIPCL. In no case shall defective or imperfect work be retained even if Contractor followed all technical specifications. GIPCL will not compromise for quality of materials, works & workmanship.

The Contractor shall remain liable under the provisions of this clause notwithstanding the passing by the GIPCL of any certificate, final or otherwise or the passing of any accounts.

2.4 DEFECT LIABILITY PERIOD

The Contractor shall stand guarantee for any defect found in the workmanship for the period of twelve (12) months from the date of work completion (i.e. commissioning of field) and shall re-do or repair the same free of cost to demonstrate the performance of the works carried out. Further, contractor shall not be liable for any workmanship guarantee when arise due to defect in GIPCL supplied material.

2.5 WORK PROGRESS REPORT / WORK PROTOCOL:

The Contractor shall provide information regarding spares requirement and progress of work, as required by the Engineer In-charge for compiling the progress reports / work protocols. On completion of work, contractor have to submitted detail work report carried out during work execution with photographs of condition before & after work execution. Reconcile the spares issued by GIPCL during course of work execution and return of surplus spares back to GIPCL warehouse with material return voucher generated by Engineer In-charge.

3. PRICE & RATES

The rates quoted by the Bidder in the online Price Bid shall be inclusive of cost of all labour, supervision, cost of safety supervisor, shifting, transportation, loading, unloading, equipment, all tools & tackles, safety equipments & PPEs, royalties, rents, GST, stamp duties, central or state government or local body or municipal taxes or duties, turn-over tax, work contract tax, and / or any other duty / tax, levied by the central, state government or other public bodies etc. and such other costs that are not specifically mentioned herein but will be incurred by the contractor for the satisfactory and timely completion of the work. The quoted rates shall be deemed to include for everything mentioned in the specification, all leads & lifts, contractor's overheads & profits for due performance of the work under this contract and such other costs that are not specifically mentioned herein but will be incurred by the contractor for the satisfactory and timely completion of the work. The rates shall also include cost for mobilization / demobilization of manpower, equipments, materials, etc.

The rates shall be firm for entire contract period and also during extension, if required and shall not be subject to any escalation in prices, idle charges for labour, machinery, overhead expenses etc. No price escalation / idle charges shall be due to any reason whatsoever.

The prices / item rates quoted by Bidder shall remain firm till completion of the contract period and any agreed extensions thereafter and shall not be subject to any other escalation, idle charges for labour, machinery, overhead expenses etc. No price escalation / idle charges shall be payable due to delay in work by contractor or due to non-availability of work front by GIPCL or any reason whatsoever.

The price / rate quoted by Contractor shall be considering mobilization of all required manpower, tools & tackles, materials, equipment for timely and satisfactory completion of all scope of work.

The value and/or quantum of work may be increased or decreased depending upon day to day requirement. However, item rates remain unchanged and the payment shall be made as per the actual quantity executed as informed & certified by GIPCL representatives.

4. TERMS OF PAYMENT

A. Conditions of Payment:

On receipt of the invoice complete in all respects and with all the required documents, the payment in respect of the same shall be made within 21 days of such receipt of a complete invoice as per the following terms of payment:

- (i) 95% payment along with taxes and duties against the work executed duly certified by GIPCL Engineer In-charge and on submission of invoices complete in all respects along with the detailed & duly signed joint work protocols. Income Tax (IT) will be deducted at source from invoice as per the rules in force.
- (ii) 5% payment shall be deducted from invoice as retention amount against clearing of all type of scrap from site and work area and the said amounts against respective invoices shall be paid on certification of Engineer In-charge for site cleared from all type of scrap.
- (iii) GST shall be paid along with bills after fulfillment of following terms:
 - (a) Submission of copy of registration certificate issued by GST authority (to be furnished only once).
 - (b) Citing the Goods and Service Tax (GST) Registration no. And the date of issue of registration certificate on invoices.
 - (c) Claim of GST amount with percentage (%) separately shown on the invoices.
 - (d) The Contractor shall be required to submit the proof of payment of GST of previous month/quarter, as may be applicable as & when demanded by GIPCL/Owner/ Company.

- (e) The contractor shall also mention on their invoice the HSN/SAC code as applicable under the GST laws under which GST is levied and a self-certified authentic third-party evidence (www.cbic-gst.gov.in) shall be adduced, one time, to that effect by the vendor.
- (iv) While making payment, the following deductions may be made by GIPCL, if applicable:
 - 1. Recoveries of chargeable resources provided, if any, by GIPCL.
 - 2. Liquidated damages/penalties, as specified in the tender document, for delayed/inadequate mobilization of resources, delayed execution of work, recoveries against work executed by other contractor due to delay or any other reason etc. if applicable.
 - 3. Security deposit recoverable if any.
 - 4. Any other dues recoverable by GIPCL from the contractor as per terms and conditions of contract.
- (v) The Contractor shall submit his Final Bill within a period of four (4) months of the expiration or earlier termination of the contract or any extensions that may be granted by GIPCL to the Contractor. GIPCL shall not entertain any bill for any work item after expiration of period of four (4) months.
- (vi) The Contractor shall include all his claims in the Final Bill submitted by him and accordingly the final bill submitted by the Contractor shall be deemed to be inclusive of all and whatsoever the claims that the Contractor may have from GIPCL. The Contractor shall not be entitled to claim any amounts which are not mentioned in the Final Bill and the Contractor shall be deemed to have waived any claims not mentioned in the Final Bill and shall not be entitled to recover the same from GIPCL subsequent to the submission of the Final Bill on any account and GIPCL shall stand absolved of all its liabilities in respect of any such claims not raised by the Contractor in his Final Bill.

B. Validity and Uniformity of Rates

The rates shall be firm and valid for the period of one (1) year of the Contract Period, and for any extensions to the contract period thereof.

5. SUBMISSION OF TECHNICAL DOCUMENTS TO THE ENGINEER IN-CHARGE:

Contractor shall submit following documents to the Engineer In-charge for verification purpose of the invoice:

- Measurement sheets along with joint record of work done in the form of joint inspection report/protocols duly signed by authorized representative of Contractor and GIPCL's Engineer In-charge.

- Report of Field Overhauling activities.
- Protocols of work executed.

The Invoice will not be entertained without submission of above documents.

6. SUBMISSION OF STATUTORY COMPLIANCES WITH FINAL RA BILL:

- (i) No claim - No arbitration certificate as per Proforma at Annexure-C in Section-F, after the final bill amount is certified by GIPCL for payment and the same is made known to the contractor by GIPCL & accepted by the contractor.
- (ii) Notarized Indemnity Bond as per Annexure-G in Section-F.

Bill submitted without any of the above documents shall not be processed for payment.

7. MOBILIZATION AND EXECUTION

- a. GIPCL shall intimate for the mobilization of manpower along with tools & tackles in case of Annual Overhauling (AOH) of Unit(s). The Contractor shall mobilize the manpower along with all required tools and tackles, within seven (7) days of intimation.
- b. Contractor shall provide adequate supervisor(s) who will be responsible for supervision and execution of job in specified time with respect to quality, specifications, site preparations, safety, co ordination with GIPCL, joint measurements etc. The supervisors shall coordinate with the Engineer In-charge of GIPCL for proper execution of the job.
- c. The resources required for execution of above jobs will vary from time to time, hence Contractor shall mobilize the resources accordingly.
- d. The Contractor shall have to provide necessary facilities including accommodation for their labour at their own cost outside plant premises.

8. QUANTITY OF WORK

The estimated quantities of work required to be carried out by the Contractor are as given in the Section-E: Schedule of Quantities and Price. These quantities are estimated and shall vary according to the exigencies of work at site. However, the rates quoted by Bidder shall remain firm irrespective of any variation in estimated quantities. Contractors shall engage required nos. of workmen along with required tools & tackles as per work load and emergency situations throughout the contract period to perform his contractual duties.

In case, contract quantity / amount exhausted before completion of contract period, GIPCL reserve the rights to increase the quantities or contract amount for successful completion of entire contract period. Contractor shall responsible to complete the particular job up to entire satisfaction of Engineer In-charge. The item rates remain firm & unchanged till completion of

the contract and any agreed extensions thereafter and shall not be subject to any escalation, idle charges for labour, machinery, equipment, overhead expenses etc. for any reason whatsoever. The quantum of work of individual item may be up to any extent depending upon requirement. However, item rate remains unchanged. Under this contract, Contractor has to execute all work as per the Plant requirement.

9. GENERAL CONDITIONS OF CONTRACT

General Conditions of Contract (Section-C) and detailed specification prepared by the company will be applicable for this contract. The same is enclosed herewith. Bidders are advised to go through the same.

Where any portion of the General Conditions of Contract is repugnant to or at variance with any provisions of the Special Conditions of Contract, then unless a different intention appears, the provision of the Special Conditions of Contract shall prevail to the extent of such repugnancy of variance.

SECTION – E

Schedule of Quantities and Price

➤ **Schedule B1 - Mechanical execution in Phase-I: ESP Fields Replacement with Pitch Conversion & Overhauling:**

Sr. No.	Item description	Estimated Qty. for Phase-I	UoM	Estimated Unit Rates (Rs. excl. GST)	Estimated amount excl. GST (Rs.)
1	Field internals replacement - all/partial working internals replacement in Phase-I i.e. Units-1 & 2 as specified in scope of work with pitch conversion	2	per Field	25,79,800.84	51,59,601.67
2	Inner roof replacement work (complete inner roof replacement of 1 ESP field; approx. dimensions of field 13 m x 6.5 m) - including removal & re-fixing of outer roof & affixing of new insulation wool on inner roof	2	per Field	1,63,075.69	3,26,151.37
3	Field internals detailed inspection including inspection for fields alignment, rapping mechanisms & flue gas related air ingress - for identifying repair/ maintenance requirement (1 No. = 1 field inspection)	26	No.	3,681.36	95,715.46
4	Complete washing and cleaning of total internals of ESPs of U1,2,3 or 4 (1 Qty = complete washing of both passes of an ESP)	4	per ESP	60,805.72	2,43,222.86
5	Replacement of new emitting electrode	250	No	70.40	17,599.45
6	Re-alignment of ESP field from top support insulator	4	No	60,805.72	2,43,222.86
7	Replacement of shock pad	100	No	283.09	28,308.90
8	Replacement of shock bar or shock bar angle	25	No	1,620.65	40,516.17
9	Repair of shock bar guide rapping or non-rapping side	4	No	4,863.44	19,453.76
10	Repair/replacement of attachment ISA 75 (including strip) for shock bar guides	20	m	2,228.76	44,575.28
11	Replacement/Re-erection of detached shock bar guide (rapping or non-rapping side)	3	No	14,593.31	43,779.94
12	Scaffolding for ESP fields inside, repair/replacement of Phase-I GD screens & opening closing of Phase-I ESP hoppers MHDs	2,320	m ³	244.15	5,66,417.62
13	Replacement of clamp bolt	200	No	61.41	12,282.17
14	Replacement of screen tubes (shaft insulator)	5	No	2,433.97	12,169.83
15	Replacement of screen tubes (support insulator)	2	No	2,433.97	4,867.93

Sr. No.	Item description	Estimated Qty. for Phase-I	UoM	Estimated Unit Rates (Rs. excl. GST)	Estimated amount excl. GST (Rs.)
16	Replacement of plain/fixed bearings of horizontal shafts & thrust bearing, support bearing of vertical shaft	120	No	606.62	72,794.31
17	Identify defected inner arm & outer arms (hammers) and repair/replace of both inner arms & outer arms of either of rapping shafts	300	Set	281.67	84,499.81
18	Replacement of complete assemblies including plain bearings/fixed bearings, inner & outer arms etc (if partially replaced proportional lengths to be considered) (i) emitting rapping horizontal shafts or vertical shafts, or (ii) gas distribution rapping shafts, or (iii) collecting rapping shafts	3	No	24,323.19	72,969.56
19	Identifying defected outer arm and repair/replacement of outer arm	100	No	215.69	21,568.68
20	Identifying defect and servicing/replacement of pin-wheel(s) set arrangement	3	Set	3,040.59	9,121.76
21	Dismantling & removing of full-length damaged collecting electrodes from the fields (through MHD) and corresponding emitting electrodes	50	No	1,458.88	72,944.09
22	Dismantling & removing of full-length damaged collecting electrodes (CE) rows (1 row = 6 CEs) from the fields (through roof) including removal of corresponding emitting electrodes & shock bar	45	Row	8,025.35	3,61,140.66
23	Installation (through roof) of full-length collecting electrodes (CE) row (1 row = 6 CEs) in the fields including installation of respective emitting electrodes (to be considered for fields other than the fields whose internals are being replaced)	10	Row	10,946.11	1,09,461.07
24	Collecting electrodes straightening	50	No	546.71	27,335.31
25	Replacement of emitting electrode rectangular sub frame of approx. size 60 mm x 40 mm x 2.5 mm thick & length 5050 mm	25	No	2,433.97	60,849.15
26	Identifying defect and replacement of support insulator	10	No	12,160.84	1,21,608.44
27	Identifying defect and replacement of shaft insulator	5	No	2,433.97	12,169.83
28	U clamp correction of CE (only re-clamping)	150	No	113.83	17,075.21

Sr. No.	Item description	Estimated Qty. for Phase-I	UoM	Estimated Unit Rates (Rs. excl. GST)	Estimated amount excl. GST (Rs.)
29	Replacement/Repair of inlet GD screens (1 No. = 1 screen sheet of total approx. length 11000 mm)	25	No	5,029.70	1,25,742.43
30	Replacement/Repair of outlet GD screen (1 No. = 1 screen sheet of total approx. length 9500 mm)	25	No	3,055.56	76,389.09
31	Replacement/Repair of divergent plate of GD screen	200	No	437.36	87,473.00
32	Replacement/Repair of dummy plate of GD screen	100	No	184.23	18,423.25
33	Replacement of deflector plates/dust guards/side sealings	150	m	828.30	1,24,244.61
34	Replacement of ridge plate (200 mm width) along with respective ridge	100	m	534.72	53,472.36
35	Replacement of ridge plate (400 mm width) along with respective ridge	50	m	802.83	40,141.72
sub-total for services - Mechanical execution for Phase-I (excluding GST)					84,27,309.63

➤ **Schedule B2 - Mechanical execution in Phase-II: ESP Fields Replacement & Overhauling:**

Sr. No.	Item description	Estimated Qty. for Phase-I	UoM	Estimated Unit Rates (Rs. excl. GST)	Estimated amount excl. GST (Rs.)
1	Field internals replacement - all/partial working internals replacement in Phase-II i.e. Units-3 & 4 as specified in scope of work	2	per Field	14,16,239.60	28,32,479.20
2	Inner roof replacement work (complete inner roof replacement of 1 ESP field; approx. dimensions of field 13 m x 6.5 m) - including removal & re-fixing of outer roof & affixing of new insulation wool on inner roof	2	per Field	1,59,489.50	3,18,979.00
3	Field internals detailed inspection including inspection for fields alignment, rapping mechanisms & flue gas related air ingress - for identifying repair/maintenance requirement (1 No. = 1 field inspection)	8	No.	3,600.41	28,803.26

Sr. No.	Item description	Estimated Qty. for Phase-I	UoM	Estimated Unit Rates (Rs. excl. GST)	Estimated amount excl. GST (Rs.)
4	Complete washing and cleaning of total internals of ESPs of U1,2,3 or 4 (1 Qty = complete washing of both passes of an ESP)	2	per ESP	59,468.54	1,18,937.08
5	Replacement of new emitting electrode	250	No	68.85	17,212.42
6	Re-alignment of ESP field from top support insulator	4	No	59,468.54	2,37,874.17
7	Replacement of shock pad	100	No	276.86	27,686.36
8	Replacement of shock bar or shock bar angle	25	No	1,585.01	39,625.19
9	Repair of shock bar guide rapping or non-rapping side	4	No	4,756.49	19,025.95
10	Repair/replacement of attachment ISA 75 (including strip) for shock bar guides	20	m	2,179.75	43,595.03
11	Replacement/Re-erection of detached shock bar guide (rapping or non-rapping side)	3	No	14,272.39	42,817.17
12	Scaffolding for ESP fields inside, repair/replacement of Phase-I GD screens & opening closing of Phase-I ESP hoppers MHDs	1000	m ³	238.78	2,38,776.54
13	Replacement of clamp bolt	200	No	60.06	12,012.07
14	Replacement of screen tubes (shaft insulator)	5	No	2,380.44	11,902.20
15	Replacement of screen tubes (support insulator)	2	No	2,380.44	4,760.88
16	Replacement of plain/fixed bearings of horizontal shafts & thrust bearing, support bearing of vertical shaft	120	No	593.28	71,193.49
17	Identify defected inner arm & outer arms (hammers) and repair/replace of both inner arms & outer arms of either of rapping shafts	300	Set	275.47	82,641.58
18	Replacement of complete assemblies including plain bearings/fixed bearings, inner & outer arms etc (if partially replaced proportional lengths to be considered) (i) emitting rapping horizontal shafts or vertical shafts, or (ii) gas distribution rapping shafts, or (iii) collecting rapping shafts	3	No	23,788.30	71,364.89
19	Identifying defected outer arm (hammers) and repair/ replacement of outer arm	100	No	210.94	21,094.37

Sr. No.	Item description	Estimated Qty. for Phase-I	UoM	Estimated Unit Rates (Rs. excl. GST)	Estimated amount excl. GST (Rs.)
20	Identifying defect and servicing/replacement of pin-wheel(s) set arrangement	3	Set	2,973.72	8,921.16
21	Dismantling & removing of full-length damaged collecting electrodes from the fields (through MHD) and corresponding emitting electrodes	20	No	1,426.80	28,535.99
22	Dismantling & removing of full-length damaged collecting electrodes (CE) rows (1 row = 6 CEs) from the fields (through roof) including removal of corresponding emitting electrodes & shock bar	35	Row	7,848.86	2,74,710.21
23	Installation (through roof) of full-length collecting electrodes (CE) row (1 row = 6 CEs) in the fields including installation of respective emitting electrodes (to be considered for fields other than the fields whose internals are being replaced)	10	Row	10,705.39	1,07,053.92
24	Collecting electrodes straightening	50	No	534.68	26,734.18
25	Replacement of emitting electrode rectangular sub frame of approx. size 60 mm x 40 mm x 2.5 mm thick & length 5050 mm	25	No	2,380.44	59,511.02
26	Identifying defect and replacement of support insulator	10	No	11,893.42	1,18,934.15
27	Identifying defect and replacement of shaft insulator	5	No	2,380.44	11,902.20
28	U clamp correction of CE (only re-clamping)	150	No	111.33	16,699.71
29	Replacement of deflector plates/dust guards/side sealings	150	m	810.08	1,21,512.35
30	Replacement of ridge plate (200 mm width) along with respective ridge	100	m	522.96	52,296.46
31	Replacement of ridge plate (400 mm width) along with respective ridge	50	m	785.18	39,258.96
sub-total for services - Mechanical execution for Phase-II (excluding GST)					51,06,851.18

➤ **Summary for Schedules B1 & B2:**

Sr. No.	Item description	Estimated amount excl. GST (Rs.)
1	Schedule B1: Mechanical execution in Phase-I: ESP Fields Replacement with Pitch Conversion & Overhauling	84,27,309.63
2	Schedule B2: Mechanical execution in Phase-II: ESP Fields Replacement & Overhauling	51,06,851.18
sub-total of Mechanical execution for Phase-I & Phase-II (excluding GST)		1,35,34,160.81
GST @ 18% (as per present applicable rates)		24,36,148.95
Grand Total of Mechanical execution for Phase-I & Phase-II (including 18% GST)		1,59,70,309.75

Notes:

1. The quoted rates by Bidders shall include all labour cost, equipments, supervision, consumables, tools, tackles, all taxes & duties (exclude GST, which shall be paid as per extant GST laws).
2. All required erection & commissioning activities, not mentioned above, but may be required for complete work execution shall be in Contractors' scope.
3. **Bidder shall have to quote the rates in the form of percentage (%) i.e.**

AT the Estimated Contract value OR

_____ % BELOW the Estimated Contract value OR

_____ % ABOVE the Estimated Contract value

SECTION - F

LIST OF ANNEXURE & FORMS

ANNEXURE – A

PROFORMA FOR CONTRACT SECURITY-CUM-PERFORMANCE GUARANTEE BY SELLER / CONTRACTOR (To be executed on non-judicial stamped paper of approximate value)

B. G. No. _____ Date: _____

1. WHEREAS Gujarat Industries Power Company Limited having its office at PO: Ranoli, Dist. Vadodara – 391 350, Gujarat State, India (hereinafter referred to as “The Company/Owner” which expressions shall unless repugnant to the subject or context includes its legal representatives, successors and assigns) has entered into a contract with M/s _____/ has placed a purchase order on M/s _____ (hereinafter referred to as “Contractor(s)/ Seller(s)” which expression shall unless repugnant to the subject or context includes their legal representatives, successors and assigns) for _____ on the terms and conditions as set out inter alia, in the Company’s contract No. / P. O. No _____ date _____ and various documents forming part thereof hereinafter referred to as the “said contract” which expression include all amendments, modifications and/or variations thereto and where as the Contractor(s)/Seller(s) has agreed for due execution of the entire contract and guarantees its performance including any parts executed through any other agencies / subcontractors.

AND WHEREAS one of the conditions of the “said contract” is that “contractor(s)/ seller(s) shall furnish to the owner a Bank Guarantee from a bank for ____% (____ percent) of the total value of the “said contract” against due and faithful performance of the “said contract” including performance guarantee obligations of the contractor(s)/seller(s) for execution/supplies made under the “said contract.”

2. We _____ Bank having its branch office at _____ do hereby agree and undertake to pay the amount due and payable under this guarantee without any demur merely on a demand from the Company stating that in the opinion of the Company, which is final & binding, the amount claimed is due by reason of default made by the Contractor(s)/ Seller(s) in performing any of the terms & conditions of the said Contract including defect liability obligations, in fulfilling the performance guarantee obligation or loss or damage caused to or would be caused to or suffered by

the Company by reason of any breach by the said Contractor (s)/ Seller(s) of any of the terms & conditions of the contract. Any such demand made on the Bank by the owner shall be conclusive as regards the amount due and payable by the Bank under this guarantee. However, our liability under this guarantee shall be restricted to Rs. _____ (Rupees _____ only).

3. We undertake to pay to the Company any money so demanded not withstanding any dispute or disputes raised by the contractor(s)/ Seller(s) in any suit or proceeding pending before any office, court or tribunal relating thereto our liability under this present guarantee being absolute and unequivocal. The payment so made by us under this bond shall be a valid discharge of our liability for payment there under. Our liability to pay is not dependent or conditional on the owner proceeding against the Contractor(s)/ Seller(s).
4. The guarantee herein contained shall not be determined or affected or suspended by the liquidation or winding up, dissolution or change of constitution or insolvency of the said Contractor(s)/ Seller(s) but shall in all respect and for all purposes be binding and operative until payment of all money due or liabilities under the said contract(s)/ Order(s) are fulfilled.
5. This guarantee will remain valid up _____ days or _____ whichever is earlier. The Bank undertakes not to revoke this guarantee during its currency without previous consent of the OWNER/PURCHASER and further agrees that if this guarantee is extended for a period as mutually agreed between bidder & owner/purchaser, the guarantee shall be valid for a period so extended provided that a written request for such extension is received before the expiry of validity of guarantee.
6. We _____ Bank further agree with the Company that the company shall have the fullest liberty without our consent and without affecting in any manner our obligations hereunder to vary any of the terms and conditions of the said Contract(s)/ Order(s) or to extend the time of performance by the said Contractor(s) Seller(s) from time to time or to postpone for any time or from time to time any of the powers exercisable by the Company against the said Contractor(s)/ Seller(s) and to forbear or enforce any of the terms and conditions relating to the said Contract(s)/ Order(s) and we shall not be relieved from our liability by reason of any such variation, or extension being granted to the said Contractor (s) / Seller(s) or for any forbearance, act or omission on the part of the Company or any indulgence by the Company to the said Contractor(s)/ Seller(s) or by any such matter or thing whatsoever which under the law relating to sureties would, but for this provision, have affect of so relieving us.
7. Notwithstanding anything contained herein before, our liability shall not exceed Rs.

_____ (Rupees _____ only) and shall remain in force till _____
Unless a demand or claim under this Guarantee is made on us within three months from the date of expiry we shall be discharged from all the liabilities under this guarantee.

Date _____
Corporate Seal of the Bank

_____ Bank
By its constitutional
Attorney Signature of
duly authorized person
On behalf of the Bank
With Seal & Signature code

ANNEXURE - B

PROFORMA FOR BANK GUARANTEE FOR EARNEST MONEY DEPOSIT

(To be executed on non-judicial stamped paper of appropriate value)

B.G. No. _____ Date: _____

1. WHEREAS M/s. Gujarat Industries Power Company Limited having its Corporate Office at PO: Ranoli, Dist. Vadodara – 391 350, Gujarat State, India (hereinafter called “The Company Owner” which expression shall unless repugnant to the subject or context includes its legal representatives, successors and assigns) has issued tender paper vide its Tender No. _____ for _____ (hereinafter called “the said tender”) to M/s _____ (hereinafter called the said Tenderer(s)” which expression shall unless repugnant to the subject or context includes their legal representatives, successors and assigns and as per terms and conditions of the said tender, the tenderer shall submit a Bank guarantee for Rs. _____ (Rupees _____ only) towards earnest money in lieu of cash.
2. We _____ Bank having its branch office at _____ do hereby undertake to pay the amount due and payable under this guarantee without any demur, merely on a demand from the Company stating that in the opinion of the company which is final and binding, the amount claimed is due because of any withdrawal of the tender or any material alteration to the tender after the opening of the tender by way of any loss or damage caused to or would be caused or suffered by the Company by reason of any breach by the said tenderer(s) of any of the terms and conditions contained in the said tender or failure to accept the letter of Intent Agreement or that the amount covered under this Guarantee is forfeited. Any such demand made on the Bank by the owner shall be conclusive as regards the amount due and payable by the Bank under this guarantee, However, our liability under this guarantee shall be restricted to an amount not exceeding Rs. _____ (Rupees _____ only).
3. We undertake to pay to the Company any money so demanded not withstanding any dispute or disputes raised by the tenderer (s) in any suit or proceeding pending before any office, court or tribunal relating thereto our liability under this present guarantee being absolute and unequivocal. The payment so made by us under this bond shall be a valid discharge of our liability for payment there under. Our liability to pay is not dependent or conditional on the owner proceeding against the tenderer.
4. The guarantee herein contained shall not be determined or affected or suspended by the liquidation or winding up, dissolution or change of constitution or insolvency of the

said tenderer(s) but shall in all respect and for all purposes be binding and operative until payment of all money due or liabilities under the said contract(s)/ Order(s) are fulfilled.

5. We _____ Bank Ltd. further agree that the guarantee herein contained shall remain in full force and effect during the period that would be taken for the finalization of the said tender and that it shall continue to be enforceable till the said tender is finally decided and order placed on the successful tenderer(s) and or till all the dues of the company under or by virtue of the said tender have been fully paid and its claims satisfied or discharged or till a duly authorized officer of the company certifies that the terms and conditions of the said tender have been fully and properly carried out by the said tenderer (s) and accordingly discharges the guarantee.
6. That the Owner Company will have full liberty without reference to us and without affecting this guarantee to postpone for any time or from time to time the exercise of any of the power of the owner under the tender.
7. Notwithstanding anything contained herein before, our liability shall not exceed Rs. _____ (Rupees _____ only) and shall remain in force till _____ (Date to be filled up shall be 180 days from the date of submission of Bid).

Date _____
Corporate Seal of the Bank

_____ Bank
By its constitutional Attorney
Signature of duly Authorized person
On behalf of the Bank
With Seal & Signature code

ANNEXURE-C

Proforma Certificate (No claim, No arbitration)

To,
Addl. General Manager (O&M) - SLPP
Gujarat Industries Power Company Limited,
Surat Lignite Power Plant,
Village: Nani Naroli, Ta. Mangrol,
Dist. Surat – 394110 (Gujarat).

Subject: _____

Ref: Work Order No.: _____ dated _____

Dear Sir,

We hereby confirm with free consent as under: -

1. The measurements certified in final bill are full and final. We accept all the certified measurements and no claim related to the measurement is left.
2. The payment certified in that or above referred Lol / contract is full and final. We accept this, and no claim related to payment is left.
3. The rates of the Lol / contract and its amendments are firm till completion of contract and extension period. We shall not claim any escalation against these rates.
4. Along with the contract referred, the ARBITRATION CLAUSE also perishes i.e. we will not resort to arbitration.
5. No extra items are left to be settled.
6. We do not have any claims against any item related to the Lol than those items certified in the bills.
7. We are accepting the recoveries or hold amount from our bills, if any, made by GIPCL against non-compliance or as decided by GIPCL within terms & conditions of contract.
8. We have paid royalties, taxes for all the materials procured by us, for carrying out the works for above Lol and we indemnify GIPCL from any liability arising thereof.
9. In case of any disputes arising in future related to payment of royalties, all liabilities of settlement of dispute and its payment if any, will be borne by us.
10. We have paid wages to all the workmen who were deployed by us for carrying out above referred work as per prevailing Minimum wages act. We have also fulfilled all requirements of the P.F. Act. We have maintained all records necessary as per the statutory requirements. We hereby indemnify GIPCL from any disputes arising in future related to payment of labours, Provident Fund, etc. and confirm that all liabilities of settlements of disputes and their payment is our responsibility.

The above confirmation will come into effect as soon as payment from final bill after due recoveries will be received by us.

For, M/s. _____
Signature, Stamp and date

ANNEXURE-D

Declaration cum Undertaking for Safety Laws and Regulations Compliance

(To be submitted on Company's Letter Head)

I _____ on behalf of _____ (Name of Bidder / Company) hereby confirm, agree and undertake that all the Statutory and Safety Laws and Regulations of the applicable Authority/ies shall be strictly followed for all types of works at the site during the period of the Contract, if awarded to me.

Signed and stamped by the authorized signatory of the Bidder

Declaration for Contractual Litigations

(To be submitted on Company's Letter Head)

Please Tick (✓) whichever is correct option

I _____ on behalf of _____ (Name of Bidder / Company) hereby confirm that I /We have

- a. Not invoked legal recourse e.g. litigation against any Govt, of Gujarat Undertakings / Depts. / Authorities and Govt. of Gujarat supported companies / undertakings / organizations for the last three (03) years. There are no ongoing/pending legal matter(s) with any of the Govt. of Gujarat Undertakings / GoG supported Companies, including GIPCL.

Please Tick ()

OR

- b. Invoked legal recourse e.g. litigation against any Govt, of Gujarat Undertakings / Depts. / Authorities and Govt. of Gujarat supported companies / undertakings / organizations for the last three (03) years.

Please Tick ()

If "b" is applicable, please submit the details for the same.

The above is true, as on date, to the best of my knowledge. Any breach/ false statement in this regard shall amount to disqualification of the Bid being submitted herein.

Signed and stamped by the authorized signatory of the Bidder

ANNEXURE-E

SCHEDULE OF DEVIATION FROM GENERAL AND TECHNICAL SPECIFICATIONS

All the deviations from the general and technical specifications shall be filled by BIDDER clause by clause in this schedule.

Sr. No.	SECTION	CLAUSE No.	AS PER TENDER DOCUMENT	DEVIATION

Company's Seal

Signature _____

Name _____

Designation _____

Company _____

Date _____

The bidder hereby certifies that the above mentioned are the only deviations from OWNER's Tender enquiry. The bidder further confirms that in the event any other data and information presented in the BIDDER's proposal and accompanying documents are at variance with specific requirements laid out in the OWNER's Tender Document, then the latter shall govern and will be binding on the BIDDER for quoted price.

ANNEXURE-F

PARTICULARS OF THE BIDDER

Sr. No.	Particulars	Please provide information here.
1.	Name of Bidder	
2.	a. Registered Office Address: b. Address for Correspondence: c. E-mail ID:	
3.	Contact Details: Contact Person Name Telephone No.: Mobile No.:	
4.	Year of establishment PAN No. GST No	

Company's Seal

Signature _____

Name _____

Designation _____

Company _____

Date _____

ANNEXURE-G

[On Rs.300/- Non-Judicial Stamp paper with notary]

INDEMNITY BOND

We, M/s..... having registered office at..... thereby solemnly state, declare and represent: THAT we have been entrusted a jobfor year..... i.e. fromtovide Work order No:.....Dated..... on contract basis by M/s Gujarat Industries Power Company Limited for it's Surat Lignite Power Plant at Village Nani-Naroli, Taluka Mangrol, Dist. Surat and we have undertaken the said work and have completed the same at GIPCL site duringto period.

THAT we are fully aware about the applicability of various Labour Legislation and Rules framed thereunder, to be Contractor & Contract Labours Legislations and Rules framed thereunder, to the Contractor & Contract Labours, which includes (1) The Contract Labour (Regulation & Abolition) Act, 1970. (2) The Employee's Provident Fund & Miscellaneous Provisions Act, 1952. (3) The Minimum Wages Act, 1948. (4) The Payment of Wages Act, 1936. (5) The Employee's Compensation Act, 1923. (6) The Payment of Bonus Act, 1965. (7) The payment of Gratuity Act, 1972. (8) The Equal Remuneration Act, 1976 etc. to our establishment and Gujarat Industries Power Company Limited.

THAT we have completed the execution of the said contractual job and now our final bill worth **Rs.....** /- is pending for payment. We state and declare that we have complied with all related provisions of the laws as applicable to our establishment and/or GIPCL during contractual period. In case any liabilities or responsibilities whatsoever arise in respect of the permanent and/or temporary we shall bear full responsibilities thereof (including that of sub-contractors) and shall meet with the requirement at any point of time, if the disputes is raised either by workman or their union or by way of inspection remarks passed by Govt. Agencies. THAT in consideration of the aforesaid liabilities due to us and/ or breach of any statutory provisions under any law, if any we hereby agree to indemnify, save keep harmless the company against all recoveries, claims, damages, costs and expenses which may be made against or suffered or incurred by Gujarat Industries Power Company Limited, Baroda/ Nani-Naroli by any reason or consequence of such payment/s and or Liability/ies.

Name, Signature & Seal of Proprietor/Owner

Place:

Date:

ETHICS PACT

GUJARAT INDUSTRIES POWER COMPANY LIMITED

Reference PO Number

Date:

Integrity Pact No.:

Contract Period:

To create an environment where Business Confidence is built through best business practices and is fostered in an atmosphere of trust and respect between providers of goods and services and their users for the benefit of stakeholder, society and the nation.

GIPCL'S COMMITMENT	PARTY'S COMMITMENT
To maintain the highest ethical standards in business and professions	Not to bring pressure / recommendation from outside GIPCL to influence its decision.
To ensure maximum transparency to the satisfaction of all stakeholders.	Not to use intimidation, threat, inducement or pressure of any kind on GIPCL or any of its employees.
To fulfill the terms of agreement / contract and to consider objectively the viewpoints of other stakeholders.	To be prompt and reasonable in fulfilling the contract, agreement and legal obligations.
To ensure regular and timely release of payments.	To provide goods and / or services timely as per agreed.
To ensure that no improper demand is made by employees or by anyone on our behalf.	To maintain the general discipline in our dealings and transactions.
To give maximum possible assistance to all the Vendors / Suppliers / Service Provider and others to enable them to complete the works in time.	To be truthful and honest in furnishing information.
To provide all necessary information to suppliers /contractors relating to contract / job to facilitate them to complete the contract / job successfully in time.	Not to divulge to others any information, business details about GIPCL made available during the course of business relationship without the written consent of GIPCL.
To ensure that no hurdles are caused to vendors / suppliers / contractors in execution of agreement / contract / work.	Not to enter into cartel / understanding whether formal or informal so as to influence the price.

Seal & signature

Seal & Signature

(GIPCL's Authorized Signatory)

(Bidder's Authorized Signatory)

Name:

Name:

Designation:

Designation