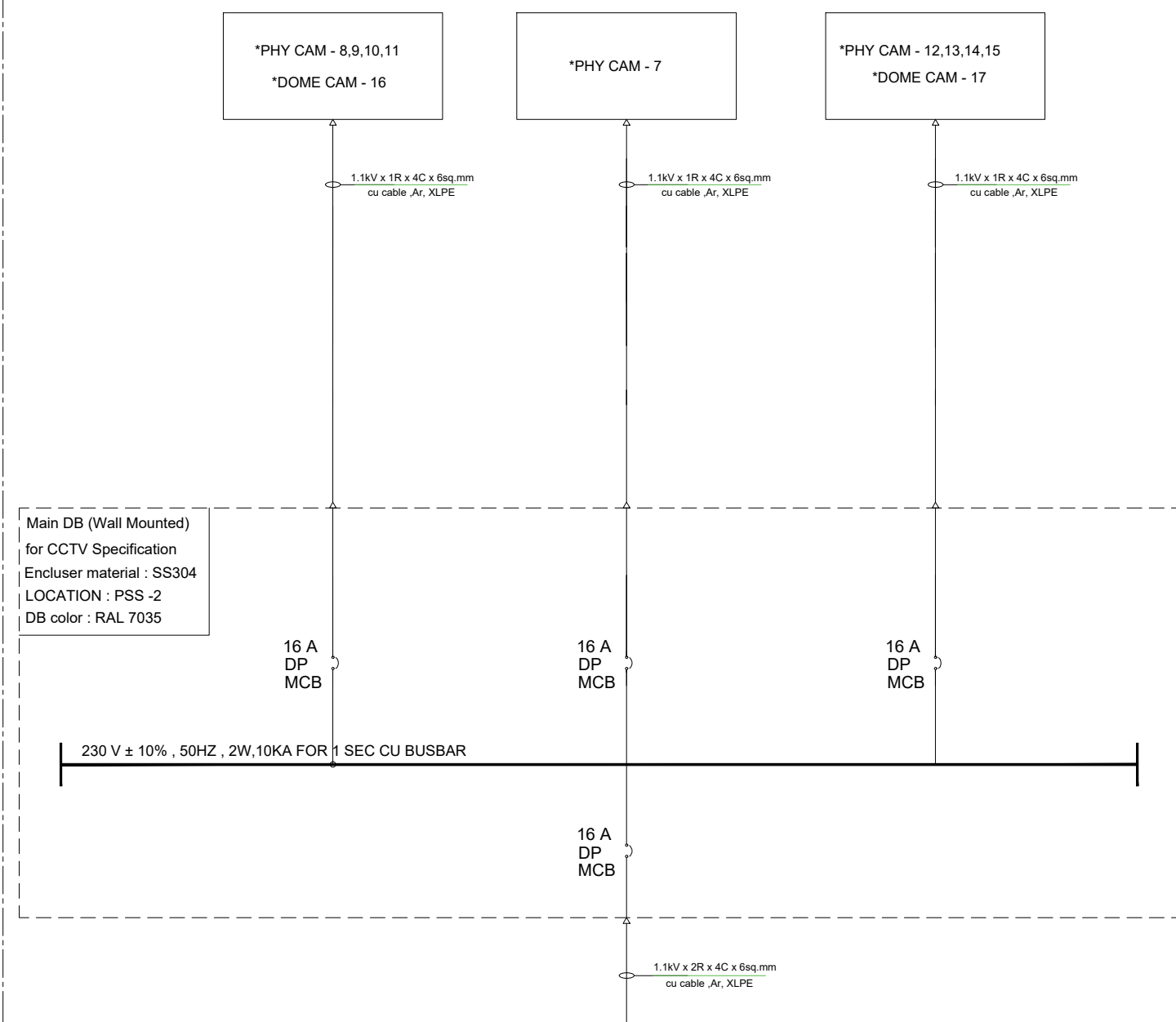
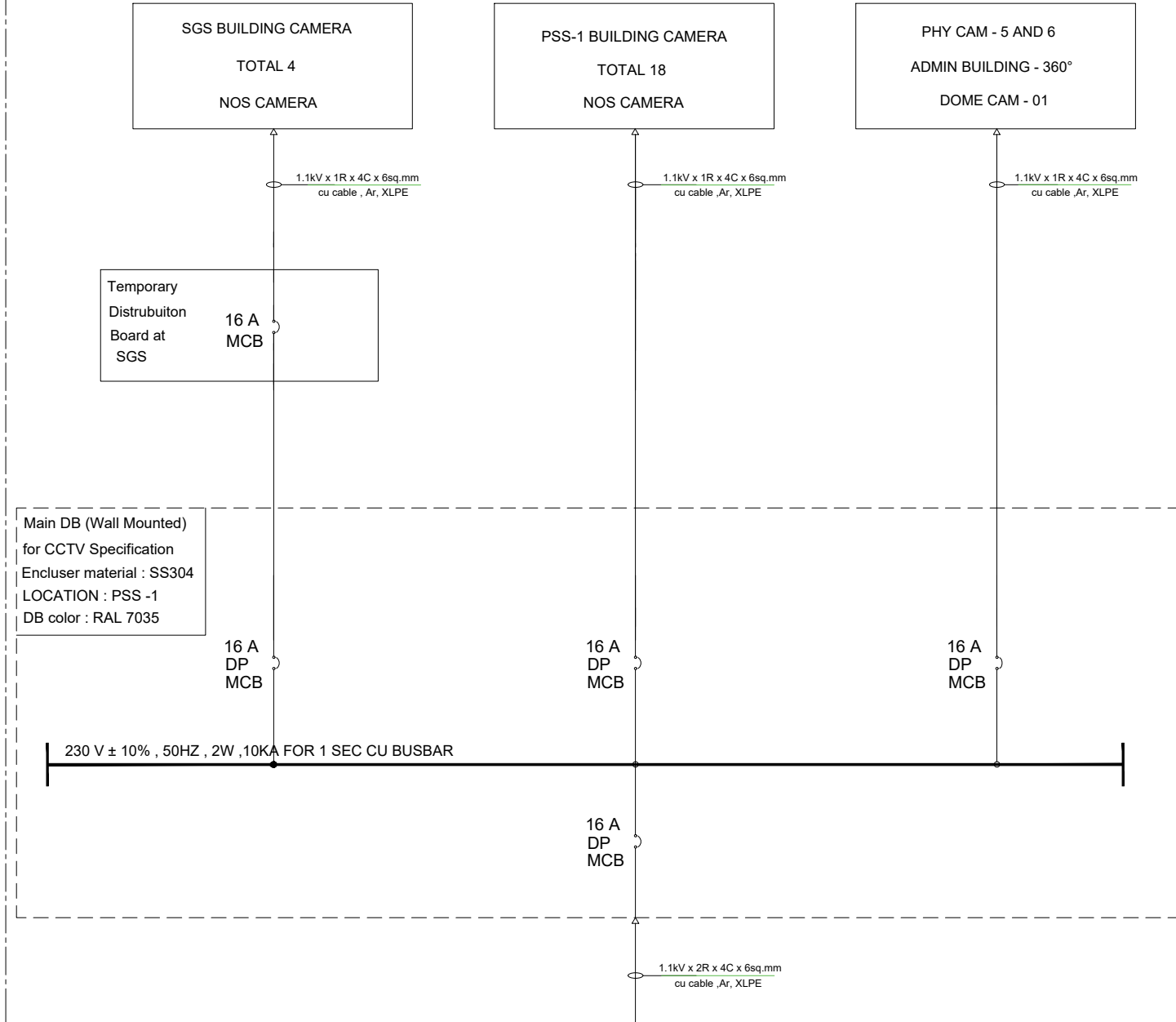


SCOPE-CONTRACTOR

SCOPE-CONTRACTOR

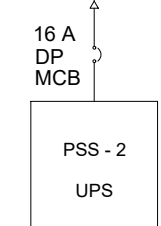
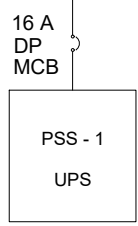


SCOPE - GIPCL

SCOPE - GIPCL

LOCATION-PSS-1

LOCATION-PSS-2



NOTES:-

- CABLE SIZE ONE TENTATIVE IT SHALL BE DECIDED DURING DETAIL ENGINEERING
- TEMPORARY DISTRIBUTION BOARD AT SGS, SHOULD BE OUTDOOR TYPE, IP RATING SHALL BE AS PER SITE CONDITON
- \* INDICATES THOSE CCTV SHALL HAVE PROVISION TO OPERATE ON DUAL POWER SUPPLY (SELF SOLAR POWER AND UPS POWER SUPPLY)

LEGEND:-

- MINIATURE CIRCUIT BREAKER

FOR TENDER PURPOSE ONLY

5	22-04-2026	ISSUED FOR APPROVAL	VU		SK
4	09-04-2026	ISSUED FOR APPROVAL	VU		SK
3	27.01.2026	ISSUED FOR APPROVAL	VU		SK
2	05.11.2025	ISSUED FOR APPROVAL	VU		SK
1	17.10.2025	ISSUED FOR APPROVAL	VU		SK
0	26.09.2025	ISSUED FOR APPROVAL	VU		SK
REV.	DATE	DESCRIPTION	DRN.	STR.	MECH. ELEC. INST.
			APPROVED BY		
<b>FICHTNER</b> INDIA Consulting Engineers (India) Private Limited Chennai, Bangalore			GUJARAT INDUSTRIES POWER CO. LTD 2375 MW CAPACITY SOLAR/WIND/HYBRID RENEWABLE ENERGY PARK AT GREAT RANN OF KUTCH AREA, GUJARAT		
DRAWN	VU	22-04-2026	TITLE		
DESIGNED	NKJ	22-04-2026	CCTV POWER FLOW SCHEME		
CHECKED	SKP	22-04-2026			
DEPT. HEAD	SK	22-04-2026			
PROJ. MGR.	RP	22-04-2026			
RELEASED FOR	PRELIMINARY		DEPT.	RENEWABLE	JOB NO.
TENDER	✓				1721125
ENGINEERING			SCALE:	NTS	REV.
CONSTRUCTION			DWG. NO.	FCE-1721125-EL-DWG-SLD-4100-001	5
SHEET No. 01 OF 01					