

Gujarat Industries Power Company Ltd

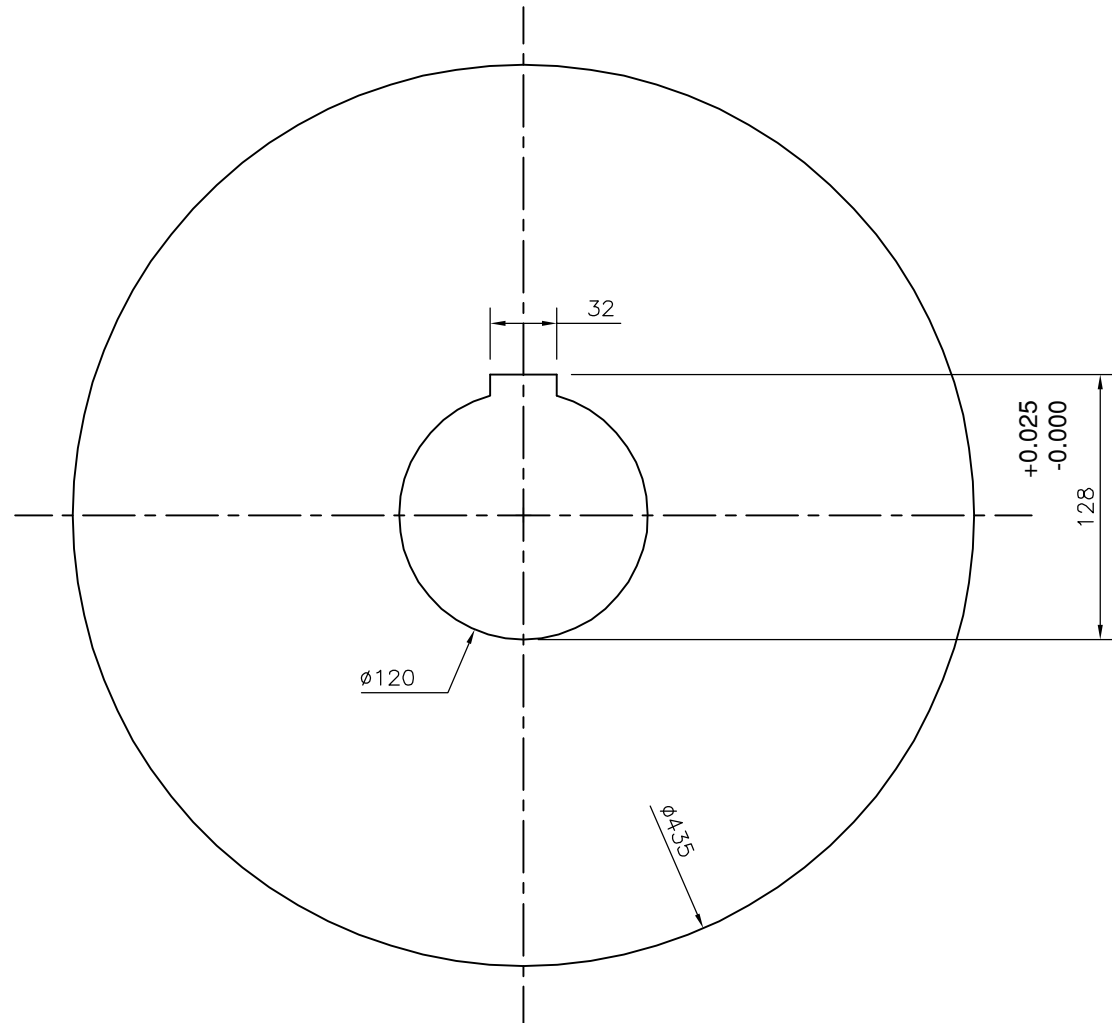
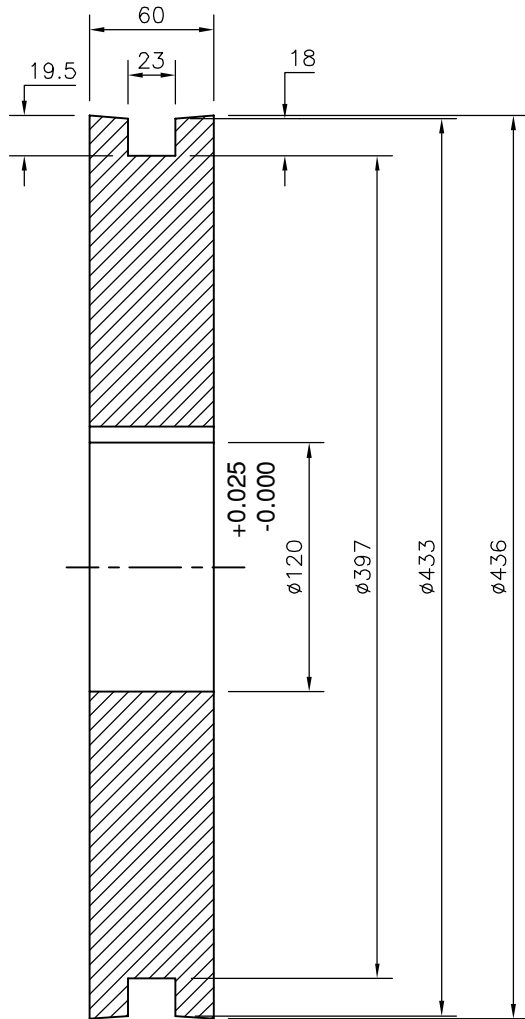
TECHNICAL SPECIFICATIONS PART-4

Item Code: 711002046- RETURN IDLER WHEEL FOR LIGNITE CONVEYER.

Ref. Drawing No: A1/B/003

Terms and Conditions

1. MOC of material is as per in attached drawing.
2. Party shall submit the complete chemical analysis as per material specification in NABL approved laboratory and all test certificate shall be submitted along with supply.
3. GIPCL reserve the right to get the material tested through NABL accredited laboratory at random and result of the same shall be remain binding to both.
4. GIPCL reserve the right to inspect the material BY PMI (Positive metal identification) Method at random and result of the same shall be remain binding to both.
5. **Guarantee period:** Guarantee period shall be 12 month from the date of installation or 18 months from the date of receipt of material at site.
6. Drawings of above items are attached herewith.
7. Party Shall Get Sample approved prior affecting the Bulk Supply.
8. Interchangeability with the existing spares is insisted by M/S GIPCL.
9. Pre dispatch inspection is insisted by company.



CODE NO. : 711002046

MATERIAL : **EN 353(HARDENED)**

H&T : Flame Hardning 50 to 55 RC
up to 0.5mm thk.

	SIGN.	DATE	MODIFIED RETURN IDLER FOR LIGNITE	GIPCL-SLPP
DGN.				
DRN.	HCC	23.07.2013		
CHD.				
TRD.				
APP.			SCALE : N.T.S.	QTY. : 1
ALL DIMENSIONS ARE IN M.M.			MATERIAL : EN 353	DRG. NO./ PART NO. AI/B/003

Gujarat Industries Power Company Ltd.

TECHNICAL SPECIFICATIONS

ITEM CODE:- 711002057 – GUIDE RAIL 20MM THICK FOR LIGNITE CONVEYOR.

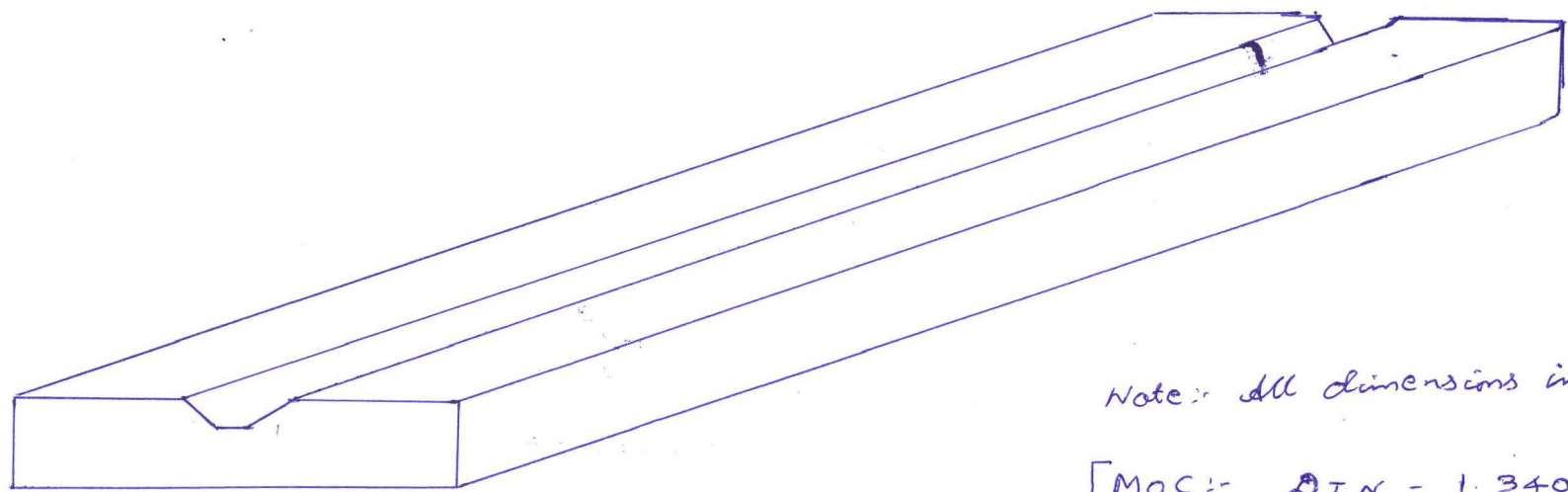
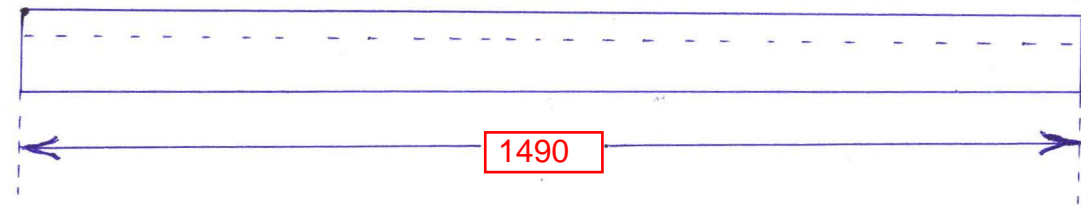
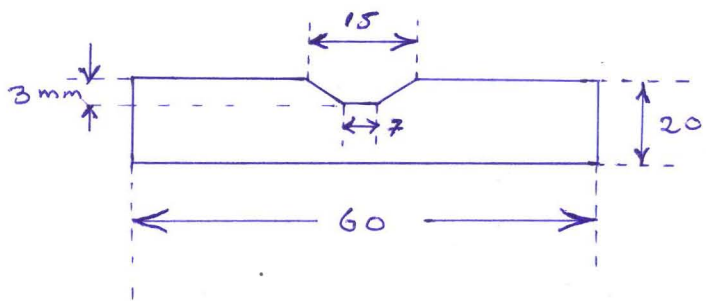
REF. DRAWING NO:- As per attached.

Terms and Conditions.

1. MOC of material is as : DIN -1.3401.
2. Party shall submit the complete chemical analysis as per material specification in NABL approved laboratory and all test certificate shall be submitted along with supply.
3. GIPCL reserve the right to get the material tested through NABL accredited laboratory at random and result of the same shall be remain binding to both.
4. GIPCL reserve the right to inspect the material BY PMI (Positive metal identification) Method at random and result of the same shall be remain binding to both.
5. **Guarantee period:** Guarantee period shall be 12 month from the date of installation or 18 months from the date of receipt of material at site.
6. Drawing is attached herewith.
7. Party Shall Get Sample approved prior affecting the Bulk Supply.

SAP CODE :- 711002057

GUIDE RAIL 20mm Thickness for lignite conveyor.



Note: All dimensions in mm.

[MOCK ID - 13401]

Gujarat Industries Power Company Ltd.

TECHNICAL SPECIFICATIONS

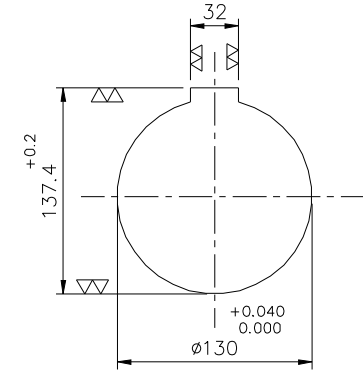
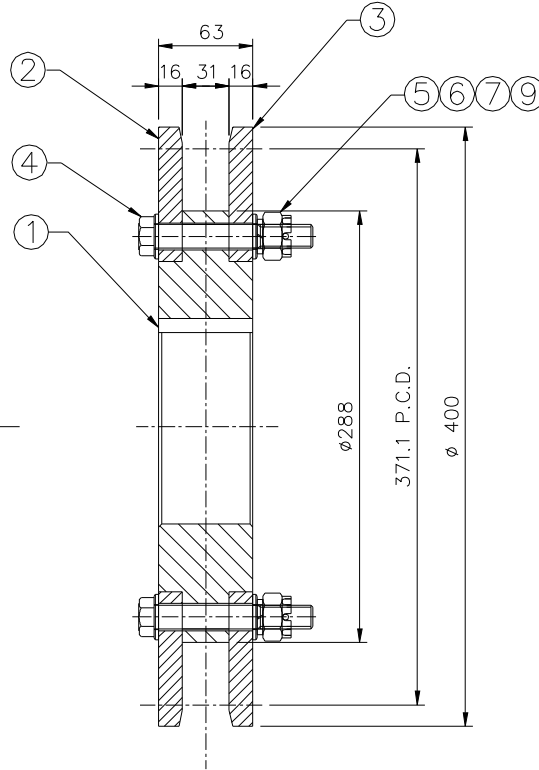
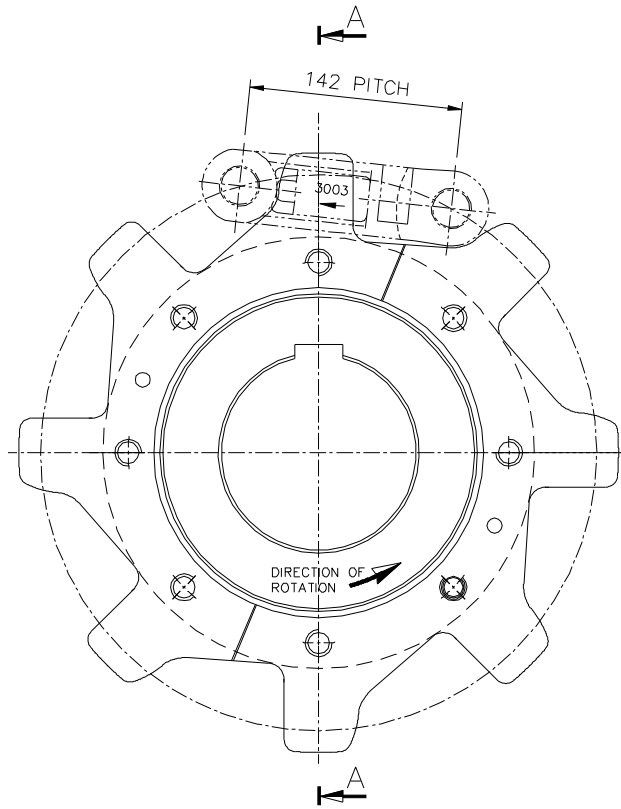
ITEM CODE:- 711002094- RIM SET OF LIGNITE CONVEYOR DRIVE SPROCKET

REF. DRAWING NO:- MH1488-110

Technical & Commercial Terms.

1. MOC of material is as : EN 353 (HARDENED)
2. Party shall submit the complete chemical analysis as per material specification in NABL approved laboratory and all test certificate shall be submitted along with supply.
3. GIPCL reserve the right to get the material tested through NABL accredited laboratory at random and result of the same shall be remain binding to both.
4. GIPCL reserve the right to inspect the material BY PMI (Positive metal identification) Method at random and result of the same shall remain binding to both.
5. Guarantee period: Guarantee period shall be 12 month from the date of installation or 18 months from the date of receipt of material at site.
6. Drawing is attached herewith.
7. Party Shall Get Sample approved prior affecting the Bulk Supply.
8. Interchangeability with the existing spares is insisted by M/S GIPCL.
9. Pre dispatch inspection is insisted by company.

ITEM CODE:-711002094



KEYWAY & BORE DETAILS

NOTES: -

- 1) ALL DIMENSIONS ARE IN mm
- 2) PART NO 2 & 3 ARE TO BE FLAME HARDENED TO 50 TO 55 HRC CASE DEPTH TO BE BETWEEN 0.8 mm TO 1.2 mm.
- 3) BOM IS GIVEN FOR 1 NO. ASSLY. QTY. REQD. 8 Nos.

9	SPLIT PIN	08	STD		
8	DOWEL PIN	02	STD		
7	SPRING WASHER M16	08	STD		
6	PLANE WASHER M16	16	STD		
5	CASTLE NUT M16	08	STD		
4	BOLT M16	08	IS:1367		
3	RIM 16 THK	01			
2	RIM 16 THK	01			
1	HUB PLATE	01	IS:2062		
SR.NO.	DESCRIPTION	QTY.	MATERIAL	WT. Kg.	REMARK

EN353 HARDENED

QTY.	MATL.	HARDNESS	NET WT.	RAW WT.	PATTERN No.	ASSY. DRG. NO.
------	-------	----------	---------	---------	-------------	----------------

GIPCL -SLPP

client							
project							
title SPROCKET(8 TEETH 142 PITCH FOR 3003 CHAIN)							
DRN.	CHD.	APPD.	DATE.	SCALE	JOB NO.	MH-1488	REV.
SMB	SMB		22.5.14	-	DRG. NO.	MH1488-110	0

REV. No.	REVISION	ZONE	DATE	CHD.
----------	----------	------	------	------

S
I
G
N
E
D
A
N
D
C
H
E
K
E
D
B
Y
D
R
A
W
I
N
G
S
C
H
E
M
A
T
I
C
S
O
F
T
W
A
R
E
P
R
O
D
U
C
E
D
B
Y
M
H
D
D
E
S
I
G
N
S
O
L
U
T
I
O
N
S
P
R
I
V
A
T
E
L
Y

THIS DRAWING IS PROPERTY OF DECCAN MECH. AND CHEM. IND. LTD. PUNE AND SHOULD NOT BE USED DIRECTLY OR INDIRECTLY OR PARTS THERE OF WITHOUT EXPRESS PERMISSION FROM DECCAN MECH. AND CHEM. IND. LTD.

Gujarat Industries Power Company Ltd.

TECHNICAL SPECIFICATIONS

Terms and Conditions

1. MOC of material is as follows:

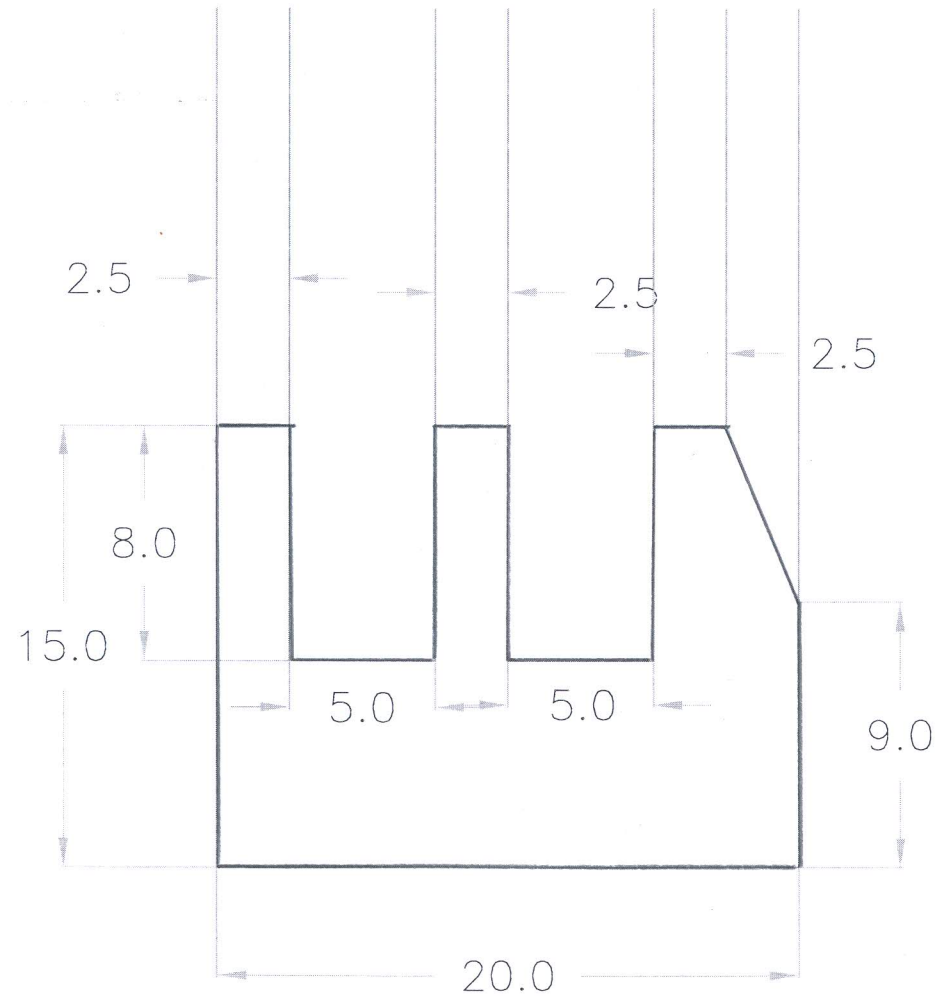
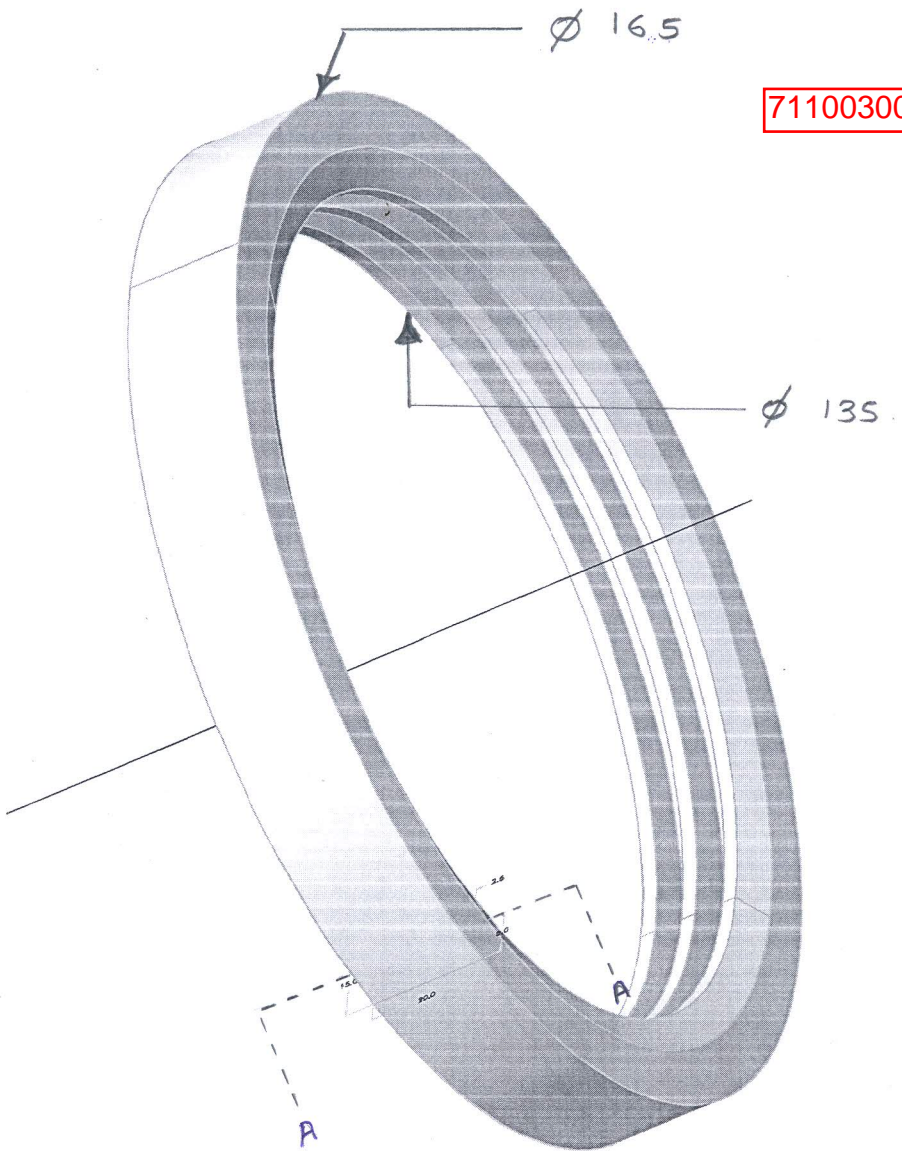
ITEM CODE	MATERIAL DESCRIPTION	MOC
711003007	LABYRINTH RING SCRAPER LRALF PART NO. 21	EN36
711003008	LABYRINTH RING ROTOR LRALF PART NO. 22	EN36
711003014	SHAFT SLEEVES SCRAPER LRALF PART NO. 52	EN36 HARDENED
711003015	SHAFT SLEEVES ROTOR LRALF PART NO. 44	EN36 HARDENED
711003040	AIR RING FOR SCRAPER	EN36
711002041	AIR RING FOR ROTOR	EN36

2. Party shall submit the complete chemical analysis as per material specification in NABL approved laboratory and all test certificate shall be submitted along with supply.
3. GIPCL reserve the right to get the material tested through NABL accredited laboratory at random and result of the same shall be remain binding to both.
4. GIPCL reserve the right to inspect the material BY PMI (Positive metal identification) Method at random and result of the same shall be remain binding to both.
5. Drawings of above items are attached herewith.
6. Party Shall Get Sample approved prior affecting the Bulk Supply.
7. Interchangeability with the existing spares is insisted by M/S GIPCL.

SAP CODE :- 711003007, LABYRINTH RING SCRAPER LRALE PART NO: 2

ALL DIMENSIONS IN MM, MOC:- EN 36.

711003007

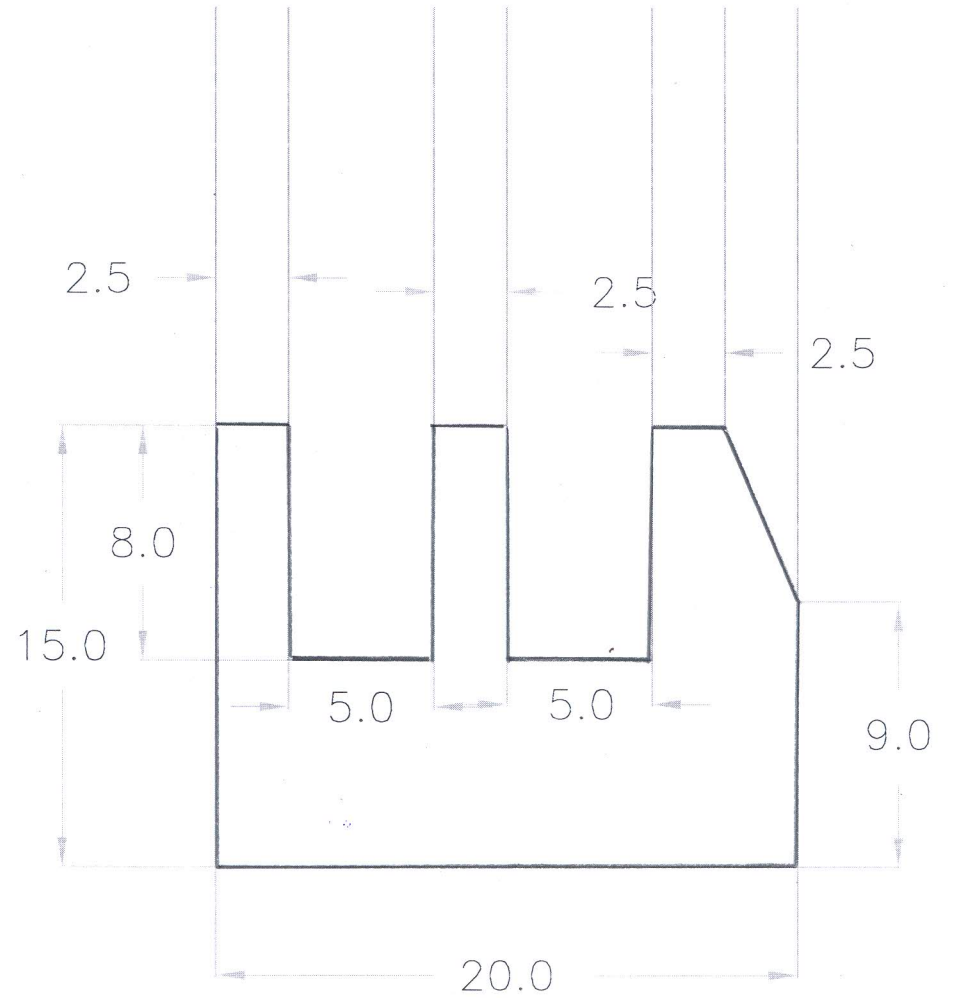
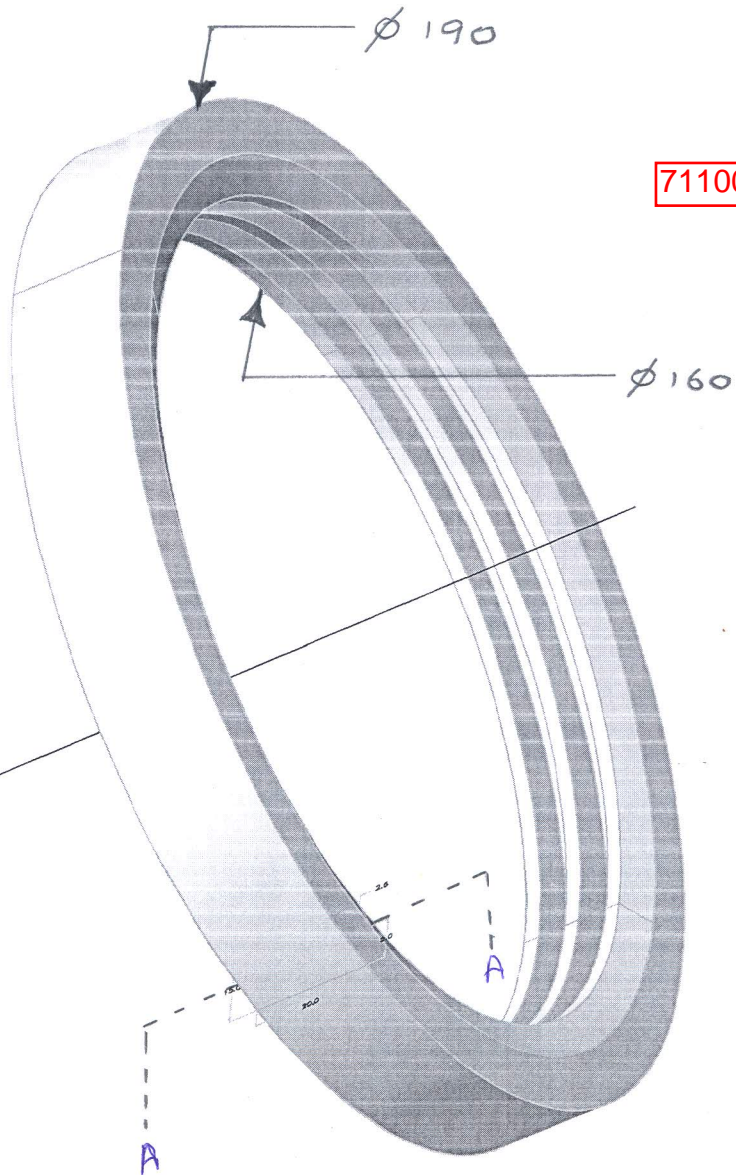


A-A- CROSS SECTION

SAP CODE:- 711003008, LABYRINTH RING ROTOR LRALF PART NO.22

ALL DIMENSIONS IN MM, MOC:- EN 36

711003008



A-A- CROSS SECTION.

Shaft Protection Sleeve - Scraper

Dia 13mm x 2 Holes

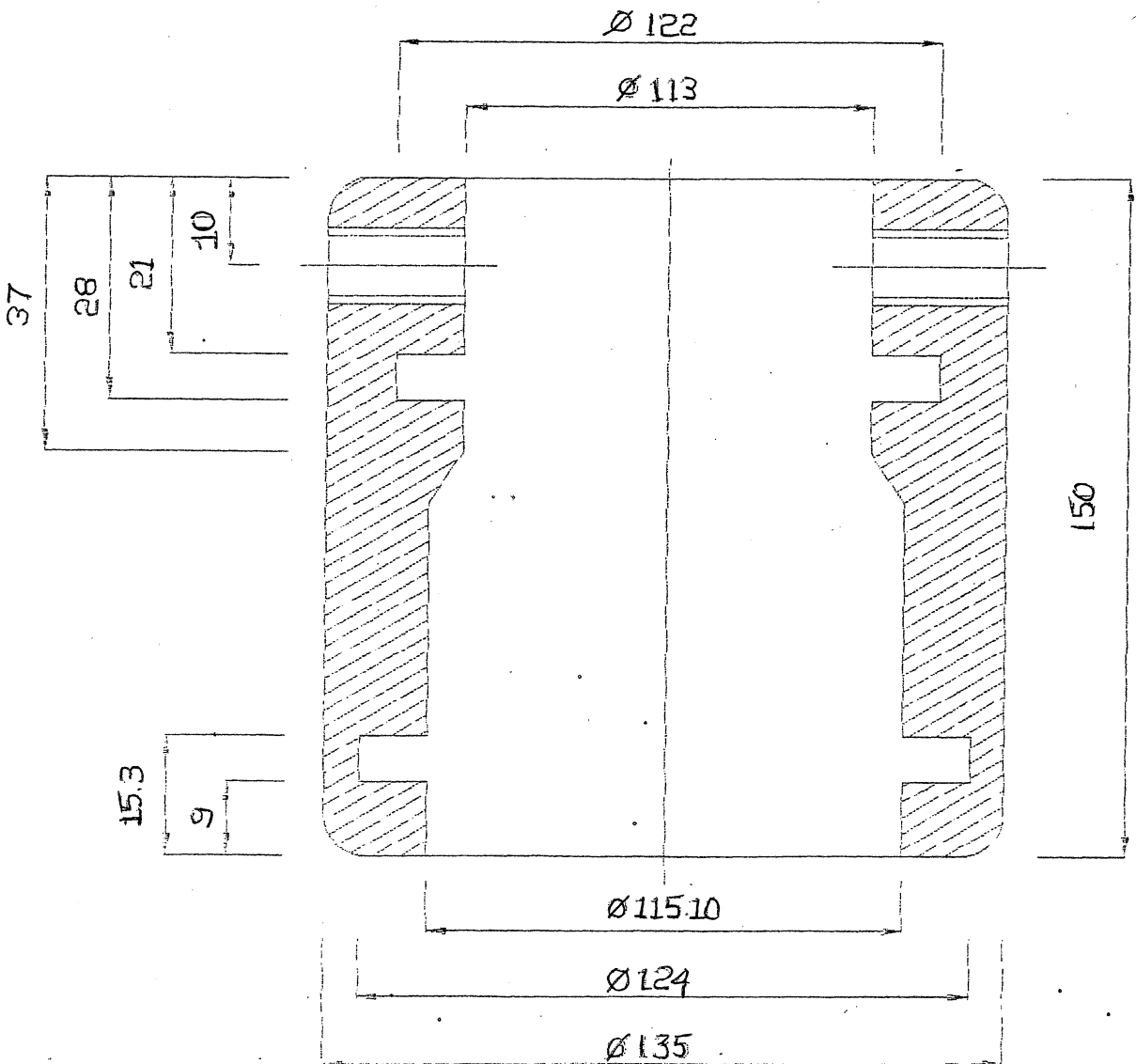
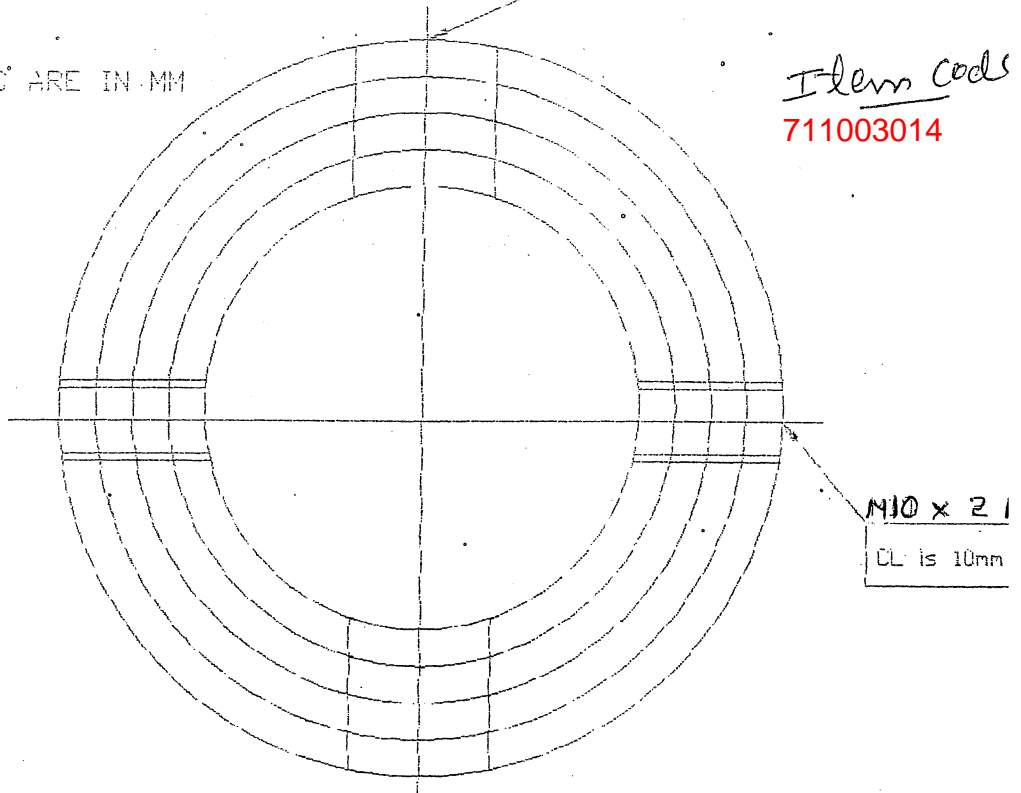
Material : EN 36(HARDENED)

CL is 10mm from top

NOTE :-

- 01. ALL DIMENSIONS ARE IN MM
- 02. NOT TO SCALE

Item Code
711003014



Shaft Protection Sleeve - Rotor

Material : **EN 36(HARDENED)**

Dia 13mm x 2 Holes

CL is 10 mm from top

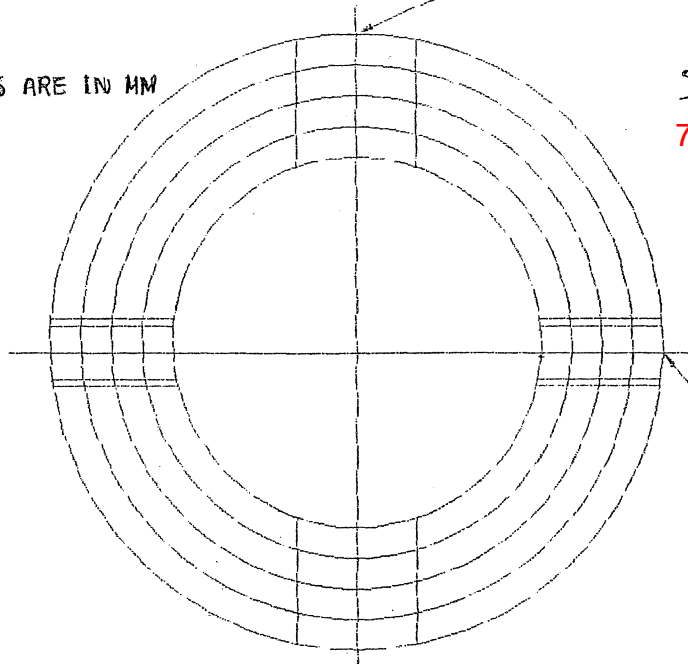
NOTE 1-

01. ALL DIMENSIONS ARE IN MM

02. NOT TO SCALE

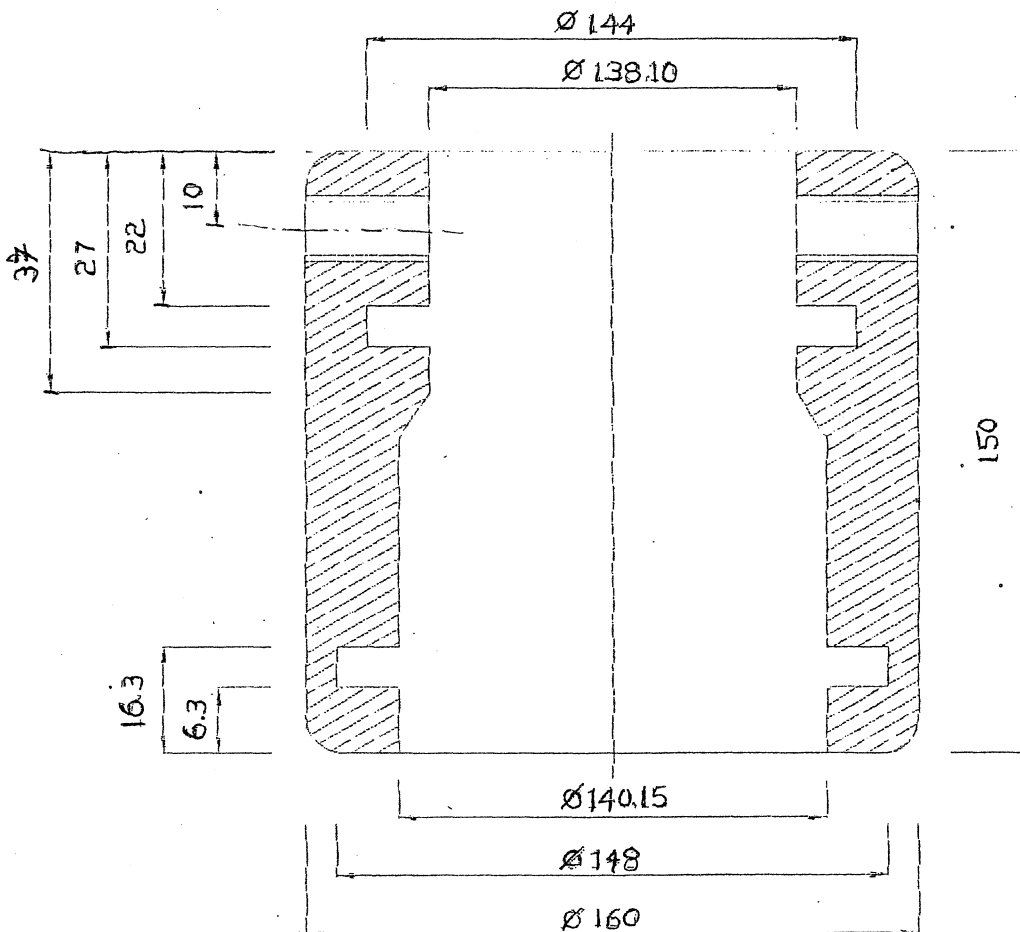
Item code:

711003015



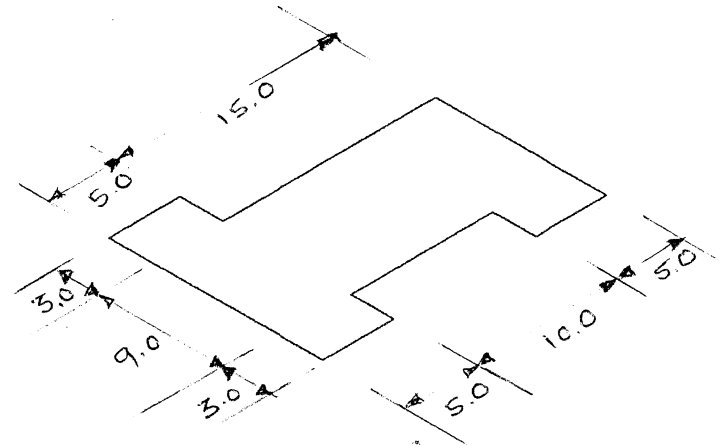
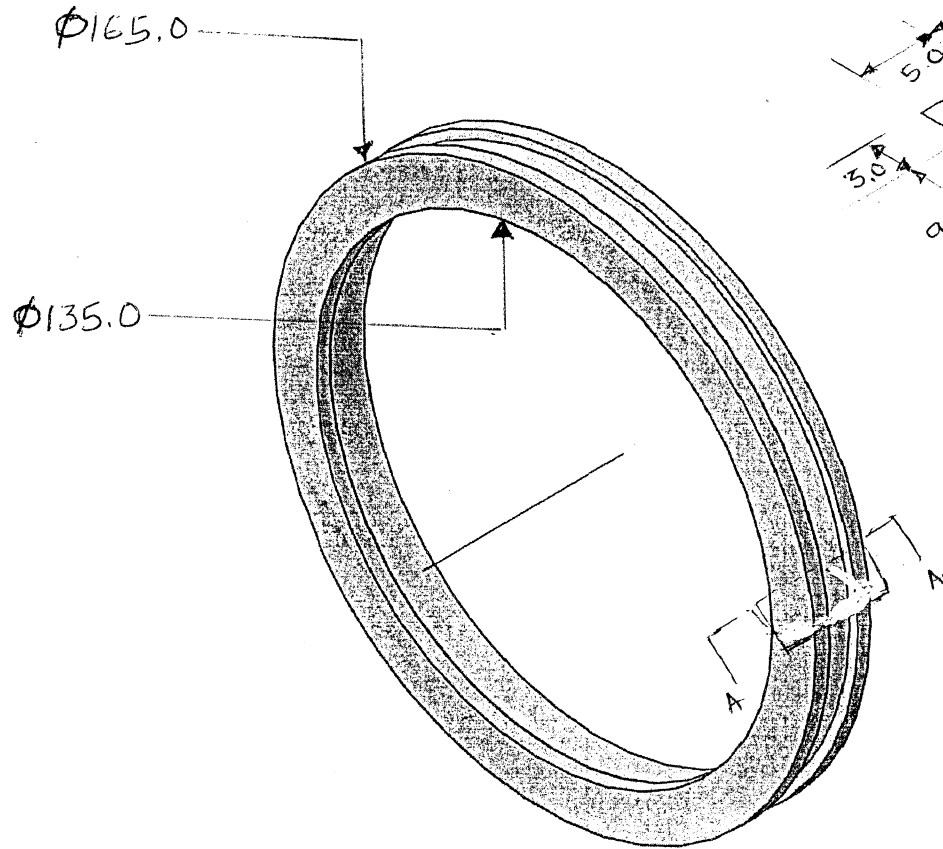
M10 x 2 Holes (NPT)

CL is 10 mm from top



ITEM CODE:- 711003040, AIR RING FOR SCRAPER.

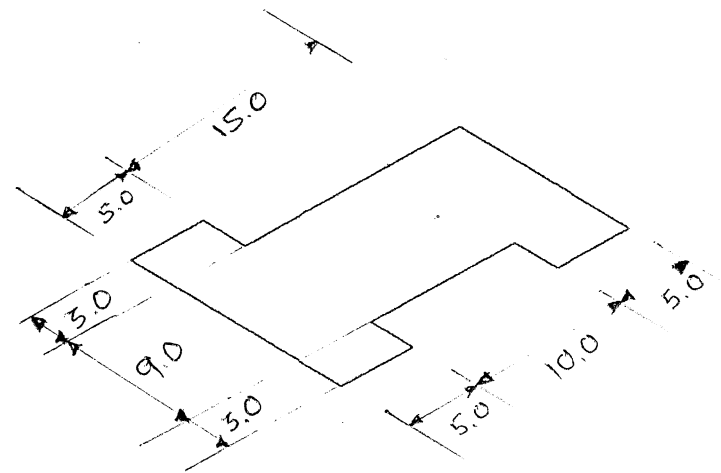
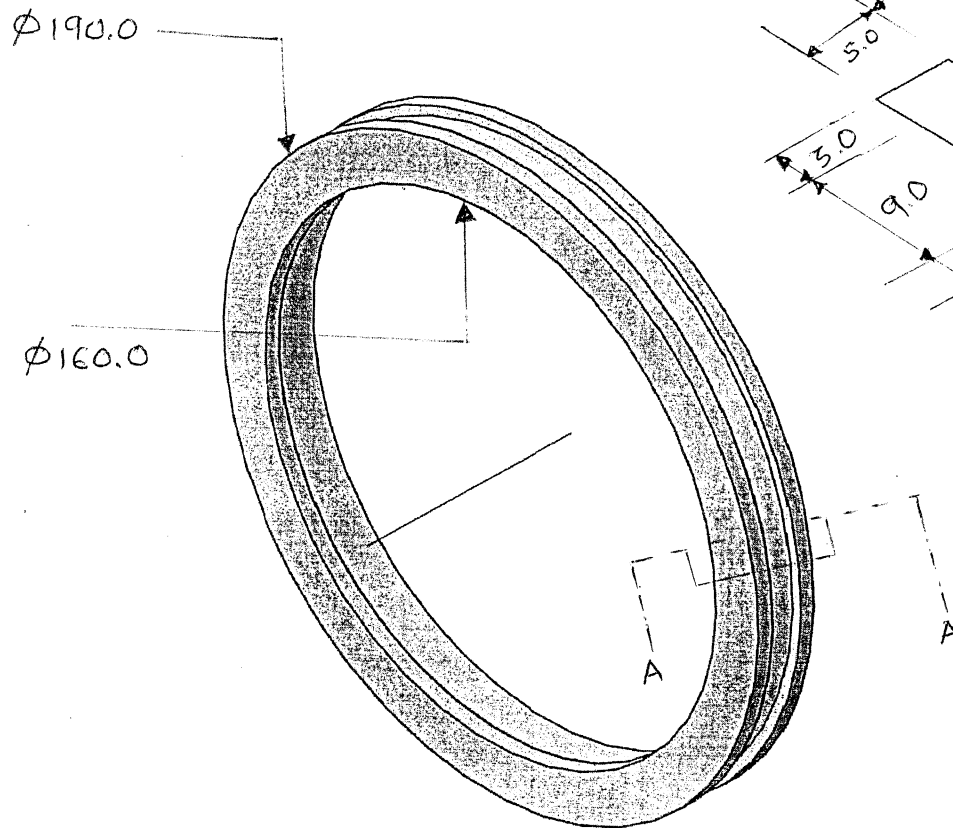
ALL DIMENSIONS ARE IN MM, MOC:- EN36.



[A-A CROSS SECTION.]

ITEM CODE : 711003041, AIR RING FOR ROTOR.

ALL DIMENSIONS ARE IN MM, MOC :- EN 36.



[A-A CROSS SECTION.]